

7/29/2020 1:45 PM  
PACKET: 05500 8/3/20 MEETING  
VENDOR SET: 01  
FUND : 101 GENERAL  
DEPARTMENT: 1110 CITY COUNCIL  
BUDGET TO USE: CB-CURRENT BUDGET

REGULAR DEPARTMENT PAYMENT REGISTER

BANK: APBNK

VENDOR	NAME	ITEM #	G/L ACCOUNT NAME	DESCRIPTION	CHECK#	AMOUNT
01-05984	CORN PALACE CONCESSIONS					
		I-71420	101-41110-42600	SUPPLIES & MA DISANI WATER	183893	12.00
				DEPARTMENT 1110 CITY COUNCIL	TOTAL:	12.00

7/29/2020 1:45 PM  
PACKET: 05500 8/3/20 MEETING  
VENDOR SET: 01  
FUND : 101 GENERAL  
DEPARTMENT: 1410 ATTORNEY'S OFFICE  
BUDGET TO USE: CB-CURRENT BUDGET

REGULAR DEPARTMENT PAYMENT REGISTER

BANK: APBNK

VENDOR	NAME	ITEM #	G/L ACCOUNT NAME	DESCRIPTION	CHECK#	AMOUNT
01-06739	THOMSON REUTERS - WEST	I-842653393	101-41410-42610	WEST GROUP LA SD CODIFIED LAWS	183999	219.26
DEPARTMENT 1410 ATTORNEY'S OFFICE					TOTAL:	219.26

PACKET: 05500 8/3/20 MEETING

VENDOR SET: 01

FUND : 101 GENERAL

DEPARTMENT: 1440 HUMAN RESOURCES

BANK: APBNK

BUDGET TO USE: CB-CURRENT BUDGET

VENDOR	NAME	ITEM #	G/L ACCOUNT NAME	DESCRIPTION	CHECK#	AMOUNT
01-04779	AVERA OCCUPATIONAL MEDI	I-68756-00	101-41440-42231	EMPLOYEE PHYS SERVICE	183868	882.45
DEPARTMENT 1440 HUMAN RESOURCES					TOTAL:	882.45

PACKET: 05500 8/3/20 MEETING

VENDOR SET: 01

FUND : 101 GENERAL

DEPARTMENT: 1460 INSURANCE & BONDS

BANK: APBNK

BUDGET TO USE: CB-CURRENT BUDGET

VENDOR	NAME	ITEM #	G/L ACCOUNT NAME	DESCRIPTION	CHECK#	AMOUNT
01-02624	SD PUBLIC ASSURANCE ALL	I-27194	101-41460-42110	LIABILITY, PR PROPERTY COVERAGE	183986	91.85
DEPARTMENT 1460 INSURANCE & BONDS					TOTAL:	91.85

7/29/2020 1:45 PM  
PACKET: 05500 8/3/20 MEETING  
VENDOR SET: 01  
FUND : 101 GENERAL  
DEPARTMENT: 1920 MUNICIPAL BUILDINGS  
BUDGET TO USE: CB-CURRENT BUDGET

REGULAR DEPARTMENT PAYMENT REGISTER

BANK: APBNK

VENDOR	NAME	ITEM #	G/L ACCOUNT NAME	DESCRIPTION	CHECK#	AMOUNT
01-00462	COCA COLA BOTTLING CO	I-2540351	101-41920-42620	SUPPLIES-CITY KANDIHOYI WATER	183887	16.80
01-01699	FM ACOUSTICAL TILE	I-20-0812	101-41920-42620	SUPPLIES-CITY TILES	183910	908.16
01-02537	SHERWIN-WILLIAMS COMPAN	I-6176-1	101-41920-42620	SUPPLIES-CITY PAINT	183988	35.52
01-02679	MENARD'S INC	I-687	101-41920-42520	REPAIR-CITY H WOOD STAIN,TUB & TILE WHITE,	183940	144.14
DEPARTMENT 1920 MUNICIPAL BUILDINGS					TOTAL:	1,104.62

PACKET: 05500 8/3/20 MEETING

VENDOR SET: 01

FUND : 101 GENERAL

DEPARTMENT: 1935 INFORMATION TECHNOLOGY

BANK: APBNK

BUDGET TO USE: CB-CURRENT BUDGET

VENDOR	NAME	ITEM #	G/L ACCOUNT NAME	DESCRIPTION	CHECK#	AMOUNT
01-00356	QUALIFIED PRESORT					
		I-2279-5708	101-41935-42615	POSTAGE MAILING SERVICE	183969	302.57
		I-493919	101-41935-42615	POSTAGE EZ FLATS	183969	24.63
01-01590	MCLEOD'S PRINTING					
		I-41604	101-41935-42640	COPY MACHINE WHITE COPY PAPER	183939	184.95
01-05195	A & B BUSINESS SOLUTION					
		I-737443	101-41935-42250	MANAGED PRINT CONTRACT #CT5029-01	183856	4,130.61
		I-745373	101-41935-42250	MANAGED PRINT CONTRACT #CT5029-01	183856	4,149.46
01-06708	CDW GOVERNMENT INC					
		I-XPL9324	101-41935-42645	COMPUTER HARD LAPTOP	183881	1,134.66
01-09050	MICROSOFT					
		I-E0300BL4LS	101-41935-42920	COMPUTER SOFT JULY SERVICE	183946	2.00
		I-E0300BL6FE	101-41935-42920	COMPUTER SOFT JULY EMAIL	183946	908.00
DEPARTMENT 1935 INFORMATION TECHNOLOGY					TOTAL:	10,836.88

7/29/2020 1:45 PM  
 PACKET: 05500 8/3/20 MEETING  
 VENDOR SET: 01  
 FUND : 101 GENERAL  
 DEPARTMENT: 2110 POLICE DEPARTMENT  
 BUDGET TO USE: CB-CURRENT BUDGET

REGULAR DEPARTMENT PAYMENT REGISTER

BANK: APBNK

VENDOR	NAME	ITEM #	G/L ACCOUNT NAME	DESCRIPTION	CHECK#	AMOUNT
01-00559	DICK'S TOWING LLC	I-T1887	101-42110-42980	VEHICLE TOWIN POLICE TOW	183902	150.00
01-00712	NAPA AUTO PARTS	I-729845	101-42110-42500	REPAIR & MAIN SEAL	183957	9.47
		I-729991	101-42110-42500	REPAIR & MAIN STEERING PUMP	183957	183.74
01-01020	CENTRAL ELECTRIC COOPER	I-14579002-7/20	101-42110-42820	UTILITIES-SHO MONTHLY SERVICE	183882	69.37
01-01050	IVERSON CHRYSLER CENTER	I-71520	101-42110-42902	ALCOHOL TASK RENTAL	183927	49.95
01-01199	STURDEVANT'S AUTO PARTS	I-15-211448	101-42110-42610	GAS OIL TIRES OIL FILTERS	183994	12.62
		I-15-211908	101-42110-42610	GAS OIL TIRES OIL FILTER	183994	6.53
		I-15-212445	101-42110-42500	REPAIR & MAIN BATTERY ASM, VALVE ASY, FILTER	183994	371.78
		I-15-212917	101-42110-42500	REPAIR & MAIN BATTERIES, OIL FILTERS, FORCE BE	183994	191.22
01-01518	VERIZON WIRELESS	I-9858131291	101-42110-42800	TELEPHONE ACCT #786752327-00002	184012	80.02
01-01590	MCLEOD'S PRINTING	I-41384	101-42110-42200	PROFESSIONAL BUSINESS CARDS	183939	90.83
01-02679	MENARD'S INC	I-1242	101-42110-42201	BUILDING MAIN PAINT, STEEL POLE	183940	31.75
		I-923	101-42110-42201	BUILDING MAIN 32W BULBS	183940	54.95
01-02811	JONES SUPPLIES	I-125425	101-42110-42201	BUILDING MAIN FOAM SOAP	183931	51.50
01-02840	TESSIER'S INC	I-TE5047739	101-42110-42500	REPAIR & MAIN PLANNED MAINTENANCE SERVICE	183998	349.20
01-02880	THUNE TRUE VALUE HARDWA	I-A444853	101-42110-42201	BUILDING MAIN DOOR STOPS	184001	38.35
01-06890	TITZE ELECTRIC & REMODE	I-1665a	101-42110-42201	BUILDING MAIN DOOR REPAIRS	184004	416.12
		I-1668a	101-42110-42201	BUILDING MAIN REPAIR WATER DAMAGED AREA	184004	143.01
		I-1669a	101-42110-42201	BUILDING MAIN CHANGED BALLAST, BREAKER,	184004	658.16
01-06950	PETER ARNOLD	I-72420	101-42110-42610	GAS OIL TIRES PIERRE 7/23 MEAL, GAS	183866	11.01
		I-72420	101-42110-42210	CRIMINAL INVE PIERRE 7/23 MEAL, GAS	183866	11.00
01-07002	INTEGRITY TRANSCRIPTION	I-1521	101-42110-42200	PROFESSIONAL TRANSCRIBING SERVICE	183925	75.90

7/29/2020 1:45 PM  
 PACKET: 05500 8/3/20 MEETING  
 VENDOR SET: 01  
 FUND : 101 GENERAL  
 DEPARTMENT: 2110 POLICE DEPARTMENT  
 BUDGET TO USE: CB-CURRENT BUDGET

REGULAR DEPARTMENT PAYMENT REGISTER

BANK: APBNK

VENDOR	NAME	ITEM #	G/L ACCOUNT NAME	DESCRIPTION	CHECK#	AMOUNT
01-07405	PAUL WILSON	I-71720	101-42110-42710	TRAINING SIOUX FALLS 7/13-17 MEALS	184021	55.00
01-07717	VERN EIDE FORD LINCOLN	I-25012525	101-42110-42500	REPAIR & MAIN FUEL FILLER PIPE	184014	203.92
01-08249	CRYSTAL REITZEL	I-111665342193	101-42110-42640	UNIFORM ALLOW PANTS, TOPS, SWEATER REIMBURSEME	183970	60.00
01-08252	CORPORATE TRANSLATION S	I-168658	101-42110-42200	PROFESSIONAL LANGUAGE TRANSLATION	183894	30.21
01-08281	AMERIPRIDE SERVICES INC	I-2801184972	101-42110-42201	BUILDING MAIN MATS, MOPS	183862	57.63
01-08739	KROGMAN CONSTRUCTION LL	I-2020-16 P.E. #1	101-42110-43320	ROOF 2020-16 P.E. #1	183934	6,498.65
01-09509	INNOVATIVE OFFICE SOLUT	I-3036490	101-42110-42600	SUPPLIES PAPER, FOLDERS, STAPLES, PENS,	183924	74.88
01-09592	TIM'S TOWING & RECOVERY	I-72520	101-42110-42980	VEHICLE TOWIN POLICE TOW	184003	125.00
01-09633	STAPLES	I-3449510915	101-42110-42600	SUPPLIES PROF PRT ROLLS	183991	24.68
DEPARTMENT 2110 POLICE DEPARTMENT					TOTAL:	10,186.45



PACKET: 05500 8/3/20 MEETING

VENDOR SET: 01

FUND : 101 GENERAL

DEPARTMENT: 2130 TRAFFIC DEPARTMENT

BANK: APBNK

BUDGET TO USE: CB-CURRENT BUDGET

VENDOR	NAME	ITEM #	G/L ACCOUNT NAME	DESCRIPTION	CHECK#	AMOUNT
01-00424	RUNNINGS SUPPLY INC					
		I-1045808	101-42130-42500	REPAIRS NYLON ROPE	183976	1.90
01-01020	CENTRAL ELECTRIC COOPER					
		I-14579001-7/20	101-42130-42835	UTILITIES-STR MONTHLY SERVICE	183882	402.00
01-01199	STURDEVANT'S AUTO PARTS					
		I-15-212205	101-42130-42500	REPAIRS 1/2 IN F X 3/4 IN	183994	5.86
		I-15-212379	101-42130-42600	SUPPLIES MULTI PURPOSE CLEANER	183994	3.69
		I-15-213112	101-42130-42500	REPAIRS PANEL FUSE HOLDER	183994	2.24
01-01805	FASTENAL COMPANY					
		I-SDMIT150350	101-42130-42600	SUPPLIES D BATTERIES	183907	7.84
		I-SDMIT150717	101-42130-42600	SUPPLIES D BATTERIES	183907	15.68
01-01830	NORTHWESTERN ENERGY & C					
		I-2576730-2-7/20	101-42130-42810	UTILITIES-TRA N SANBORN AND 5TH AVE	183958	108.45
		I-2577687-3-7/20	101-42130-42810	UTILITIES-TRA N SANBORN AND 7TH AVE	183958	74.49
		I-2577895-2-7/20	101-42130-42810	UTILITIES-TRA 710 N MINNESOTA ST	183958	11.41
		I-2578443-0-7/20	101-42130-42840	BUILDING UTIL 705 N CAPITAL ST	183958	200.94
		I-2579139-3-7/20	101-42130-42810	UTILITIES-TRA 901 N MINNESOTA ST	183958	12.51
		I-2579461-1-7/20	101-42130-42810	UTILITIES-TRA N SANBORN AND 12TH AVE	183958	77.03
		I-2580169-7-7/20	101-42130-42810	UTILITIES-TRA 1700 N MAIN ST	183958	23.18
		I-2580311-5-7/20	101-42130-42810	UTILITIES-TRA 1204 N KIMBALL ST	183958	12.20
		I-2580312-3-7/20	101-42130-42810	UTILITIES-TRA N MAIN AND 12TH AVE	183958	86.17
		I-2580491-5-7/20	101-42130-42810	UTILITIES-TRA 1403 N KIMBALL ST	183958	12.20
		I-2581249-6-7/20	101-42130-42520	EMERGENCY SIR E GOLF COURSE SIREN	183958	24.44
		I-2581250-4-7/20	101-42130-42520	EMERGENCY SIR 800 W 8TH AVE	183958	21.93
		I-2581251-2-7/20	101-42130-42520	EMERGENCY SIR 1221 S MINNESOTA ST	183958	23.18
		I-2581252-0-7/20	101-42130-42520	EMERGENCY SIR 100 MATTIE ST	183958	26.17
		I-2581521-8-7/20	101-42130-42810	UTILITIES-TRA W HAVENS AND OHLMAN	183958	69.21
		I-2582741-1-7/20	101-42130-42835	UTILITIES-STR I 90 AND OHLMAN	183958	256.20
		I-2583138-9-7/20	101-42130-42810	UTILITIES-TRA W UNIV AND NORWAY	183958	13.30
		I-2583139-7-7/20	101-42130-42810	UTILITIES-TRA 1309 W UNIVERSITY AVE	183958	12.36
		I-2583145-4-7/20	101-42130-42810	UTILITIES-TRA 1522 W UNIVERSITY AVE	183958	11.89
		I-2583147-0-7/20	101-42130-42810	UTILITIES-TRA 310 W NORWAY	183958	13.14
		I-2583319-5-7/20	101-42130-42810	UTILITIES-TRA HAVENS AND MINN ST	183958	102.62
		I-2583840-0-7/20	101-42130-42810	UTILITIES-TRA S SANBORN AND HAVEN ST	183958	104.71
		I-2719916-5-7/20	101-42130-42520	EMERGENCY SIR CABELA AND SPRUCE	183958	23.18
		I-2734281-5-7/20	101-42130-42520	EMERGENCY SIR 900 BLOCK OF E 11TH ST SIREN	183958	23.50
		I-2735044-6-7/20	101-42130-42835	UTILITIES-STR 801 N KIMBALL ST	183958	10.00
		I-2745956-9-7/20	101-42130-42520	EMERGENCY SIR W END BOAT RAMP	183958	21.93
		I-2943370-3-7/20	101-42130-42810	UTILITIES-TRA SPRUCE AND CABELA DR LT	183958	73.34
		I-3045379-9-7/20	101-42130-42810	UTILITIES-TRA 800 N CAPITAL	183958	11.41
		I-3045401-1-7/20	101-42130-42810	UTILITIES-TRA 921 N CAPITAL	183958	11.41
01-02225	RON'S BICYCLE AND LOCKS					
		I-45800	101-42130-42500	REPAIRS CUT KEY & PROGRAM KEY TO TRUCK	183974	100.00

PACKET: 05500 8/3/20 MEETING

VENDOR SET: 01

FUND : 101 GENERAL

DEPARTMENT: 2130 TRAFFIC DEPARTMENT

BANK: APBNK

BUDGET TO USE: CB-CURRENT BUDGET

VENDOR	NAME	ITEM #	G/L ACCOUNT NAME	DESCRIPTION	CHECK#	AMOUNT
01-03874	THREE-D SPECIALTIES INC					
		I-216377	101-42130-42540	SIGNS KLEEN-BREAK SURFACE MOUNT	184000	367.66
		I-216643	101-42130-42550	CONSTRUCTION 36" DF SCOTCHLITE UTI	184000	179.50
01-04871	SD DEPT OF TRANSPORTATI					
		I-S00114116	101-42130-42545	PAINT GLASS BEADS	183985	808.40
01-09857	DAKOTA DELIVERY SERVICE					
		I-2755	101-42130-42500	REPAIRS DELIVERY CHARGE	183896	15.00
DEPARTMENT 2130 TRAFFIC DEPARTMENT					TOTAL:	3,382.27

7/29/2020 1:45 PM  
 PACKET: 05500 8/3/20 MEETING  
 VENDOR SET: 01  
 FUND : 101 GENERAL  
 DEPARTMENT: 2200 FIRE DEPARTMENT  
 BUDGET TO USE: CB-CURRENT BUDGET

REGULAR DEPARTMENT PAYMENT REGISTER

BANK: APBNK

VENDOR	NAME	ITEM #	G/L ACCOUNT NAME	DESCRIPTION	CHECK#	AMOUNT
01-01518	VERIZON WIRELESS					
		I-9858131291	101-42200-42800	TELEPHONE ACCT #786752327-00002	184012	100.03
01-01590	MCLEOD'S PRINTING					
		I-41384	101-42200-42200	PROFESSIONAL BUSINESS CARDS	183939	18.17
01-01830	NORTHWESTERN ENERGY & C					
		I-2583799-8-7/20	101-42200-42810	UTILITIES 201 W 1ST AVE	183958	3,202.66
01-02567	S & M PRINTING COMPANY					
		I-75038	101-42200-42613	PROMOTIONAL I COVERS	183978	60.00
01-02679	MENARD'S INC					
		I-1249	101-42200-42600	SUPPLIES CLEANER	183940	33.88
01-02811	JONES SUPPLIES					
		I-125615	101-42200-42600	SUPPLIES PAPER TOWELS	183931	45.60
01-02840	TESSIER'S INC					
		I-TES047739	101-42200-42500	REPAIR & MAIN PLANNED MAINTENANCE SERVICE	183998	218.25
01-05276	M & T FIRE AND SAFETY I					
		I-5957	101-42200-42641	PROTECTIVE CL HELMET	183937	331.95
01-08739	KROGMAN CONSTRUCTION LL					
		I-2020-16 P.E. #1	101-42200-43300	ROOF 2020-16 P.E. #1	183934	6,498.65
01-09509	INNOVATIVE OFFICE SOLUT					
		I-3036490	101-42200-42600	SUPPLIES PAPER, FOLDERS, STAPLES, PENS,	183924	18.09
DEPARTMENT 2200 FIRE DEPARTMENT					TOTAL:	10,527.28

7/29/2020 1:45 PM  
 PACKET: 05500 8/3/20 MEETING  
 VENDOR SET: 01  
 FUND : 101 GENERAL  
 DEPARTMENT: 3100 STREET DEPARTMENT  
 BUDGET TO USE: CB-CURRENT BUDGET

REGULAR DEPARTMENT PAYMENT REGISTER

BANK: APBNK

VENDOR	NAME	ITEM #	G/L ACCOUNT NAME	DESCRIPTION	CHECK#	AMOUNT
01-00424	RUNNINGS SUPPLY INC					
		I-1047205	101-43100-42600	SUPPLIES GLOVES	183976	30.74
01-00436	FARMERS ALLIANCE					
		I-46985	101-43100-42600	SUPPLIES PROPANE	183906	78.75
		I-IV4774	101-43100-42600	SUPPLIES LP BOTTLE FILL 100#,VALVE REPA	183906	144.64
		I-IV4946	101-43100-42600	SUPPLIES LP BOTTLE FILL 20#	183906	9.39
01-01117	WHEELCO BRAKE & SUPPLY					
		I-2201970013	101-43100-42600	SUPPLIES 24SI/160 AMP/J180	184020	173.14
		I-2201970017	101-43100-42600	SUPPLIES BATTERIES	184020	275.44
01-01199	STURDEVANT'S AUTO PARTS					
		I-15-212443	101-43100-42600	SUPPLIES HEATER HOSE,SEALING WASHERS	183994	550.89
		I-15-2512914	101-43100-42600	SUPPLIES 5W30,LUBRICATE,GLASS FUSES,	183994	86.59
01-01325	MEYERS OIL CO					
		I-31352	101-43100-42600	SUPPLIES 15W40	183944	1,152.80
01-02527	TRANSOURCE					
		I-C04213	101-43100-42600	SUPPLIES DOOR L,LOCK	184009	218.27
		I-C04214	101-43100-42600	SUPPLIES THERMOMETER	184009	94.60
01-02679	MENARD'S INC					
		I-869	101-43100-42600	SUPPLIES 1.5V BATTERIES,POWER SUPPLY CO	183940	21.07
01-02790	SUN GOLD SPORTS					
		I-5092	101-43100-42650	UNIFORMS SHIRTS & COVERALL W/LOGO,JEANS	183997	1,158.55
01-03099	LAWSON PRODUCTS INC					
		I-9307693589	101-43100-42600	SUPPLIES HEARING BANDS	183936	47.02
		I-9307693590	101-43100-42600	SUPPLIES CONNECTORS,UNION TEES,HEX CAPS	183936	125.62
		I-9307704368	101-43100-42600	SUPPLIES HAND SANITIZER PUMP BOTTLES	183936	299.44
01-03884	COMMERCIAL ASPHALT/SPEN					
		I-19542	101-43100-42630	GRAVEL- BASE BUSMUS GRAVEL	183889	11,513.00
		I-19557	101-43100-42620	ASPHALT MIX HOT MIX	183889	2,159.40
01-04066	BOYER TRUCKS SIOUX FALL					
		I-48109SFX1	101-43100-42600	SUPPLIES VALVES	183877	232.50
01-04802	MID-AMERICAN RESEARCH C					
		I-704268	101-43100-42600	SUPPLIES DEODORIZER	183947	134.77
01-08130	C & B OPERATIONS LLC					
		I-10834944	101-43100-42600	SUPPLIES SUPPORT	183879	390.87
01-08558	KEVIN ROTH					
		I-54065	101-43100-42650	UNIFORMS JEANS REIMBURSEMENT	183975	44.98

PACKET: 05500 8/3/20 MEETING

VENDOR SET: 01

FUND : 101 GENERAL

DEPARTMENT: 3100 STREET DEPARTMENT

BANK: APBNK

BUDGET TO USE: CB-CURRENT BUDGET

VENDOR	NAME	ITEM #	G/L ACCOUNT NAME	DESCRIPTION	CHECK#	AMOUNT
01-09509	INNOVATIVE OFFICE SOLUT	I-3033573	101-43100-42600	SUPPLIES	LEGAL PADS,MECH PENCILS,DESK T 183924	100.29
01-09703	AMAZON CAPITAL SERVICES	I-19CR-C6X6-GT3D	101-43100-42600	SUPPLIES	FACE GUARDS	183860 21.98
01-09989	ANDERSON-CRANE RUBBER C	I-SF16790301	101-43100-42600	SUPPLIES	SKIRTBOARDS	183864 179.00
					DEPARTMENT 3100 STREET DEPARTMENT	TOTAL: 19,243.74

PACKET: 05500 8/3/20 MEETING

VENDOR SET: 01

FUND : 101 GENERAL

DEPARTMENT: 3110 PUBLIC WORKS ADMIN

BANK: APBNK

BUDGET TO USE: CB-CURRENT BUDGET

VENDOR	NAME	ITEM #	G/L ACCOUNT NAME	DESCRIPTION	CHECK#	AMOUNT
01-03114	SUBWAY	I-447190	101-43110-42750	PLANNING COMM MEALS 7/27 PLANNING COMM	183996	44.03
01-03678	INTERSTATE OFFICE PRODU	I-01DK7512	101-43110-42600	SUPPLIES KEYBOARD DRAWER	183926	61.29
DEPARTMENT 3110 PUBLIC WORKS ADMIN					TOTAL:	105.32

PACKET: 05500 8/3/20 MEETING

VENDOR SET: 01

FUND : 101 GENERAL

DEPARTMENT: 3120 STREET & SIDEWALK CONST

BANK: APBNK

BUDGET TO USE: CB-CURRENT BUDGET

VENDOR	NAME	ITEM #	G/L ACCOUNT NAME	DESCRIPTION	CHECK#	AMOUNT
01-00430	JEBRO INC					
		I-204362	101-43120-42680	CHIP SEAL ASP ASPHALT	183929	14,205.10
		I-204461	101-43120-42680	CHIP SEAL ASP ASPHALT	183929	14,221.48
		I-205075	101-43120-42680	CHIP SEAL ASP ASPHALT	183929	14,595.00
		I-205209	101-43120-42680	CHIP SEAL ASP ASPHALT	183929	14,483.50
		I-205420	101-43120-42680	CHIP SEAL ASP ASPHALT	183929	15,169.23
		I-205454	101-43120-42680	CHIP SEAL ASP ASPHALT	183929	14,455.63
01-00470	COMMERCIAL ASPHALT					
		I-2020-15 P.E. #4	101-43120-43300	STREET OVERLA 2020-15 P.E. #4	183888	42,623.80
01-00717	H & W CONTRACTING LLC					
		I-2019-22 P.E. #13	101-43120-43315	SANBORN-1ST T 2019-22 P.E. #13	183917	7,122.27
01-01036	REXWINKEL CONCRETE INC.					
		I-2019-4 P.E. #2	101-43120-42521	SIDEWALK CONS 2019-4 P.E. #2	183971	7,625.70
01-02470	CORE & MAIN LP					
		I-M614543	101-43120-42521	SIDEWALK CONS WARNING PLATES	183891	1,650.00
01-08014	VERN EIDE CHEVROLET BUI					
		I-16028461/1	101-43120-42680	CHIP SEAL ASP TOW	184013	90.00
		I-3457	101-43120-42670	CHIP SEAL AGG TOW	184013	90.00
01-08307	TOP GRADE CONCRETE					
		I-2019-4 P.E. #10	101-43120-42520	HAZARDOUS SID 2019-4 P.E. #10	184007	3,057.20
		I-2019-4D P.E. #5	101-43120-42521	SIDEWALK CONS 2019-4D P.E. #5	184007	7,378.00
DEPARTMENT 3120 STREET & SIDEWALK CONST TOTAL:						156,766.91

PACKET: 05500 8/3/20 MEETING  
VENDOR SET: 01  
FUND : 101 GENERAL  
DEPARTMENT: 3150 STORM DRAINAGE  
BUDGET TO USE: CB-CURRENT BUDGET

BANK: APBNK

VENDOR	NAME	ITEM #	G/L ACCOUNT NAME	DESCRIPTION	CHECK#	AMOUNT
01-00717	H & W CONTRACTING LLC					
		I-2019-22 P.E. #13	101-43150-43306	SANBORN-8TH T 2019-22 P.E. #13	183917	444,031.29
01-01830	NORTHWESTERN ENERGY & C					
		I-3288018-9-7/20	101-43150-42800	UTILITIES CABELA DR	183958	54.65
01-02480	SCHMUCKER PAUL & NOHR					
		I-2018-39 P.E. #79	101-43150-43316	EAST CENTRAL 2018-39 P.E. #79	183982	4,790.05
		I-2019-22 P.E. #53	101-43150-43306	SANBORN-8TH T 2019-22 P.E. #53	183982	2,358.93
		I-2019-22 P.E. #55	101-43150-43306	SANBORN-8TH T 2019-22 P.E. #55	183982	87.12
		I-2019-39 P.E. #26	101-43150-43316	EAST CENTRAL 2019-39 P.E. #26	183982	7,232.00
		I-2019-39 P.E. #27	101-43150-43316	EAST CENTRAL 2019-39 P.E. #27	183982	3,080.00
01-06294	BROSZ ENGINEERING INC					
		I-2019-22 P.E. #9	101-43150-43306	SANBORN-8TH T 2019-22 P.E. #8	183878	31,297.50
01-08307	TOP GRADE CONCRETE					
		I-2019-4 P.E. #10	101-43150-42500	REPAIR & MAIN 2019-4 P.E. #10	184007	1,184.30
01-08321	MENNING BACKHOE					
		I-2018-39 P.E. #11	101-43150-43316	EAST CENTRAL 2018-39 P.E. #11	183942	54,969.25
DEPARTMENT 3150 STORM DRAINAGE					TOTAL:	549,085.09



7/29/2020 1:45 PM  
 PACKET: 05500 8/3/20 MEETING  
 VENDOR SET: 01  
 FUND : 101 GENERAL  
 DEPARTMENT: 3700 CEMETERY  
 BUDGET TO USE: CB-CURRENT BUDGET

REGULAR DEPARTMENT PAYMENT REGISTER

BANK: APBNK

VENDOR	NAME	ITEM #	G/L ACCOUNT NAME	DESCRIPTION	CHECK#	AMOUNT
01-00356	QUALIFIED PRESORT					
		I-2279-5708	101-43700-42600	SUPPLIES & MA MAILING SERVICE	183969	7.15
01-00525	DAKOTA PUMP INC					
		I-13446	101-43700-42500	REPAIR & MAIN REPAIRS	183898	1,997.96
01-00532	A-OX WELDING SUPPLY CO					
		I-1139709	101-43700-42600	SUPPLIES & MA CYLINDER	183857	108.80
01-00985	HONDA OF MITCHELL					
		I-122970	101-43700-42600	SUPPLIES & MA SYN ULTRA MIXER	183921	53.96
		I-123151	101-43700-42600	SUPPLIES & MA SAFETY FLAG POLES	183921	10.00
01-01325	MEYERS OIL CO					
		I-12791	101-43700-42610	GAS & FUEL DIESEL FUEL #2R	183944	247.50
01-01355	MIDWEST TURF & IRRIGATI					
		I-3850491-00	101-43700-42600	SUPPLIES & MA COVER	183949	70.42
01-01395	MITCHELL CONCRETE PRODU					
		I-93351	101-43700-42600	SUPPLIES & MA STEPPING STONES	183952	34.50
01-01830	NORTHWESTERN ENERGY & C					
		I-2581639-8-7/20	101-43700-42800	UTILITIES 700 W 23RD AVE	183958	152.42
		I-2581641-4-7/20	101-43700-42800	UTILITIES W 23RD	183958	10.00
		I-2581642-2-7/20	101-43700-42800	UTILITIES 600 W 23RD AVE PUMP	183958	3.93
01-09703	AMAZON CAPITAL SERVICES					
		I-1KK4-4RKX-FRHC	101-43700-42600	SUPPLIES & MA STUMP GRINDER TEETH	183860	54.35
		I-1QK4-FJC7-WCDR	101-43700-42600	SUPPLIES & MA STUMP GRINDER TOOTH CENTER	183860	18.79
DEPARTMENT 3700 CEMETERY					TOTAL:	2,769.78

PACKET: 05500 8/3/20 MEETING

VENDOR SET: 01

FUND : 101 GENERAL

DEPARTMENT: 4120 ANIMAL CONTROL

BANK: APBNK

BUDGET TO USE: CB-CURRENT BUDGET

VENDOR	NAME	ITEM #	G/L ACCOUNT NAME	DESCRIPTION	CHECK#	AMOUNT
01-09865	MITCHELL ANIMAL RESCUE					
		I-AUGUST 2020	101-44120-42900	IMPOUNDING DO AUGUST PAYMENT	183951	350.00
DEPARTMENT 4120 ANIMAL CONTROL					TOTAL:	350.00

7/29/2020 1:45 PM  
 PACKET: 05500 8/3/20 MEETING  
 VENDOR SET: 01  
 FUND : 101 GENERAL  
 DEPARTMENT: 5500 LIBRARY  
 BUDGET TO USE: CB-CURRENT BUDGET

BANK: APBNK

VENDOR	NAME	ITEM #	G/L ACCOUNT NAME	DESCRIPTION	CHECK#	AMOUNT
01-00141	OCLC INC					
		I-1000007361	101-45500-42690	MINITEX FEES CATALOGING SUBSCRIPTION	183963	354.63
		I-1000020674	101-45500-42690	MINITEX FEES CATALOGING SUBSCRIPTION	183963	354.63
		I-1000034217	101-45500-42690	MINITEX FEES CATALOGING SUBSCRIPTION	183963	354.63
		I-694508	101-45500-42690	MINITEX FEES CATALOGING SUBSCRIPTION	183963	354.63
01-00424	RUNNINGS SUPPLY INC					
		I-1044645	101-45500-42600	SUPPLIES & MA TRIMEC WEED CONCENTRATE	183976	14.99
01-01015	INGRAM LIBRARY SERVICES					
		I-44175087	101-45500-43420	BOOKS BOOKS	183923	476.79
		I-44356200	101-45500-43420	BOOKS BOOKS	183923	121.57
		I-44429707	101-45500-43420	BOOKS BOOKS	183923	30.18
01-01417	GOLDEN WEST TECHNOLOGIE					
		I-370018	101-45500-42800	UTILITIES QUARTERLY ALARM MONITORING	183913	89.97
01-02811	JONES SUPPLIES					
		I-125638	101-45500-42600	SUPPLIES & MA URINAL SCREENS	183931	24.34
01-02880	THUNE TRUE VALUE HARDWA					
		I-B217062	101-45500-42500	REPAIR & MAIN LAWN MOWER FILTER	184001	5.99
01-03520	YANKTON DAILY PRESS & D					
		I-242331-2020	101-45500-42310	NEWSPAPERS SUBSCRIPTION	184022	186.33
01-04293	JCL SOLUTIONS					
		I-1213216	101-45500-42600	SUPPLIES & MA CLEANERS	183928	68.95
01-06583	BAKER & TAYLOR					
		I-2035314144	101-45500-43420	BOOKS BOOKS	183871	5.98
		I-2035342625	101-45500-43420	BOOKS BOOK	183871	3.59
01-06750	MITCHELL TELECOM					
		I-10840248	101-45500-42800	UTILITIES ACCT #217267-0	183955	67.95
01-09703	AMAZON CAPITAL SERVICES					
		I-1NQX-CLNX-JQK4	101-45500-42600	SUPPLIES & MA FACE SHIELDS	183860	29.99
		I-1NT4-C1X4-6M9Y	101-45500-42600	SUPPLIES & MA THERMOMETERS,MASKS	183860	49.99
					TOTAL:	2,595.13
					TOTAL:	768,159.03

7/29/2020 1:45 PM  
 PACKET: 05500 8/3/20 MEETING  
 VENDOR SET: 01  
 FUND : 201 PARK FUND  
 DEPARTMENT: 5110 RECREATION & AQUATICS  
 BUDGET TO USE: CB-CURRENT BUDGET

BANK: APBNK

VENDOR	NAME	ITEM #	G/L ACCOUNT NAME	DESCRIPTION	CHECK#	AMOUNT
01-00525	DAKOTA PUMP INC					
		I-13581	201-45110-42550	REPAIR & MAIN REPAIR OUTDOOR POOL PUMP	183898	5,311.92
	PROJ: J50-RM-PLUMB		OUTDOOR AQUATIC CENTER	REPAIR/MAINT-PLUMBING		
01-01590	MCLEOD'S PRINTING					
		I-41270	201-45110-42605	SUPPLIES & MA TIME CARDS	183939	170.00
	PROJ: J50-SM-OFFIC		OUTDOOR AQUATIC CENTER	SUPPLIES/MATERIAL-OFFICE		
		I-41270	201-45110-42600	SUPPLIES & MA TIME CARDS	183939	170.00
	PROJ: J52-SM-OFFIC		P&A ADULT PROGRAMS	SUPPLIES-MATERIAL-OFFICE		
01-01964	DAKOTA SUPPLY GROUP					
		I-S100223365.001	201-45110-42550	REPAIR & MAIN FCT LAV SNSR SYMMONS	183899	439.26
	PROJ: J50-RM-EQUIP		OUTDOOR AQUATIC CENTER	REPAIR/MAINT-EQUIPMENT		
01-02560	PEPSI COLA COMPANY					
		I-97697423	201-45110-42601	CONCESSION SU FRUIT JUICES	183965	200.00
	PROJ: J50-CONCESS		OUTDOOR AQUATIC CENTER	CONCESSIONS		
		I-97697948	201-45110-42601	CONCESSION SU POP,FRUIT PUNCH,WATER	183965	322.30
	PROJ: J50-CONCESS		OUTDOOR AQUATIC CENTER	CONCESSIONS		
		I-97698494	201-45110-42601	CONCESSION SU POP,WATER	183965	304.75
	PROJ: J50-CONCESS		OUTDOOR AQUATIC CENTER	CONCESSIONS		
01-02679	MENARD'S INC					
		I-681	201-45110-42605	SUPPLIES & MA BLEACH,26W BULBS	183940	50.40
	PROJ: J50-SM-JANIT		OUTDOOR AQUATIC CENTER	SUPPLIES/MATERIAL-JANITORIAL		
		I-770	201-45110-42605	SUPPLIES & MA FLAPPER,VACUUM BREAKER,	183940	20.32
	PROJ: J50-SM-PLUMB		OUTDOOR AQUATIC CENTER	SUPPLIES/MATERIAL-PLUMBING		
01-02880	THUNE TRUE VALUE HARDWA					
		I-B215399	201-45110-42605	SUPPLIES & MA COVERS,WASP SPRAY	184001	30.43
	PROJ: J50-SM-OFFIC		OUTDOOR AQUATIC CENTER	SUPPLIES/MATERIAL-OFFICE		
01-03267	WALMART COMMUNITY/SYNCE					
		I-4853	201-45110-42600	SUPPLIES & MA DAKOTA KIDS PRODUCT	184015	46.91
	PROJ: J51-SM-EQUIP		P&A YOUTH PROGRAMS	SUPPLIES/MATERIAL-EQUIPMENT		
01-03700	CORE-MARK MIDCONTINENT					
		I-7722962	201-45110-42601	CONCESSION SU AQUATIC CENTER CONCESSION PROD	183892	660.27
	PROJ: J50-CONCESS		OUTDOOR AQUATIC CENTER	CONCESSIONS		
		I-7734149	201-45110-42601	CONCESSION SU AQUATIC CENTER CONCESSION PROD	183892	741.10
	PROJ: J50-CONCESS		OUTDOOR AQUATIC CENTER	CONCESSIONS		
		I-7743990	201-45110-42601	CONCESSION SU AQUATIC CENTER CONCESSION PROD	183892	524.42
	PROJ: J50-CONCESS		OUTDOOR AQUATIC CENTER	CONCESSIONS		
01-09509	INNOVATIVE OFFICE SOLUT					
		I-3034943	201-45110-42600	SUPPLIES & MA PAPER	183924	31.08
	PROJ: J51-SM-OFFIC		P&A YOUTH PROGRAMS	SUPPLIES/MATERIAL-OFFICE		
DEPARTMENT 5110 RECREATION & AQUATICS					TOTAL:	9,023.16

PACKET: 05500 8/3/20 MEETING

VENDOR SET: 01

FUND : 201 PARK FUND

DEPARTMENT: 5140 RECREATION CENTER

BANK: APBNK

BUDGET TO USE: CB-CURRENT BUDGET

VENDOR	NAME	ITEM #	G/L ACCOUNT NAME	DESCRIPTION	CHECK#	AMOUNT
01-00424	RUNNINGS SUPPLY INC					
		I-1045359	201-45140-42600	SUPPLIES & MA FILES	183976	10.98
	PROJ: H51-42600		PARK SHOP	SUPPLIES/MATERIALS		
01-01193	KROHMER PLUMBING INC					
		I-49749	201-45140-42500	REPAIR & MAIN REPLACE FITTINGS FOR POOL	183935	357.75
	PROJ: J02-RM-PLUMB		INDOOR AQUATIC CTR	REPAIR/MAINT-PLUMBING		
		I-49749	201-45140-42600	SUPPLIES & MA REPLACE FITTINGS FOR POOL	183935	186.26
	PROJ: J02-SM-PLUMB		INDOOR AQUATIC CTR	SUPPLIES/MATERIALS-PLUMBING		
01-01410	MITCHELL SCHOOL DISTRIC					
		I-2583796-4-6/20	201-45140-42800	UTILITIES CITY SHARE-1301 N KIMBALL ST	183954	1,233.67
	PROJ: J09-ELE/GAS		REC CTR UTILITIES	UTILITIES-ELECTRIC/GAS		
01-01497	GRAINGER					
		I-9584602875	201-45140-42600	SUPPLIES & MA COUPLINGS,STONE FLANGE	183914	44.88
	PROJ: J02-SM-PLUMB		INDOOR AQUATIC CTR	SUPPLIES/MATERIALS-PLUMBING		
		I-9584887815	201-45140-42600	SUPPLIES & MA CAP	183914	22.60
	PROJ: J02-SM-PLUMB		INDOOR AQUATIC CTR	SUPPLIES/MATERIALS-PLUMBING		
		I-9588961335	201-45140-42600	SUPPLIES & MA CLEANER	183914	22.80
	PROJ: J06-SM-JANIT		REC CTR-GENERAL BLDG	SUPPLIES/MATERIAL-JANITORIAL		
		I-9588961343	201-45140-42600	SUPPLIES & MA AA & AAA BATTERIES	183914	9.70
	PROJ: J06-SM-GENER		REC CTR-GENERAL BLDG	SUPPLIES/MATERIAL-GENERAL		
01-01590	MCLEOD'S PRINTING					
		I-41270	201-45140-42600	SUPPLIES & MA TIME CARDS	183939	170.00
	PROJ: J02-SM-OFFIC		INDOOR AQUATIC CTR	SUPPLIES/MATERIALS-OFFICE		
01-01830	NORTHWESTERN ENERGY & C					
		I-3510842-2-7/20	201-45140-42800	UTILITIES 1300 N MAIN CNTR	183958	4,455.75
	PROJ: J02-ELE/GAS		INDOOR AQUATIC CTR	UTILITIES-ELECTRIC/GAS		
01-01929	B & B UPHOLSTERY					
		I-720201	201-45140-42500	REPAIR & MAIN RECOVERED 4 ARM PADS	183869	220.00
	PROJ: J03-RM-EQUIP		REC CTR-WELLNESS/FITNESS	REPAIR/MAINTENANCE-EQUIPMENT		
01-02560	PEPSI COLA COMPANY					
		I-97697941	201-45140-42601	CONCESSION SU GATORADE,WATER	183965	341.12
	PROJ: J05-CONC SUP		REC CTR CONCESSIONS	CONCESSION SUPPLY		
		I-97698480	201-45140-42601	CONCESSION SU POP,FRUIT PUNCH,FRUIT JUICES	183965	124.54
	PROJ: J05-CONC SUP		REC CTR CONCESSIONS	CONCESSION SUPPLY		
01-02567	S & M PRINTING COMPANY					
		I-74828	201-45140-42600	SUPPLIES & MA SCHEDULES	183978	29.00
	PROJ: J02-SM-EQUIP		INDOOR AQUATIC CTR	SUPPLIES/MATERIAL-EQUIPMENT		
		I-74829	201-45140-42600	SUPPLIES & MA SCHEDULES	183978	49.00
	PROJ: J02-SM-EQUIP		INDOOR AQUATIC CTR	SUPPLIES/MATERIAL-EQUIPMENT		
01-02811	JONES SUPPLIES					

7/29/2020 1:45 PM  
 PACKET: 05500 8/3/20 MEETING  
 VENDOR SET: 01  
 FUND : 201 PARK FUND  
 DEPARTMENT: 5140 RECREATION CENTER  
 BUDGET TO USE: CB-CURRENT BUDGET

REGULAR DEPARTMENT PAYMENT REGISTER

BANK: APBNK

VENDOR	NAME	ITEM #	G/L ACCOUNT NAME	DESCRIPTION	CHECK#	AMOUNT
01-02811	JONES SUPPLIES		continued			
		I-125572	201-45140-42600	SUPPLIES & MA SPRAYERS,BOTTLES	183931	45.36
	PROJ: J06-SM-JANIT		REC CTR-GENERAL BLDG	SUPPLIES/MATERIAL-JANITORIAL		
01-02880	THUNE TRUE VALUE HARDWA					
		I-A444064	201-45140-42600	SUPPLIES & MA DOOR STOP	184001	8.79
	PROJ: J06-SM-GENER		REC CTR-GENERAL BLDG	SUPPLIES/MATERIAL-GENERAL		
		I-A444311	201-45140-42600	SUPPLIES & MA SPR SNAP LINK	184001	3.99
	PROJ: J06-SM-GENER		REC CTR-GENERAL BLDG	SUPPLIES/MATERIAL-GENERAL		
		I-A444854	201-45140-42600	SUPPLIES & MA UNIV CART FILTER	184001	14.99
	PROJ: J06-SM-HVAC		REC CTR-GENERAL BLDG	SUPPLIES/MATERIAL-HVAC		
		I-A444910	201-45140-42600	SUPPLIES & MA WIRE HOOK	184001	10.99
	PROJ: J06-SM-GENER		REC CTR-GENERAL BLDG	SUPPLIES/MATERIAL-GENERAL		
		I-A445062	201-45140-42600	SUPPLIES & MA WRENCH OIL	184001	5.49
	PROJ: J06-SM-GENER		REC CTR-GENERAL BLDG	SUPPLIES/MATERIAL-GENERAL		
		I-A445521	201-45140-42600	SUPPLIES & MA PASTE,SEAL TAPE,STRIPPER,CONNE	184001	19.36
	PROJ: J06-SM-GENER		REC CTR-GENERAL BLDG	SUPPLIES/MATERIAL-GENERAL		
		I-B216108	201-45140-42600	SUPPLIES & MA MIXING CONTAINER	184001	1.99
	PROJ: J06-SM-GENER		REC CTR-GENERAL BLDG	SUPPLIES/MATERIAL-GENERAL		
01-07716	SAGA COMMUNICATIONS OF					
		I-1200691495-6/20	201-45140-42300	PUBLISHING CONTRACT #119732-PARK & REC	183979	340.00
	PROJ: J08-KMIT		REC CTR PUBLISHING	PUBLISHING-KMIT		
		I-1200691640-6/20	201-45140-42300	PUBLISHING CONTRACT #513130-PARK & REC	183979	182.00
	PROJ: J08-KMIT		REC CTR PUBLISHING	PUBLISHING-KMIT		
		I-1200691642-6/20	201-45140-42300	PUBLISHING CONTRACT #119396-PARK & REC	183979	345.00
	PROJ: J08-KMIT		REC CTR PUBLISHING	PUBLISHING-KMIT		
		I-1200691663-6/20	201-45140-42300	PUBLISHING CONTRACT #900531-PARK & REC	183979	65.00
	PROJ: J08-KMIT		REC CTR PUBLISHING	PUBLISHING-KMIT		
01-09509	INNOVATIVE OFFICE SOLUT					
		I-3034943	201-45140-42600	SUPPLIES & MA PAPER	183924	31.09
	PROJ: J04-SM-OFFIC		REC CTR-PROGRAMS	SUPPLIES/MATERIAL-OFFICE		
01-09633	STAPLES					
		I-3451131171	201-45140-42600	SUPPLIES & MA CLEANER	183991	19.11
	PROJ: J06-SM-JANIT		REC CTR-GENERAL BLDG	SUPPLIES/MATERIAL-JANITORIAL		
		I-3451131176	201-45140-42600	SUPPLIES & MA FLOOR BUFFING PADS	183991	43.35
	PROJ: J06-SM-JANIT		REC CTR-GENERAL BLDG	SUPPLIES/MATERIAL-JANITORIAL		
01-09703	AMAZON CAPITAL SERVICES					
		I-1663-DFWK-G7LF	201-45140-42600	SUPPLIES & MA ALADDIN GOKIT38	183860	74.85
	PROJ: J02-SM-PLUMB		INDOOR AQUATIC CTR	SUPPLIES/MATERIALS-PLUMBING		
		I-1P7J-GGHX-7JTC	201-45140-42600	SUPPLIES & MA BARBELL COLLARS,BANDS	183860	101.95
	PROJ: J03-SM-EQUIP		REC CTR-WELLNESS/FITNESS	SUPPLIES/MATERIAL-EQUIPMENT		
		I-LGPK-JCV1-NF61	201-45140-42500	REPAIR & MAIN POOL PLASTER REPAIR KIT	183860	54.90
	PROJ: J02-RM-EQUIP		INDOOR AQUATIC CTR	REPAIR/MAINT-EQUIPMENT		
01-09994	JOHN WESTRA					

PACKET: 05500 8/3/20 MEETING

VENDOR SET: 01

FUND : 201 PARK FUND

DEPARTMENT: 5140 RECREATION CENTER

BANK: APBNK

BUDGET TO USE: CB-CURRENT BUDGET

VENDOR	NAME	ITEM #	G/L ACCOUNT NAME	DESCRIPTION	CHECK#	AMOUNT
01-09994	JOHN WESTRA		continued			
		I-71520	201-45140-42999	REFUNDS MEMBERSHIP REFUND	184019	40.00
	PROJ: J04-REFUND		REC CTR-PROGRAMS	REFUND MEMBERSHIP		
				DEPARTMENT 5140 RECREATION CENTER	TOTAL:	8,686.26

PACKET: 05500 8/3/20 MEETING

VENDOR SET: 01

FUND : 201 PARK FUND

DEPARTMENT: 5160 SPORTS COMPLEXES

BANK: APBNK

BUDGET TO USE: CB-CURRENT BUDGET

VENDOR	NAME	ITEM #	G/L ACCOUNT NAME	DESCRIPTION	CHECK#	AMOUNT
01-00424	RUNNINGS SUPPLY INC					
		I-1043511	201-45160-42600	SUPPLIES & MA DEFOAMER, CONCRETE MIX	183976	27.97
	PROJ: H12-42600		DOG PARK	SUPPLIES/MATERIALS		
		I-1046056	201-45160-42500	REPAIR & MAIN POLY TWIST ROPE	183976	17.58
	PROJ: H08-42500		PATTON YOUNG PARK	REPAIR/MAINTENANCE		
01-00555	MICHAELS FENCE & SUPPLY					
		I-82575	201-45160-42500	REPAIR & MAIN DOG FENCE PRODUCT	183945	397.63
	PROJ: H12-42500		DOG PARK	REPAIR/MAINTENANCE		
01-00712	NAPA AUTO PARTS					
		I-729014	201-45160-42500	REPAIR & MAIN TUNE-UP	183957	25.96
	PROJ: H01-42500		SPORTS COMPLEX EQUIPMENT	REPAIR/MAINTENANCE		
01-00985	HONDA OF MITCHELL					
		I-122901	201-45160-42600	SUPPLIES & MA CHAIN OIL	183921	16.99
	PROJ: H01-42600		SPORTS COMPLEX EQUIPMENT	SUPPLIES/MAINTENANCE		
01-01117	WHEELCO BRAKE & SUPPLY					
		I-220200007	201-45160-42500	REPAIR & MAIN LOCK NUTS, SHACKLE BOLTS & LINK	184020	170.66
	PROJ: H01-42500		SPORTS COMPLEX EQUIPMENT	REPAIR/MAINTENANCE		
01-01193	KROHMER PLUMBING INC					
		I-49615	201-45160-42500	REPAIR & MAIN CONTROL BOXES	183935	157.64
	PROJ: H07-42500		PEPSI COMPLEX	REPAIR/MAINTENANCE		
		I-49717	201-45160-42500	REPAIR & MAIN MIXING VALVES	183935	144.10
	PROJ: H07-42500		PEPSI COMPLEX	REPAIR/MAINTENANCE		
01-01199	STURDEVANT'S AUTO PARTS					
		I-15-211444	201-45160-42500	REPAIR & MAIN FUSE HOLDER, FILTERS, CYLINDER,	183994	354.65
	PROJ: H01-42500		SPORTS COMPLEX EQUIPMENT	REPAIR/MAINTENANCE		
		I-15-211904	201-45160-42500	REPAIR & MAIN FUEL STRAINER, FUEL FILTER, POWE	183994	8.39
	PROJ: H01-42500		SPORTS COMPLEX EQUIPMENT	REPAIR/MAINTENANCE		
01-01590	MCLEOD'S PRINTING					
		I-41270	201-45160-42600	SUPPLIES & MA TIME CARDS	183939	170.00
	PROJ: H13-42600		ARENA-SOUTH RINK	SUPPLIES-MAINTENANCE		
01-01805	FASTENAL COMPANY					
		I-SDMIT150856	201-45160-42600	SUPPLIES & MA CABLE TIES, TIE WIRE, TAPCN	183907	69.05
	PROJ: H02-42600		CADWELL STADIUM	SUPPLIES/MATERIALS		
01-01830	NORTHWESTERN ENERGY & C					
		I-2579141-9-7/20	201-45160-42800	UTILITIES 1001 N MINNESOTA EMTR	183958	613.56
	PROJ: H06-42800		ARENA-NORTH RINK	UTILITIES		
		I-2834109-7-7/20	201-45160-42800	UTILITIES LAKE MITCHELL PUMP CADWELL	183958	525.48
	PROJ: H02-42800		CADWELL STADIUM	UTILITIES		
		I-2991007-2-7/20	201-45160-42800	UTILITIES 1001 N MINNESOTA GMTR	183958	23.92
	PROJ: H13-42800		ARENA-SOUTH RINK	UTILITIES		



PACKET: 05500 8/3/20 MEETING

VENDOR SET: 01

FUND : 201 PARK FUND

DEPARTMENT: 5160 SPORTS COMPLEXES

BANK: APBNK

BUDGET TO USE: CB-CURRENT BUDGET

VENDOR	NAME	ITEM #	G/L ACCOUNT NAME	DESCRIPTION	CHECK#	AMOUNT
01-02679	MENARD'S INC					
		I-1149	201-45160-42600	SUPPLIES & MA 150W & 70W BULBS,CONNECTORS	183940	168.66
	PROJ: H07-42600		PEPSI COMPLEX	SUPPLIES/MATERIALS		
		I-1212	201-45160-42500	REPAIR & MAIN STOPS RUST,PLUGS	183940	8.68
	PROJ: H12-42500		DOG PARK	REPAIR/MAINTENANCE		
		I-470	201-45160-42600	SUPPLIES & MA BEARING PROTECTORS,STRAIN RELI	183940	23.43
	PROJ: H07-42600		PEPSI COMPLEX	SUPPLIES/MATERIALS		
		I-678	201-45160-42600	SUPPLIES & MA F&P PRESERVATIVE NATURAL	183940	24.99
	PROJ: H07-42600		PEPSI COMPLEX	SUPPLIES/MATERIALS		
01-02804	TMA STORES					
		I-74939	201-45160-42500	REPAIR & MAIN TIRE REPAIR	184006	27.82
	PROJ: H01-42500		SPORTS COMPLEX EQUIPMENT	REPAIR/MAINTENANCE		
		I-75044	201-45160-42500	REPAIR & MAIN FLAT TIRE REPAIR	184006	23.47
	PROJ: H01-42500		SPORTS COMPLEX EQUIPMENT	REPAIR/MAINTENANCE		
		I-75045	201-45160-42500	REPAIR & MAIN LOOSE FLAT REPAIR	184006	12.88
	PROJ: H01-42500		SPORTS COMPLEX EQUIPMENT	REPAIR/MAINTENANCE		
01-02811	JONES SUPPLIES					
		I-125542	201-45160-42600	SUPPLIES & MA TOILET PAPER,SCREENS	183931	146.63
	PROJ: H05-42600		SOFTBALL	SUPPLIES/MATERIALS		
		I-125685	201-45160-42600	SUPPLIES & MA FOAM SANITIZER,DISPENSERS	183931	82.66
	PROJ: H02-42600		CADWELL STADIUM	SUPPLIES/MATERIALS		
01-02880	THUNE TRUE VALUE HARDWA					
		I-A445990	201-45160-42500	REPAIR & MAIN FLUSH LEVER,TOILET FLAPPER	184001	12.78
	PROJ: H02-42500		CADWELL STADIUM	REPAIR/MAINTENANCE		
01-03172	BECKER ARENA PRODUCTS I					
		I-1023926	201-45160-42600	SUPPLIES & MA PAPER LINE KIT,LUMIN'ICE PRO P	183874	2,560.54
	PROJ: H06-42600		ARENA-NORTH RINK	SUPPLIES-MATERIALS		
01-06698	BEACON ATHLETICS					
		I-519249	201-45160-43300	CAPITAL IMPRO BATTING CAGE	183873	12,141.00
	PROJ: H04-43300		BASEBALL	CAPITAL IMPROVEMENTS		
01-07696	FERGUSON WATERWORKS #25					
		I-365856	201-45160-42600	SUPPLIES & MA TEE,BUSHINGS,COUPLING,ELLS	183908	174.83
	PROJ: H02-42600		CADWELL STADIUM	SUPPLIES/MATERIALS		
		I-365859	201-45160-42600	SUPPLIES & MA COUPLINGS	183908	128.91
	PROJ: H03-42600		OLD SOCCER FIELDS	SUPPLIES/MATERIALS		
01-09004	DAK TECH INC					
		I-340616	201-45160-42603	SMALL EQUIPME WORKSTATION	183895	755.00
	PROJ: H13-42603		ARENA-SOUTH RINK	SMALL EQUIPMENT		
01-09633	STAPLES					
		I-3450868791	201-45160-42600	SUPPLIES & MA INK CARTRIDGES	183991	69.98
	PROJ: H13-42600		ARENA-SOUTH RINK	SUPPLIES-MAINTENANCE		

PACKET: 05500 8/3/20 MEETING

VENDOR SET: 01

FUND : 201 PARK FUND

DEPARTMENT: 5160 SPORTS COMPLEXES

BANK: APBNK

BUDGET TO USE: CB-CURRENT BUDGET

VENDOR	NAME	ITEM #	G/L ACCOUNT NAME	DESCRIPTION	CHECK#	AMOUNT
01-09991	DAKOTA PRO STRIPING LLC					
		I-2197	201-45160-42500	REPAIR & MAIN IRRIGATION REPAIRS @ CADWELL	183897	1,326.53
	PROJ: H02-42500		CADWELL STADIUM	REPAIR/MAINTENANCE		
DEPARTMENT 5160 SPORTS COMPLEXES					TOTAL:	20,412.37

PACKET: 05500 8/3/20 MEETING

VENDOR SET: 01

FUND : 201 PARK FUND

DEPARTMENT: 5165 CADWELL CONCESSIONS

BANK: APBNK

BUDGET TO USE: CB-CURRENT BUDGET

VENDOR	NAME	ITEM #	G/L ACCOUNT NAME	DESCRIPTION	CHECK#	AMOUNT
01-02560	PEPSI COLA COMPANY					
		I-97698810	201-45165-42610	COST OF GOODS POP,WATER,GATORADE	183965	267.28
DEPARTMENT 5165 CADWELL CONCESSIONS					TOTAL:	267.28

7/29/2020 1:45 PM  
 PACKET: 05500 8/3/20 MEETING  
 VENDOR SET: 01  
 FUND : 201 PARK FUND  
 DEPARTMENT: 5210 PARKS  
 BUDGET TO USE: CB-CURRENT BUDGET

BANK: APBNK

VENDOR	NAME	ITEM #	G/L ACCOUNT NAME	DESCRIPTION	CHECK#	AMOUNT
01-00424	RUNNINGS SUPPLY INC					
		I-1042886	201-45210-42600	SUPPLIES & MA PRUNER SETS,PADLOCK	183976	22.92
	PROJ: H50-42600		PARKS EQUIPMENT	SUPPLIES/MATERIALS		
		I-1045686	201-45210-42650	UNIFORMS JEANS	183976	44.99
		I-1045687	201-45210-42600	SUPPLIES & MA WIREGARD	183976	16.49
	PROJ: H56-42600		HITCHCOCK PARK	SUPPLIES/MATERIALS		
01-00428	CARQUEST AUTO PARTS INC					
		I-4977-225343	201-45210-42600	SUPPLIES & MA SPARK PLUG	183880	3.99
	PROJ: H50-42600		PARKS EQUIPMENT	SUPPLIES/MATERIALS		
		I-4977-226881	201-45210-42600	SUPPLIES & MA GREASE	183880	27.98
	PROJ: H50-42600		PARKS EQUIPMENT	SUPPLIES/MATERIALS		
01-00712	NAPA AUTO PARTS					
		I-729917	201-45210-42500	REPAIR & MAIN STEERING PUMP	183957	100.69
	PROJ: H50-42500		PARKS EQUIPMENT	REPAIR/MAINTENANCE		
		I-729942	201-45210-42500	REPAIR & MAIN POWER STEERING HOSE	183957	11.91
	PROJ: H50-42500		PARKS EQUIPMENT	REPAIR/MAINTENANCE		
01-01199	STURDEVANT'S AUTO PARTS					
		I-15-211444	201-45210-42500	REPAIR & MAIN FUSE HOLDER,FILTERS,CYLINDER,	183994	100.02
	PROJ: H50-42500		PARKS EQUIPMENT	REPAIR/MAINTENANCE		
		I-15-211904	201-45210-42500	REPAIR & MAIN FUEL STRAINER,FUEL FILTER,POWE	183994	183.84
	PROJ: H50-42500		PARKS EQUIPMENT	REPAIR/MAINTENANCE		
		I-15-212367	201-45210-42500	REPAIR & MAIN BATTERY ASMS	183994	83.08
	PROJ: H50-42500		PARKS EQUIPMENT	REPAIR/MAINTENANCE		
		I-15-212559	201-45210-42500	REPAIR & MAIN TLAMP ASM,BATTERY CLEAN SPRAY	183994	172.79
	PROJ: H50-42500		PARKS EQUIPMENT	REPAIR/MAINTENANCE		
01-01202	TK ELECTRIC					
		I-14690	201-45210-42500	REPAIR & MAIN REINSTALL OVERHEAD POWER LINES	184005	395.24
	PROJ: H66-42500		CAMP ARROYA	REPAIR/MAINTENANCE		
01-01325	MEYERS OIL CO					
		I-12497	201-45210-42610	GAS & FUEL REGULAR,DIESEL FUEL #2R	183944	1,643.73
	PROJ: H50-42610		PARKS EQUIPMENT	GAS/FUEL		
01-01590	MCLEOD'S PRINTING					
		I-41270	201-45210-42600	SUPPLIES & MA TIME CARDS	183939	170.00
	PROJ: H51-42600		PARK SHOP	SUPPLIES/MATERIALS		
01-01830	NORTHWESTERN ENERGY & C					
		I-2581647-1-7/20	201-45210-42800	UTILITIES 950 INDIAN VILLAGE RD	183958	53.03
	PROJ: H77-42800		SPORTSMANS CLUB	UTILITIES		
		I-2582639-7-7/20	201-45210-42800	UTILITIES PATTON YOUNG	183958	78.93
	PROJ: H87-42800		PATTON YOUNG	UTILITIES		
		I-2748483-1-7/20	201-45210-42800	UTILITIES ACCESS LOT METER	183958	10.16
	PROJ: H79-42800		LAKE PARK ACCESS AREAS	UTILITIES		
		I-2967874-5-7/20	201-45210-42800	UTILITIES 3100 INDIAN VILLAGE RD	183958	46.67
	PROJ: H65-42800		AMPHITHEATER	UTILITIES		

7/29/2020 1:45 PM  
 PACKET: 05500 8/3/20 MEETING  
 VENDOR SET: 01  
 FUND : 201 PARK FUND  
 DEPARTMENT: 5210 PARKS  
 BUDGET TO USE: CB-CURRENT BUDGET

BANK: APBNK

VENDOR	NAME	ITEM #	G/L ACCOUNT NAME	DESCRIPTION	CHECK#	AMOUNT
01-01830	NORTHWESTERN ENERGY & C		continued			
		I-2997129-8-7/20	201-45210-42800	UTILITIES 800 E 11TH AVE	183958	23.03
	PROJ: H60-42800		NORTHRIDGE PARK	UTILITIES		
01-02679	MENARD'S INC					
		I-581	201-45210-42600	SUPPLIES & MA CEDAR POST,CEDAR RAIL	183940	88.92
	PROJ: H66-42600		CAMP ARROYA	SUPPLIES/MATERIALS		
		I-773	201-45210-42600	SUPPLIES & MA CEDAR POST	183940	11.99
	PROJ: H66-42600		CAMP ARROYA	SUPPLIES/MATERIALS		
		I-838	201-45210-42600	SUPPLIES & MA WEED CONTROL	183940	149.94
	PROJ: H56-42600		HITCHCOCK PARK	SUPPLIES/MATERIALS		
01-02804	TMA STORES					
		I-74813	201-45210-42500	REPAIR & MAIN GOLF CART TIRE	184006	51.50
	PROJ: H50-42500		PARKS EQUIPMENT	REPAIR/MAINTENANCE		
		I-74865	201-45210-42500	REPAIR & MAIN TUBE	184006	19.18
	PROJ: H50-42500		PARKS EQUIPMENT	REPAIR/MAINTENANCE		
01-02880	THUNE TRUE VALUE HARDWA					
		I-A441055	201-45210-42600	SUPPLIES & MA HARDWARE	184001	7.08
	PROJ: H50-42600		PARKS EQUIPMENT	SUPPLIES/MATERIALS		
		I-B213854	201-45210-42600	SUPPLIES & MA LEAF RAKE	184001	16.99
	PROJ: H50-42600		PARKS EQUIPMENT	SUPPLIES/MATERIALS		
		I-B214649	201-45210-42600	SUPPLIES & MA LAG SCREW EYE	184001	1.49
	PROJ: H50-42600		PARKS EQUIPMENT	SUPPLIES/MATERIALS		
		I-B215682	201-45210-42600	SUPPLIES & MA PIST DRAIN AUGER	184001	24.99
	PROJ: H50-42600		PARKS EQUIPMENT	SUPPLIES/MATERIALS		
01-03107	BBBB'S OF SOUTH DAKOTA					
		I-42477	201-45210-42600	SUPPLIES & MA PLANKS	183872	121.34
	PROJ: H67-42600		DAY CAMP	SUPPLIES/MATERIALS		
01-03771	INDEPENDENT VIKING GLAS					
		I-37555	201-45210-42600	SUPPLIES & MA CLOSER ARM	183922	42.00
	PROJ: H74-42600		PUBLIC BEACH	SUPPLIES/MATERIALS		
01-08130	C & B OPERATIONS LLC					
		I-10800967	201-45210-42500	REPAIR & MAIN RING,O-RINGS,PIN CONTAC,HOSE,	183879	344.59
	PROJ: H50-42500		PARKS EQUIPMENT	REPAIR/MAINTENANCE		
		I-10818374	201-45210-42500	REPAIR & MAIN REFRIGERANT HOSE	183879	225.57
	PROJ: H50-42500		PARKS EQUIPMENT	REPAIR/MAINTENANCE		
01-09058	SITEONE LANDSCAPE SUPPL					
		I-101028676-001	201-45210-42600	SUPPLIES & MA DECODER W/CONTROLLERS	183990	1,455.24
	PROJ: H56-42600		HITCHCOCK PARK	SUPPLIES/MATERIALS		
		I-101387973-001	201-45210-42600	SUPPLIES & MA GORILLA NUTS,ADJ ROTOR	183990	555.97
	PROJ: H56-42600		HITCHCOCK PARK	SUPPLIES/MATERIALS		
01-09993	TOM RIDDLE					

7/29/2020 1:45 PM  
 PACKET: 05500 8/3/20 MEETING  
 VENDOR SET: 01  
 FUND : 201 PARK FUND  
 DEPARTMENT: 5210 PARKS  
 BUDGET TO USE: CB-CURRENT BUDGET

REGULAR DEPARTMENT PAYMENT REGISTER

BANK: APBNK

VENDOR	NAME	ITEM #	G/L ACCOUNT NAME	DESCRIPTION	CHECK#	AMOUNT
01-09993	TOM RIDDLE		continued			
		I-72120	201-45210-42604	TREES	RE-TREE PROGRAM	183972 200.00
	PROJ: H52-42604	FORESTRY		TREES		
01-09995	BILL SCHMITZ					
		I-12612	201-45210-42604	TREES	RE-TREE PROGRAM	183981 100.00
	PROJ: H52-42604	FORESTRY		TREES		
DEPARTMENT 5210 PARKS					TOTAL:	6,606.28

07/29/2020 1:45 PM  
 PACKET: 05500 8/3/20 MEETING  
 VENDOR SET: 01  
 FUND : 201 PARK FUND  
 DEPARTMENT: 5220 SUPERVISION  
 BUDGET TO USE: CB-CURRENT BUDGET

REGULAR DEPARTMENT PAYMENT REGISTER

BANK: APBNK

VENDOR	NAME	ITEM #	G/L ACCOUNT NAME	DESCRIPTION	CHECK#	AMOUNT
01-01590	MCLEOD'S PRINTING	I-41270	201-45220-42600	SUPPLIES & MA TIME CARDS	183939	170.00
01-09509	INNOVATIVE OFFICE SOLUT	I-3034943	201-45220-42600	SUPPLIES & MA PAPER	183924	31.09
01-09992	MOTION SPORTS AND SAFET	I-2020-07-09	201-45220-42500	REPAIR & MAIN RED SKATE AID	183956	1,430.00
					DEPARTMENT 5220 SUPERVISION	TOTAL: 1,631.09
					FUND 201 PARK FUND	TOTAL: 46,626.44

7/29/2020 1:45 PM  
 PACKET: 05500 8/3/20 MEETING  
 VENDOR SET: 01  
 FUND : 211 ENTERTAINMENT TAX  
 DEPARTMENT: 6311 ENTERTAINMENT TAX  
 BUDGET TO USE: CB-CURRENT BUDGET

REGULAR DEPARTMENT PAYMENT REGISTER

BANK: APBNK

VENDOR	NAME	ITEM #	G/L ACCOUNT NAME	DESCRIPTION	CHECK#	AMOUNT
01-00469	GEOTEK ENGINEERING INC.	I-19L21B2	211-46311-42963	COMMUNITY PRO CORN PALACE-PHASE II	183912	708.00
01-01193	KROHMER PLUMBING INC	I-49340	211-46311-42963	COMMUNITY PRO FIND & REPAIR LEAK @ C.P. PLAZ	183935	4,676.50
01-01388	PUETZ CORPORATION	I-2019-48 P.E. #8	211-46311-42963	COMMUNITY PRO 2019-48 P.E. #8	183968	72,940.42
01-09187	CONFLUENCE, INC	I-2019-48 P.E. #11	211-46311-42963	COMMUNITY PRO 2019-48 P.E. #11	183890	703.04
					DEPARTMENT 6311 ENTERTAINMENT TAX	TOTAL: 79,027.96
					FUND 211 ENTERTAINMENT TAX	TOTAL: 79,027.96



PACKET: 05500 8/3/20 MEETING

VENDOR SET: 01

FUND : 214 E-911 EMERGENCY

DEPARTMENT: 3500 E-911

BANK: APBNK

BUDGET TO USE: CB-CURRENT BUDGET

VENDOR	NAME	ITEM #	G/L ACCOUNT NAME	DESCRIPTION	CHECK#	AMOUNT
01-02840	TESSIER'S INC					
		I-TES047739	214-43500-42500	REPAIRS & MAI PLANNED MAINTENANCE SERVICE	183998	87.30
01-08252	CORPORATE TRANSLATION S					
		I-168658	214-43500-42200	PROFESSIONAL LANGUAGE TRANSLATION	183894	2.28
01-08739	KROGMAN CONSTRUCTION LL					
		I-2020-16 P.E. #1	214-43500-43300	ROOF 2020-16 P.E. #1	183934	6,498.65
01-09488	STITCHTOGETHER					
		I-70720	214-43500-42650	UNIFORMS HEM PANTS	183992	12.00
01-09633	STAPLES					
		I-3449510915	214-43500-42600	SUPPLIES & MA PROF PRT ROLLS	183991	12.34
					DEPARTMENT 3500 E-911	TOTAL: 6,612.57
					FUND 214 E-911 EMERGENCY	TOTAL: 6,612.57

PACKET: 05500 8/3/20 MEETING

VENDOR SET: 01

FUND : 218 COMMUNITY SERVICES

DEPARTMENT: 5140 MVP

BANK: APBNK

BUDGET TO USE: CB-CURRENT BUDGET

VENDOR	NAME	ITEM #	G/L ACCOUNT NAME	DESCRIPTION	CHECK#	AMOUNT
01-07987	AT&T MOBILITY	I-7232020	218-45140-42800	UTILITIES ACCT #287298243882	183867	13.14
DEPARTMENT 5140 MVP					TOTAL:	13.14

PACKET: 05500 8/3/20 MEETING

VENDOR SET: 01

FUND : 218 COMMUNITY SERVICES

DEPARTMENT: 5150 PALACE TRANSIT

BANK: APBNK

BUDGET TO USE: CB-CURRENT BUDGET

VENDOR	NAME	ITEM #	G/L ACCOUNT NAME	DESCRIPTION	CHECK#	AMOUNT
01-01199	STURDEVANT'S AUTO PARTS					
		I-15-212447	218-45150-42500	REPAIR AND MA BATTERY,CLIPS	183994	267.06
	PROJ: E01-MAINT	5311-FY18/19		Maintenance/Repairs		
01-01202	TK ELECTRIC					
		I-14850	218-45150-42511	GARAGE REPAIR LIGHT REPAIR @ BUS BARN	184005	71.43
	PROJ: E01-GAMAJNT	5311-FY18/19		Garage Maintenance		
01-02495	SCOTT SUPPLY CO.					
		I-63307P	218-45150-42500	REPAIR AND MA RING	183984	2.00
	PROJ: E01-MAINT	5311-FY18/19		Maintenance/Repairs		
01-04293	JCL SOLUTIONS					
		I-1212725	218-45150-42600	SUPPLIES & MA FOGGERS	183928	90.00
	PROJ: E01-GASUP	5311-FY18/19		Garage Supplies		
01-06069	SHI INTERNATIONAL CORP					
		I-B11999707	218-45150-42600	SUPPLIES & MA OFFICE PROGRAM	183989	135.30
	PROJ: E01-OFFSUP	5311-FY18/19		Office Supplies		
01-06713	SHAH SOFTWARE INC					
		I-2020269	218-45150-42920	COMPUTER SOFT ANNUAL SOFTWARE 9/20-8/21	183987	22,424.00
	PROJ: E01-SHAH	5311-FY18/19		Tablet/Radio Contract		
01-07326	EMERGENCY EDUCATION ASS					
		I-145752	218-45150-42700	TRAVEL, CONFE NSC CPR/AED COURSE	183905	300.00
	PROJ: E01-TRA	5311-FY18/19		Travel/Training		
01-07987	AT&T MOBILITY					
		I-7232020	218-45150-42800	UTILITIES ACCT #287298243882	183867	47.77
	PROJ: E01-OFFUT	5311-FY18/19		Office Utilities		
		I-7232020	218-45150-42920	COMPUTER SOFT ACCT #287298243882	183867	809.56
	PROJ: E01-SHAH	5311-FY18/19		Tablet/Radio Contract		
01-09633	STAPLES					
		I-3450868793	218-45150-42600	SUPPLIES & MA ASPIRIN,BURN CREAM,TOTES	183991	17.76
	PROJ: E01-GASUP	5311-FY18/19		Garage Supplies		
01-09703	AMAZON CAPITAL SERVICES					
		I-1NT4-C1X4-6M9Y	218-45150-42600	SUPPLIES & MA THERMOMETERS,MASKS	183860	48.54
	PROJ: E01-OFFSUP	5311-FY18/19		Office Supplies		
		I-1VJX-JMQQ-479X	218-45150-42600	SUPPLIES & MA MONITOR MOUNT,KEYBOARD	183860	118.72
	PROJ: E01-OFFSUP	5311-FY18/19		Office Supplies		
DEPARTMENT 5150 PALACE TRANSIT					TOTAL:	24,332.14

7/29/2020 1:45 PM  
 PACKET: 05500 8/3/20 MEETING  
 VENDOR SET: 01  
 FUND : 218 COMMUNITY SERVICES  
 DEPARTMENT: 5180 JVCC  
 BUDGET TO USE: CB-CURRENT BUDGET

REGULAR DEPARTMENT PAYMENT REGISTER

BANK: APBNK

VENDOR	NAME	ITEM #	G/L ACCOUNT NAME	DESCRIPTION	CHECK#	AMOUNT
01-04293	JCL SOLUTIONS					
		I-1212725	218-45180-42600	SUPPLIES & MA FOGGERS	183928	877.50
01-07987	AT&T MOBILITY					
		I-7232020	218-45180-42800	UTILITIES ACCT #287298243882	183867	13.14
					DEPARTMENT 5180 JVCC	TOTAL: 890.64
					FUND 218 COMMUNITY SERVICES	TOTAL: 25,235.92

PACKET: 05500 8/3/20 MEETING

VENDOR SET: 01

FUND : 219 NUTRITION

DEPARTMENT: 5140 NUTRITION

BANK: APBNK

BUDGET TO USE: CB-CURRENT BUDGET

VENDOR	NAME	ITEM #	G/L ACCOUNT NAME	DESCRIPTION	CHECK#	AMOUNT
01-01193	KROHMER PLUMBING INC	I-49905	219-45140-42500	REPAIR & MAIN TOILET REPAIRS @ JVCC	183935	553.44
01-04293	JCL SOLUTIONS	I-1212444	219-45140-42600	SUPPLIES & MA SANITIZER & STAND	183928	203.95
01-07987	AT&T MOBILITY	I-7232020	219-45140-42800	UTILITIES ACCT #287298243882	183867	13.15
01-09069	BIG DADDY D'S INC	I-516	219-45140-42911	CONTRACT SERV MILK, PLATES, FOAM CONTAINERS	183875	89.70
		I-516	219-45140-42605	MEAL SUPPLIES MILK, PLATES, FOAM CONTAINERS	183875	137.60
		I-521	219-45140-42911	CONTRACT SERV MITCHELL MEALS 7/13-17	183875	2,121.00
		I-522	219-45140-42911	CONTRACT SERV MITCHELL MEALS 7/20-24	183875	2,042.25
		I-523	219-45140-42911	CONTRACT SERV MILK	183875	67.92
		I-524	219-45140-42605	MEAL SUPPLIES PLATES, FOAM CONTAINERS	183875	137.60
01-09403	TRADITIONS PREPARED MEA	I-CDIM/1095028	219-45140-42911	CONTRACT SERV FROZEN MEALS	184008	1,584.00
01-09633	STAPLES	I-3450868792	219-45140-42605	MEAL SUPPLIES PLASTIC CUTLERY	183991	45.88
01-09703	AMAZON CAPITAL SERVICES	I-1NT4-C1X4-6M9Y	219-45140-42600	SUPPLIES & MA THERMOMETERS, MASKS	183860	48.53
DEPARTMENT 5140 NUTRITION					TOTAL:	7,045.02
FUND 219 NUTRITION					TOTAL:	7,045.02

PACKET: 05500 8/3/20 MEETING

VENDOR SET: 01

FUND : 602 WATER

DEPARTMENT: 3330 WATER TREATMENT PLANT

BANK: APBNK

BUDGET TO USE: CB-CURRENT BUDGET

VENDOR	NAME	ITEM #	G/L ACCOUNT NAME	DESCRIPTION	CHECK#	AMOUNT
01-00525	DAKOTA PUMP INC					
		I-13640	602-43330-42500	REPAIR & MAIN PUMP #4 FLOW METER SETUP	183898	102.04
		I-13641	602-43330-42500	REPAIR & MAIN B-Y FLOW CONTROL REPAIRS	183898	127.35
01-01324	MALLOY ELECTRIC BEARING					
		I-6304347	602-43330-42600	SUPPLIES & MA MOTOR OIL	183938	28.33
01-02679	MENARD'S INC					
		I-1282-7/22/20	602-43330-42600	SUPPLIES & MA ROOFING NAILS,9V BATTERIES	183940	79.74
01-07598	AQUA-PURE INC					
		I-MITSD2007	602-43330-42620	CHEMICAL SERV JUNE SERVICE,CHEMICALS	183865	1,562.50
DEPARTMENT 3330 WATER TREATMENT PLANT					TOTAL:	1,899.96

PACKET: 05500 8/3/20 MEETING  
 VENDOR SET: 01  
 FUND : 602 WATER  
 DEPARTMENT: 3340 WATER DISTRIBUTION  
 BUDGET TO USE: CB-CURRENT BUDGET

BANK: APBNK

VENDOR	NAME	ITEM #	G/L ACCOUNT NAME	DESCRIPTION	CHECK#	AMOUNT
01-00356	QUALIFIED PRESORT					
		I-2279-5708	602-43340-42660	POSTAGE MAILING SERVICE	183969	32.70
01-00403	CITY OF SIOUX FALLS					
		I-18061	602-43340-42550	SHUT OFF REPA BACTERIA WATER TESTS	183886	29.00
01-00424	RUNNINGS SUPPLY INC					
		I-1049787	602-43340-42600	SUPPLIES & MA DRILL BITS,SHOP TOWELS,WD-40	183976	37.45
01-00717	H & W CONTRACTING LLC					
		I-2019-22 P.E. #13	602-43340-43323	SANBORN-8TH T 2019-22 P.E. #13	183917	85,099.44
01-01199	STURDEVANT'S AUTO PARTS					
		I-15-212916	602-43340-42600	SUPPLIES & MA BATTERY ASM	183994	130.49
01-01830	NORTHWESTERN ENERGY & C					
		I-2941237-6-7/20	602-43340-42800	UTILITIES 1416 E SPRUCE ST	183958	19.11
01-02470	CORE & MAIN LP					
		I-M632882	602-43340-42525	HYDRANT REPAI COUPLINGS,PIPE,RISERS,HYD EXT	183891	3,398.45
		I-M643829	602-43340-43409	WATER METERS TOUCHPADS	183891	343.00
		I-M651537	602-43340-42600	SUPPLIES & MA TAP HEX DRILL ROD	183891	462.98
		I-M652277	602-43340-43409	WATER METERS METERS	183891	13,500.00
01-02480	SCHMUCKER PAUL & NOHR					
		I-2018-39 P.E. #80	602-43340-43346	EAST CENTRAL 2018-39 P.E. #80	183982	686.25
		I-2019-22 P.E. #54	602-43340-43323	SANBORN-8TH T 2019-22 P.E. #54	183982	533.75
		I-2019-39 P.E. #28	602-43340-43346	EAST CENTRAL 2019-39 P.E. #28	183982	640.00
01-02495	SCOTT SUPPLY CO.					
		I-63441P	602-43340-42600	SUPPLIES & MA COUPLING	183984	74.00
01-02679	MENARD'S INC					
		I-1372	602-43340-42600	SUPPLIES & MA BOILER DRAINS	183940	17.98
01-02790	SUN GOLD SPORTS					
		I-5104	602-43340-42650	UNIFORMS SCREEN PRINTED LOGOS	183997	30.00
01-06294	BROSZ ENGINEERING INC					
		I-2019-22 P.E. #7	602-43340-43323	SANBORN-8TH T 2019-22 P.E. #7	183878	13,620.00
01-08307	TOP GRADE CONCRETE					
		I-2019-4 P.E. #10	602-43340-42510	WATER PROJ SI 2019-4 P.E. #10	184007	1,223.00
01-08321	MENNING BACKHOE					
		I-2018-39 P.E. #11	602-43340-43346	EAST CENTRAL 2018-39 P.E. #11	183942	8,400.52
01-08466	CHR SOLUTIONS INC					
		I-751330	602-43340-42660	POSTAGE JUNE BILLING	183884	668.55

PACKET: 05500 8/3/20 MEETING

VENDOR SET: 01

FUND : 602 WATER

DEPARTMENT: 3340 WATER DISTRIBUTION

BANK: APBNK

BUDGET TO USE: CB-CURRENT BUDGET

VENDOR	NAME	ITEM #	G/L ACCOUNT NAME	DESCRIPTION	CHECK#	AMOUNT
01-08466	CHR SOLUTIONS INC		continued			
		I-751330	602-43340-42910	BILLING OFFIC JUNE BILLING	183884	298.89
					DEPARTMENT 3340 WATER DISTRIBUTION	TOTAL: 129,245.56
					FUND 602 WATER	TOTAL: 131,145.52



7/29/2020 1:45 PM  
PACKET: 05500 8/3/20 MEETING  
VENDOR SET: 01  
FUND : 604 SEWER  
DEPARTMENT: 3200 WASTE WATER TREATMENT  
BUDGET TO USE: CB-CURRENT BUDGET

REGULAR DEPARTMENT PAYMENT REGISTER

BANK: APBNK

VENDOR	NAME	ITEM #	G/L ACCOUNT NAME	DESCRIPTION	CHECK#	AMOUNT
01-00356	QUALIFIED PRESORT					
		I-2279-5708	604-43200-42660	POSTAGE MAILING SERVICE	183969	27.50
01-00424	RUNNINGS SUPPLY INC					
		I-1040705	604-43200-42600	SUPPLIES TORDON RTU BRUSH KILLER	183976	34.98
01-03014	ADVANCE AUTO PARTS					
		I-5761020655832	604-43200-42600	SUPPLIES LEATHER TR SWC GRY	183858	22.99
01-08466	CHR SOLUTIONS INC					
		I-751330	604-43200-42660	POSTAGE JUNE BILLING	183884	668.56
					DEPARTMENT 3200 WASTE WATER TREATMENT TOTAL:	754.03

PACKET: 05500 8/3/20 MEETING

VENDOR SET: 01

FUND : 604 SEWER

DEPARTMENT: 3210 WASTE WATER IND PRETREAT

BANK: APBNK

BUDGET TO USE: CB-CURRENT BUDGET

VENDOR	NAME	ITEM #	G/L ACCOUNT NAME	DESCRIPTION	CHECK#	AMOUNT
01-02323	WEF	I-17523451-2021	604-43210-42700	TRAVEL CONFER RENEWAL-J VERMEULEN	184017	155.00
DEPARTMENT 3210 WASTE WATER IND PRETREAT TOTAL:						155.00

PACKET: 05500 8/3/20 MEETING  
 VENDOR SET: 01  
 FUND : 604 SEWER  
 DEPARTMENT: 3250 WASTE WATER COLLECTION  
 BUDGET TO USE: CB-CURRENT BUDGET

BANK: APBNK

VENDOR	NAME	ITEM #	G/L ACCOUNT NAME	DESCRIPTION	CHECK#	AMOUNT
01-00210	BAILEY METAL FABRICATOR	I-55325	604-43250-42500	REPAIRS REPAIRS	183870	39.99
01-00424	RUNNINGS SUPPLY INC	I-1044732	604-43250-42600	SUPPLIES ENGINE OIL,LINE	183976	28.93
		I-1045772	604-43250-42600	SUPPLIES WIRE,CABLE TIES	183976	159.18
01-00717	H & W CONTRACTING LLC	I-2019-22 P.E. #13	604-43250-43334	SANBORN-8TH T 2019-22 P.E. #13	183917	151,134.51
01-01830	NORTHWESTERN ENERGY & C	I-2572870-0-7/20	604-43250-42800	UTILITIES 1511 N COMMERCE	183958	162.46
		I-2582739-5-7/20	604-43250-42800	UTILITIES 1300 W NORWAY AVE	183958	206.02
		I-2809477-9-7/20	604-43250-42800	UTILITIES 1423 COUNTRY DR	183958	155.74
01-02480	SCHMUCKER PAUL & NOHR	I-2018-39 P.E. #78	604-43250-43315	EAST CENTRAL 2018-39 P.E. #78	183982	2,360.75
		I-2019-22 P.E. #53	604-43250-43334	SANBORN-8TH T 2019-22 P.E. #53	183982	517.82
		I-2019-22 P.E. #55	604-43250-43334	SANBORN-8TH T 2019-22 P.E. #55	183982	19.13
01-02939	DEPARTMENT OF ENVIRONME	I-2020-30	604-43250-43345	LOMA LINDA UT 1800-1900 BLK LOMA LINDA DR SA	183900	100.00
01-06294	BROSZ ENGINEERING INC	I-2019-22 P.E. #8	604-43250-43334	SANBORN-8TH T 2019-22 P.E #8	183878	9,540.00
01-06656	PREMIER PEST CONTROL	I-16018	604-43250-42916	NUISANCE ABAT JULY PEST CONTROL @ LAGOONS	183967	75.00
01-08298	DETCO	I-311440	604-43250-42600	SUPPLIES GERM-A-CIDE	183901	244.26
01-08307	TOP GRADE CONCRETE	I-2019-4 P.E. #10	604-43250-42500	REPAIRS 2019-4 P.E. #10	184007	390.00
01-08321	MENNING BACKHOE	I-2018-39 P.E. #11	604-43250-43315	EAST CENTRAL 2018-39 P.E. #11	183942	10,316.20
01-08466	CHR SOLUTIONS INC	I-751330	604-43250-42910	BILLING OFFIC JUNE BILLING	183884	298.90
					DEPARTMENT 3250 WASTE WATER COLLECTION TOTAL:	175,748.89
					FUND 604 SEWER TOTAL:	176,657.92

PACKET: 05500 8/3/20 MEETING

VENDOR SET: 01

FUND : 612 SANITATION

DEPARTMENT: 3220 RECYCLING PROGRAM

BANK: APBNK

BUDGET TO USE: CB-CURRENT BUDGET

VENDOR	NAME	ITEM #	G/L ACCOUNT NAME	DESCRIPTION	CHECK#	AMOUNT
01-01830	NORTHWESTERN ENERGY & C					
		I-3750165-7-6/20	612-43220-42800	UTILITIES 2801 E HAVENS ST	183958	145.00
		I-3750165-7-7/20	612-43220-42800	UTILITIES 2801 E HAVENS ST	183958	135.93
01-09891	MILLENNIUM RECYCLING					
		I-475045	612-43220-42200	CONTRACT-MILL SINGLE STREAM FEE-JUNE	183950	2,767.80
DEPARTMENT 3220 RECYCLING PROGRAM					TOTAL:	3,048.73

7/29/2020 1:45 PM  
 PACKET: 05500 8/3/20 MEETING  
 VENDOR SET: 01  
 FUND : 612 SANITATION  
 DEPARTMENT: 3230 WASTE COLLECTION  
 BUDGET TO USE: CB-CURRENT BUDGET

BANK: APBNK

VENDOR	NAME	ITEM #	G/L ACCOUNT NAME	DESCRIPTION	CHECK#	AMOUNT
01-00210	BAILEY METAL FABRICATOR	I-55203	612-43230-42600	SUPPLIES REPAIRS	183870	86.65
01-00262	GREAT WESTERN TIRE CO	I-1-562971	612-43230-42500	REPAIRS TIRES	183915	1,620.68
01-00356	QUALIFIED PRESORT	I-2279-5708	612-43230-42660	POSTAGE MAILING SERVICE	183969	26.40
01-02790	SUN GOLD SPORTS	I-5092	612-43230-42650	UNIFORMS SHIRTS & COVERALL W/LOGO, JEANS	183997	39.28
01-08466	CHR SOLUTIONS INC	I-751330	612-43230-42660	POSTAGE JUNE BILLING	183884	668.56
		I-751330	612-43230-42910	BILLING OFFIC JUNE BILLING	183884	298.90
01-09453	SANITATION PRODUCTS INC	I-76443	612-43230-42600	SUPPLIES JOYSTICK W/PADDLE	183980	1,399.30
01-09703	AMAZON CAPITAL SERVICES	I-19CR-C6X6-GT3D	612-43230-42600	SUPPLIES FACE GUARDS	183860	21.98
DEPARTMENT 3230 WASTE COLLECTION					TOTAL:	4,161.75

PACKET: 05500 8/3/20 MEETING

VENDOR SET: 01

FUND : 612 SANITATION

DEPARTMENT: 3240 LANDFILL

BANK: APBNK

BUDGET TO USE: CB-CURRENT BUDGET

VENDOR	NAME	ITEM #	G/L ACCOUNT NAME	DESCRIPTION	CHECK#	AMOUNT
01-00356	QUALIFIED PRESORT					
		I-2279-5708	612-43240-42600	SUPPLIES MAILING SERVICE	183969	27.95
01-00424	RUNNINGS SUPPLY INC					
		I-1040734	612-43240-42600	SUPPLIES PUMP ROTARY HAND	183976	49.99
01-00469	GEOTEK ENGINEERING INC.					
		I-2020-28 P.E. #3	612-43240-42205	MONITOR GROUN 2020-28 P.E. #3	183912	1,096.00
		I-2020-29 P.E. #3	612-43240-42550	LAB FEES 2020-29 P.E. #3	183912	1,851.00
01-01325	MEYERS OIL CO					
		I-31561	612-43240-42600	SUPPLIES DTE	183944	154.10
01-02790	SUN GOLD SPORTS					
		I-5092	612-43240-42650	UNIFORMS SHIRTS & COVERALL W/LOGO, JEANS	183997	315.45
01-06527	AMERICAN FENCE COMPANY					
		I-26634	612-43240-42500	REPAIR AND MA FURNISH/INSTALL FENCE	183861	4,303.07
01-09509	INNOVATIVE OFFICE SOLUT					
		I-3033573	612-43240-42600	SUPPLIES LEGAL PADS,MECH PENCILS,DESK T	183924	45.40
					DEPARTMENT 3240 LANDFILL	TOTAL: 7,842.96
					FUND 612 SANITATION	TOTAL: 15,053.44

7/29/2020 1:45 PM  
 PACKET: 05500 8/3/20 MEETING  
 VENDOR SET: 01  
 FUND : 613 CORN PALACE  
 DEPARTMENT: N/A NON-DEPARTMENTAL  
 BUDGET TO USE: CB-CURRENT BUDGET

REGULAR DEPARTMENT PAYMENT REGISTER

BANK: APBNK

VENDOR	NAME	ITEM #	G/L ACCOUNT NAME	DESCRIPTION	CHECK#	AMOUNT
01-09983	ELIZABETH DREIER					
		I-71620	613-34651	FESTIVAL-TICK WHISKEY MEYERS TICKETS REFUND	183904	96.00
01-09986	MALISA JONES					
		I-61520	613-34651	FESTIVAL-TICK WHISKEY MEYERS TICKETS REFUND	183930	152.00
01-09987	CHAD ANDERSON					
		I-72120	613-34651	FESTIVAL-TICK WHISKEY MEYERS TICKETS REFUND	183863	192.00
01-09988	WESTON WATERS					
		I-72120	613-34651	FESTIVAL-TICK WHISKEY MEYERS TICKETS REFUND	184016	98.00
01-09990	JASON HOLFORTY					
		I-72220	613-34651	FESTIVAL-TICK WHISKEY MEYER TICKETS REFUND	183920	76.00
01-09997	ANDI PAUL					
		I-92.00	613-34651	FESTIVAL-TICK WHISKEY MEYER TICKETS REFUND	183964	92.00
01-09998	JARED ROLSTON					
		I-72720	613-34651	FESTIVAL-TICK WHISKEY MYERS TICKETS REFUND	183973	152.00
01-09999	SHELBEE SCHULTZ					
		I-72720	613-34651	FESTIVAL-TICK WHISKEY MEYERS TICKETS REFUND	183983	70.00
01-10000	CARI MEYER TERVEEN					
		I-72820	613-34651	FESTIVAL-TICK WHISKEY MEYER TICKETS REFUND	183943	70.00
01-10001	KENDRA YAUNICK					
		I-72320	613-34651	FESTIVAL-TICK WHISKEY MEYERS TICKETS REFUND	184023	76.00
					DEPARTMENT	
					NON-DEPARTMENTAL	
					TOTAL:	1,074.00

7/29/2020 1:45 PM  
 PACKET: 05500 8/3/20 MEETING  
 VENDOR SET: 01  
 FUND : 613 CORN PALACE  
 DEPARTMENT: 5650 CORN PALACE  
 BUDGET TO USE: CB-CURRENT BUDGET

BANK: APBNK

VENDOR	NAME	ITEM #	G/L ACCOUNT NAME	DESCRIPTION	CHECK#	AMOUNT
01-00356	QUALIFIED PRESORT					
		I-2279-5708	613-45650-42660	SHIPPING/POST MAILING SERVICE	183969	0.55
01-00428	CARQUEST AUTO PARTS INC					
		I-4977-227006	613-45650-42600	SUPPLIES & MA GAGE,REG	183880	68.88
01-00462	COCA COLA BOTTLING CO					
		I-2526919	613-45650-42610	COST OF GOODS PLST CUPS,POP	183887	418.25
		I-2540265	613-45650-42610	COST OF GOODS DASANI WATER,POP,FRUIT DRINK	183887	778.95
01-00712	NAPA AUTO PARTS					
		I-729013	613-45650-42500	REPAIRS & MAI 10W40	183957	27.48
	PROJ: X04-42500	DECORATING		REPAIRS/MAINTENANCE		
01-00974	HILLYARD/SIOUX FALLS					
		I-603943371	613-45650-42500	REPAIRS & MAI RUBBERBANDS, TOP CLEAN	183919	137.60
01-01102	KORN/KQRN RADIO					
		I-20070175	613-45650-42320	ADVERTISING/P ACCT #27377-C.P.	183933	187.20
		I-20070176	613-45650-42320	ADVERTISING/P ACCT #27377-C.P.	183933	199.68
01-01199	STURDEVANT'S AUTO PARTS					
		I-15-211450	613-45650-42500	REPAIRS & MAI FILTERS	183994	60.45
	PROJ: X04-42500	DECORATING		REPAIRS/MAINTENANCE		
01-01598	DOUG GREENWAY					
		I-1-033	613-45650-42650	UNIFORMS SHIRTS W/LOGO	183916	74.00
01-02560	PEPSI COLA COMPANY					
		I-97697958	613-45650-42610	COST OF GOODS POP	183965	83.25
		I-97698479	613-45650-42610	COST OF GOODS POP	183965	166.50
01-02679	MENARD'S INC					
		I-1081	613-45650-42600	SUPPLIES & MA BUNGEE, SHACKLE SPA FGD, SPR SNA	183940	21.20
		I-171	613-45650-42600	SUPPLIES & MA GLOVES	183940	34.95
	PROJ: X04-42600	DECORATING		SUPPLIES		
		I-323	613-45650-42500	REPAIRS & MAI TAPE, SCREWS, BALLASTS, PAINT,	183940	163.11
01-02790	SUN GOLD SPORTS					
		I-5030	613-45650-42650	UNIFORMS T-SHIRTS W/LOGO	183997	275.00
01-02811	JONES SUPPLIES					
		C-125650	613-45650-42600	SUPPLIES & MA CREDIT	183931	25.44-
		I-125442	613-45650-42600	SUPPLIES & MA BATH TISSUE, CLEANER	183931	174.03
		I-125482	613-45650-42600	SUPPLIES & MA CLOROX REMOVER	183931	57.38
		I-125554	613-45650-42600	SUPPLIES & MA AA BATTERIES	183931	40.80
		I-125630	613-45650-42500	REPAIRS & MAI LINERS, ROLL TOWELS, BATH TISSUE	183931	333.59
		I-125636	613-45650-42500	REPAIRS & MAI DISH DETERGENT, SANITIZER, ROLL	183931	268.61
		I-125649	613-45650-42600	SUPPLIES & MA CLEANER	183931	28.96



7/29/2020 1:45 PM  
 PACKET: 05500 8/3/20 MEETING  
 VENDOR SET: 01  
 FUND : 613 CORN PALACE  
 DEPARTMENT: 5650 CORN PALACE  
 BUDGET TO USE: CB-CURRENT BUDGET

BANK: APBNK

VENDOR	NAME	ITEM #	G/L ACCOUNT NAME	DESCRIPTION	CHECK#	AMOUNT
01-02811	JONES SUPPLIES		continued			
		I-125695	613-45650-42610	COST OF GOODS FOIL SHEETS	183931	65.00
01-02880	THUNE TRUE VALUE HARDWA					
		I-B213767	613-45650-42500	REPAIRS & MAI SCRAPER REPL BLADE	184001	3.49
01-03267	WALMART COMMUNITY/SYNCB					
		I-423	613-45650-42600	SUPPLIES & MA CANOPY UPC	184015	158.00
01-03700	CORE-MARK MIDCONTINENT					
		I-7734150	613-45650-42610	COST OF GOODS C.P. CONCESSION PRODUCT	183892	978.13
		I-7749779	613-45650-42610	COST OF GOODS C.P. CONCESSION PRODUCT	183892	899.58
01-04352	UPS STORE #4227					
		I-15064	613-45650-42660	SHIPPING/POST SHIPPING	184010	25.41
01-04537	PORTER DIST CO					
		I-152974	613-45650-42615	COGS-ALCOHOL C.P. CONCESSION LIQUOR PRODUCT	183966	176.00
01-05892	GAYLEN'S HOMEGROWN POPC					
		I-6023	613-45650-42610	COST OF GOODS C.P. CONCESSION PRODUCT	183911	1,276.80
		I-6038	613-45650-42610	COST OF GOODS C.P. CONCESSION PRODUCT	183911	869.60
01-06656	PREMIER PEST CONTROL					
		I-16017	613-45650-42502	CONTRACT SERV JULY PEST CONTROL @ C.P.	183967	200.00
01-07927	DMM SYSTEMS LLC					
		I-2020 C.P. FESTIVAL	613-45650-42905	ENTERTAINMENT C.P. FESTIVAL LIGHT/SOUND	183903	25,500.00
	PROJ: W07-42905	CORN PALACE FESTIVAL-2020		ENTERTAINMENT		
01-08130	C & B OPERATIONS LLC					
		I-10772715	613-45650-42500	REPAIRS & MAI V-BELT	183879	26.80
		I-10772717	613-45650-42500	REPAIRS & MAI BOOTS	183879	40.66
01-08281	AMERIPRIDE SERVICES INC					
		I-2801168476	613-45650-42500	REPAIRS & MAI MATS	183862	30.00
		I-2801182922	613-45650-42500	REPAIRS & MAI MATS	183862	30.00
01-09011	WESTON FRANK LIVE ENTER					
		I-2020 PRE-STURGIS	613-45650-42905	ENTERTAINMENT PRE-STURGIS PARTY 8/6	184018	3,000.00
	PROJ: W08-42905	PRESTURGIS 2020		ENTERTAINMENT		
01-09996	BIG SIOUX EMBROIDERY					
		I-2325	613-45650-42650	UNIFORMS MASKS W/LOGO ON FRONT	183876	210.00
					DEPARTMENT 5650 CORN PALACE	TOTAL: 37,064.45
					FUND 613 CORN PALACE	TOTAL: 38,138.45

7/29/2020 1:45 PM  
 PACKET: 05500 8/3/20 MEETING  
 VENDOR SET: 01  
 FUND : 614 GOLF COURSE  
 DEPARTMENT: 5250 GOLF COURSE  
 BUDGET TO USE: CB-CURRENT BUDGET

BANK: APBNK

VENDOR	NAME	ITEM #	G/L ACCOUNT NAME	DESCRIPTION	CHECK#	AMOUNT
01-00356	QUALIFIED PRESORT					
		I-493919	614-45250-42600	SUPPLIES & MA EZ FLATS	183969	2.75
01-00671	VAN DIEST SUPPLY CO					
		I-67370	614-45250-42602	CHEMICALS CHEMICALS	184011	2,660.00
01-00712	NAPA AUTO PARTS					
		I-730142	614-45250-42600	SUPPLIES & MA AIR FILTERS	183957	102.00
01-01325	MEYERS OIL CO					
		I-12758	614-45250-42610	GAS & FUEL REGULAR GAS	183944	479.08
		I-12791	614-45250-42610	GAS & FUEL DIESEL FUEL #2R	183944	247.50
01-01355	MIDWEST TURF & IRRIGATI					
		I-3850490-00	614-45250-42600	SUPPLIES & MA CHAMBER-RH	183949	231.54
01-01830	NORTHWESTERN ENERGY & C					
		I-2581639-8-7/20	614-45250-42800	UTILITIES 700 W 23RD AVE	183958	152.42
		I-2581643-0-7/20	614-45250-42800	UTILITIES GOLF PUMP 100 H	183958	819.99
		I-2581875-8-7/20	614-45250-42800	UTILITIES GOLF CLUB HOUSE	183958	632.67
		I-2581876-6-7/20	614-45250-42800	UTILITIES GOLF CART SHED	183958	61.50
		I-2939180-2-7/20	614-45250-42800	UTILITIES 825 INDIAN VILLAGE RD	183958	273.84
01-02679	MENARD'S INC					
		I-573	614-45250-42600	SUPPLIES & MA HAND SOAP,GARBAGE BAGS	183940	29.97
01-02790	SUN GOLD SPORTS					
		I-5114	614-45250-42650	UNIFORMS EMBROIDERED LOGOS	183997	28.00
01-02804	TMA STORES					
		I-74890	614-45250-42600	SUPPLIES & MA TIRE	184006	131.84
01-02880	THUNE TRUE VALUE HARDWA					
		I-A444709	614-45250-42600	SUPPLIES & MA CLEANER	184001	11.97
		I-A444796	614-45250-42600	SUPPLIES & MA 3V BATTERY	184001	3.99
		I-A444837	614-45250-42600	SUPPLIES & MA HAND SOAP,HAND SANITIZER,	184001	58.39
01-03588	ZIMCO SUPPLY CO					
		I-144447	614-45250-42604	TREES & SOD BENTGRASS	184024	343.75
01-07716	SAGA COMMUNICATIONS OF					
		I-1200691534-6/20	614-45250-42300	PUBLISHING CONTRACT #119664-GOLF COURSE	183979	200.00
01-08892	ERIC HIEB					
		I-2020-8	614-45250-42200	GOLF PRO CONT PAYMENT #8	183918	6,300.86
		I-2020-8A	614-45250-42200	GOLF PRO CONT PAYMENT #8-CC REIMBURSEMENT	183918	642.03
01-09703	AMAZON CAPITAL SERVICES					
		I-1KK4-4RKX-FRHC	614-45250-42600	SUPPLIES & MA STUMP GRINDER TEETH	183860	54.35

DEPARTMENT 5250 GOLF COURSE TOTAL: 13,468.44

FUND 614 GOLF COURSE TOTAL: 13,468.44

7/29/2020 1:45 PM  
 PACKET: 05500 8/3/20 MEETING  
 VENDOR SET: 01  
 FUND : 619 CAMPGROUND  
 DEPARTMENT: 5220 CAMPGROUND  
 BUDGET TO USE: CB-CURRENT BUDGET

REGULAR DEPARTMENT PAYMENT REGISTER

BANK: APBNK

VENDOR	NAME	ITEM #	G/L ACCOUNT NAME	DESCRIPTION	CHECK#	AMOUNT
01-01590	MCLEOD'S PRINTING	I-41270	619-45220-42500	REPAIR & MAIN TIME CARDS	183939	239.90
01-02051	MIDCONTINENT COMMUNICAT	I-12860920311417	619-45220-42800	UTILITIES ACCT #128609203	183948	104.80
01-03100	CENTURY LINK	I-605 995-8457-7/20	619-45220-42800	UTILITIES MONTHLY SERVICE 7/7-8/6	183883	13.52
					DEPARTMENT 5220 CAMPGROUND	TOTAL: 358.22
					FUND 619 CAMPGROUND	TOTAL: 358.22

PACKET: 05500 8/3/20 MEETING  
VENDOR SET: 01  
FUND : 621 EMERGENCY MEDICAL SERVICE  
DEPARTMENT: 4600 EMS  
BUDGET TO USE: CB-CURRENT BUDGET

BANK: APBNK

VENDOR	NAME	ITEM #	G/L ACCOUNT NAME	DESCRIPTION	CHECK#	AMOUNT
01-00140	AL'S ENGRAVING	I-15911	621-44600-42640	UNIFORMS NAME BADGE	183859	6.95
01-01518	VERIZON WIRELESS	I-9858131291	621-44600-42800	UTILITIES ACCT #786752327-00002	184012	100.02
01-02840	TESSIER'S INC	I-TES047739	621-44600-42500	REPAIRS & MAI PLANNED MAINTENANCE SERVICE	183998	218.25
01-07628	STRYKER SALES CORPORATI	I-3089507M	621-44600-42650	MINOR EQUIPME SMART BATTERY PACK	183993	372.99
					DEPARTMENT 4600 EMS	TOTAL: 698.21
					FUND 621 EMERGENCY MEDICAL SERVICE	TOTAL: 698.21

7/29/2020 1:45 PM  
 PACKET: 05500 8/3/20 MEETING  
 VENDOR SET: 01  
 FUND : 700 AGENCY FUNDS  
 DEPARTMENT: 5300 AGENCY FUNDS  
 BUDGET TO USE: CB-CURRENT BUDGET

REGULAR DEPARTMENT PAYMENT REGISTER

BANK: APBNK

VENDOR	NAME	ITEM #	G/L	ACCOUNT NAME	DESCRIPTION	CHECK#	AMOUNT
01-01410	MITCHELL SCHOOL DISTRIC	I-72220	700-45300-42902	PARK	CTE CAMP REVENUE	183954	1,068.00
01-04494	JASON CHRISTENSEN	I-72220	700-45300-42902	PARK	SKILLS & DRILLS CAMP	183885	4,005.00
01-06303	MITCHELL PARK & RECREAT	I-72220	700-45300-42902	PARK	CTE CAMP REVENUE	183953	120.00
01-09985	SAVANNAH FISCHER	I-71420	700-45300-42904	CORN PALACE G 90'S HIP HOP PARTY TICKETS REF		183909	228.90
						DEPARTMENT 5300 AGENCY FUNDS	TOTAL: 5,421.90
						FUND 700 AGENCY FUNDS	TOTAL: 5,421.90

PACKET: 05500 8/3/20 MEETING

VENDOR SET: 01

FUND : 710 SPECIAL ASSESSMENT-710

DEPARTMENT: 5000 97 SIDEWALK CONSTRUCTION

BANK: APBNK

BUDGET TO USE: CB-CURRENT BUDGET

VENDOR	NAME	ITEM #	G/L ACCOUNT NAME	DESCRIPTION	CHECK#	AMOUNT
01-01036	REXWINKEL CONCRETE INC.					
		I-2019-4 P.E. #2	710-45000-42900	SIDEWALK CONS 2019-4 P.E. #2	183971	17,977.05
DEPARTMENT 5000 97 SIDEWALK CONSTRUCTION TOTAL:						17,977.05
FUND 710 SPECIAL ASSESSMENT-710 TOTAL:						17,977.05

PACKET: 05500 8/3/20 MEETING

VENDOR SET: 01

FUND : 724 2011 STREET CONSTRUCTION

DEPARTMENT: 5000 STREET CONST.

BANK: APBNK

BUDGET TO USE: CB-CURRENT BUDGET

VENDOR	NAME	ITEM #	G/L ACCOUNT NAME	DESCRIPTION	CHECK#	AMOUNT
01-03884	COMMERCIAL ASPHALT/SPEN					
		I-19542	724-45000-42900	PROJECT CONST BUSSMUS GRAVEL	183889	3,627.00
				DEPARTMENT 5000 STREET CONST.	TOTAL:	3,627.00
				FUND 724 2011 STREET CONSTRUCTION	TOTAL:	3,627.00
					REPORT GRAND TOTAL:	1,335,253.09

## \*\* G/L ACCOUNT TOTALS \*\*

YEAR	ACCOUNT	NAME	AMOUNT	=====LINE ITEM=====		=====GROUP BUDGET=====	
				ANNUAL BUDGET	BUDGET OVER AVAILABLE BUDG	ANNUAL BUDGET	BUDGET OVER AVAILABLE BUDG
2020-2021	101-41110-42600	SUPPLIES & MATERIALS	12.00	3,000	2,529.50		
	101-41410-42610	WEST GROUP LAW DATABASE	219.26	10,000	5,054.00		
	101-41440-42231	EMPLOYEE PHYSICALS, DRUG TE	882.45	35,000	23,419.97		
	101-41460-42110	LIABILITY, PROPERTY INS &	91.85	169,000	1,880.62-	Y	
	101-41920-42520	REPAIR-CITY HALL	144.14	17,500	15,508.18		
	101-41920-42620	SUPPLIES-CITY HALL	960.48	2,500	2,725.74-	Y	
	101-41935-42250	MANAGED PRINT SERVICES	8,280.07	50,000	21,172.70		
	101-41935-42615	POSTAGE	327.20	9,000	4,501.64		
	101-41935-42640	COPY MACHINE SUPPLIES	184.95	2,500	1,274.86		
	101-41935-42645	COMPUTER HARDWARE	1,134.66	45,000	34,610.79		
	101-41935-42920	COMPUTER SOFTWARE	910.00	60,000	1,753.72		
	101-42110-42200	PROFESSIONAL SERVICES	196.94	19,000	11,134.64		
	101-42110-42201	BUILDING MAINT/CLEANING SU	1,451.47	15,000	7,984.51		
	101-42110-42210	CRIMINAL INVESTIGATION	11.00	1,000	921.24		
	101-42110-42500	REPAIR & MAINTENANCE	1,309.33	7,000	5,712.34-	Y	
	101-42110-42600	SUPPLIES	99.56	12,000	6,565.60		
	101-42110-42610	GAS OIL TIRES	30.16	35,000	16,440.42		
	101-42110-42640	UNIFORM ALLOWANCE	60.00	10,000	8,069.54		
	101-42110-42710	TRAINING	55.00	10,000	8,551.00		
	101-42110-42800	TELEPHONE	80.02	13,000	4,881.61		
	101-42110-42820	UTILITIES-SHOOTING RANGE B	69.37	1,000	257.15		
	101-42110-42902	ALCOHOL TASK FORCE	49.95	8,755	8,551.75		
	101-42110-42980	VEHICLE TOWING	275.00	7,000	2,816.00		
	101-42110-43320	ROOF	6,498.65	49,993	40,944.35		
	101-42130-42500	REPAIRS	125.00	3,000	1,816.78		
	101-42130-42520	EMERGENCY SIREN UTILITIES	164.33	2,500	992.14		
	101-42130-42540	SIGNS	367.66	15,000	12,755.07		
	101-42130-42545	PAINT	808.40	9,000	3,905.65-	Y	
	101-42130-42550	CONSTRUCTION SIGNING	179.50	1,000	1,110.94-	Y	
	101-42130-42600	SUPPLIES	27.21	3,000	2,031.35		
	101-42130-42810	UTILITIES-TRAFFIC LIGHTS	841.03	36,000	16,707.27		
	101-42130-42835	UTILITIES-STREET LIGHTS	668.20	225,000	108,380.83		
	101-42130-42840	BUILDING UTILITIES	200.94	4,000	1,421.10		
	101-42200-42200	PROFESSIONAL SERVICES	18.17	4,000	3,717.33		
	101-42200-42500	REPAIR & MAINTENANCE	218.25	4,700	349.78-	Y	
	101-42200-42600	SUPPLIES	97.57	6,000	2,813.68		
	101-42200-42613	PROMOTIONAL ITEMS	60.00	500	440.00		
	101-42200-42641	PROTECTIVE CLOTHING	331.95	8,152	1,078.05		
	101-42200-42800	TELEPHONE	100.03	2,000	605.73		
	101-42200-42810	UTILITIES	3,202.66	39,200	14,752.17		
	101-42200-43300	ROOF	6,498.65	49,993	40,342.69		
	101-43100-42600	SUPPLIES	4,367.81	133,000	27,935.83		
	101-43100-42620	ASPHALT MIX	2,159.40	150,000	123,076.30		
	101-43100-42630	GRAVEL- BASE	11,513.00	30,000	18,487.00		
	101-43100-42650	UNIFORMS	1,203.53	4,500	2,191.15		



\*\* G/L ACCOUNT TOTALS \*\*

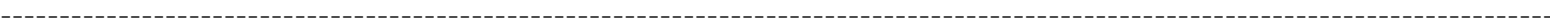
YEAR	ACCOUNT	NAME	AMOUNT	=====LINE ITEM=====		=====GROUP BUDGET=====	
				ANNUAL BUDGET	BUDGET OVER AVAILABLE BUDG	ANNUAL BUDGET	BUDGET OVER AVAILABLE BUDG
	101-43110-42600	SUPPLIES	61.29	5,000	3,369.13		
	101-43110-42750	PLANNING COMMISSION EXPENS	44.03	750	270.20		
	101-43120-42520	HAZARDOUS SIDEWALK REPAIR	3,057.20	30,000	21,169.86		
	101-43120-42521	SIDEWALK CONSTRUCT	16,653.70	192,000	128,584.10		
	101-43120-42670	CHIP SEAL AGGREGATE	90.00	57,000	27,400.84		
	101-43120-42680	CHIP SEAL ASPHALT	87,219.94	200,000	112,780.06		
	101-43120-43300	STREET OVERLAY MAINT	42,623.80	895,000	374,118.18		
	101-43120-43315	SANBORN-1ST TO 8TH	7,122.27	26,303	10,785.14		
	101-43150-42500	REPAIR & MAINTENANCE	1,184.30	4,000	2,815.70		
	101-43150-42800	UTILITIES	54.65	500	280.30		
	101-43150-43306	SANBORN-8TH TO 15TH	477,774.84	3,641,644	2,391,423.18		
	101-43150-43316	EAST CENTRAL DRAINAGE	70,071.30	2,861,347	2,484,963.40		
	101-43700-42500	REPAIR & MAINTENANCE	1,997.96	5,000	475.74		
	101-43700-42600	SUPPLIES & MATERIALS	357.97	18,000	5,852.89		
	101-43700-42610	GAS & FUEL	247.50	8,000	4,372.44		
	101-43700-42800	UTILITIES	166.35	4,500	2,830.53		
	101-44120-42900	IMPOUNDING DOGS	350.00	15,000	5,786.50		
	101-45500-42310	NEWSPAPERS	186.33	852	78.73-	Y	
	101-45500-42500	REPAIR & MAINTENANCE	5.99	1,500	2,851.92-	Y	
	101-45500-42600	SUPPLIES & MATERIALS	188.26	10,000	4,357.60		
	101-45500-42690	MINITEX FEES	1,418.52	4,800	1,076.28		
	101-45500-42800	UTILITIES	157.92	34,131	16,434.61		
	101-45500-43420	BOOKS	638.11	45,300	26,056.64		
	201-45110-42550	REPAIR & MAINT-AQUATICS	5,751.18	17,499	11,640.93		
	201-45110-42600	SUPPLIES & MATERIALS	247.99	10,000	7,803.86		
	201-45110-42601	CONCESSION SUPPLIES	2,752.84	22,500	9,388.59		
	201-45110-42605	SUPPLIES & MAT-AQUATICS	271.15	5,750	221.61-	Y	
	201-45140-42300	PUBLISHING	932.00	51,000	26,743.13		
	201-45140-42500	REPAIR & MAINTENANCE	632.65	22,800	1,995.62		
	201-45140-42600	SUPPLIES & MATERIALS	926.53	25,000	10,962.16		
	201-45140-42601	CONCESSION SUPPLIES	465.66	13,000	7,982.83		
	201-45140-42800	UTILITIES	5,689.42	178,000	94,075.73		
	201-45140-42999	REFUNDS	40.00	250	632.00-	Y	
	201-45160-42500	REPAIR & MAINTENANCE	2,688.77	48,000	10,645.01		
	201-45160-42600	SUPPLIES & MATERIALS	3,664.64	39,500	13,418.01		
	201-45160-42603	SMALL EQUIPMENT	755.00	4,000	3,115.01		
	201-45160-42800	UTILITIES	1,162.96	122,000	64,773.30		
	201-45160-43300	CAPITAL IMPROVEMENTS - OTH	12,141.00	12,700	15,241.00-	Y	
	201-45165-42610	COST OF GOODS SOLD	267.28	24,000	16,112.70		
	201-45210-42500	REPAIR & MAINTENANCE	1,688.41	35,000	15,185.04		
	201-45210-42600	SUPPLIES & MATERIALS	2,717.33	69,998	48,299.12		
	201-45210-42604	TREES	300.00	5,000	3,725.01		
	201-45210-42610	GAS & FUEL	1,643.73	26,000	14,258.47		
	201-45210-42650	UNIFORMS	44.99	1,850	565.79		
	201-45210-42800	UTILITIES	211.82	50,000	42,262.12		

\*\* G/L ACCOUNT TOTALS \*\*

YEAR	ACCOUNT	NAME	AMOUNT	=====LINE ITEM=====		=====GROUP BUDGET=====	
				ANNUAL BUDGET	BUDGET OVER AVAILABLE BUDG	ANNUAL BUDGET	BUDGET OVER AVAILABLE BUDG
	201-45220-42500	REPAIR & MAINTENANCE	1,430.00	18,000	13,800.00		
	201-45220-42600	SUPPLIES & MATERIALS	201.09	1,800	633.12		
	211-46311-42963	COMMUNITY PROJECTS	79,027.96	605,000	22,085.86		
	214-43500-42200	PROFESSIONAL SERVICES	2.28	4,015	1,416.53		
	214-43500-42500	REPAIRS & MAINTENANCE	87.30	3,500	312.12-	Y	
	214-43500-42600	SUPPLIES & MATERIALS	12.34	1,172	646.04		
	214-43500-42650	UNIFORMS	12.00	3,148	2,770.61		
	214-43500-43300	ROOF	6,498.65	49,993	40,342.69		
	218-45140-42800	UTILITIES	13.14	450	381.92		
	218-45150-42500	REPAIR AND MAINTENANCE	269.06	14,000	11,979.54		
	218-45150-42511	GARAGE REPAIR & MAINTENANC	71.43	2,000	731.46		
	218-45150-42600	SUPPLIES & MATERIALS	410.32	16,300	11,470.69		
	218-45150-42700	TRAVEL, CONFERENCE, TRAINI	300.00	0	681.20-	Y	
	218-45150-42800	UTILITIES	47.77	1,220	596.22		
	218-45150-42920	COMPUTER SOFTWARE/SUPPORT	23,233.56	35,280	7,636.55		
	218-45180-42600	SUPPLIES & MATERIALS	877.50	7,000	4,388.19		
	218-45180-42800	UTILITIES	13.14	25,000	10,958.43		
	219-45140-42500	REPAIR & MAINTENANCE	553.44	100	1,501.53-	Y	
	219-45140-42600	SUPPLIES & MATERIALS	252.48	1,200	1,303.06-	Y	
	219-45140-42605	MEAL SUPPLIES	321.08	3,000	1,728.31-	Y	
	219-45140-42800	UTILITIES	13.15	450	158.43		
	219-45140-42911	CONTRACT SERVICES-MEALS	5,904.87	227,000	125,982.51		
	602-43330-42500	REPAIR & MAINTENANCE	229.39	25,000	23,751.28		
	602-43330-42600	SUPPLIES & MATERIALS	108.07	20,000	11,651.46		
	602-43330-42620	CHEMICAL SERVICE CONTRACT	1,562.50	25,000	11,812.50		
	602-43340-42510	WATER PROJ SIDEWALK/C&G RE	1,223.00	6,000	4,777.00		
	602-43340-42525	HYDRANT REPAIRS	3,398.45	15,000	6,232.03		
	602-43340-42550	SHUT OFF REPAIR	29.00	6,000	3,745.00		
	602-43340-42600	SUPPLIES & MATERIALS	722.90	75,000	29,695.27		
	602-43340-42650	UNIFORMS	30.00	1,250	919.11		
	602-43340-42660	POSTAGE	701.25	9,000	4,016.35		
	602-43340-42800	UTILITIES	19.11	5,000	1,064.85		
	602-43340-42910	BILLING OFFICE	298.89	20,000	13,869.64		
	602-43340-43323	SANBORN-8TH TO 15TH	99,253.19	536,200	287,288.18		
	602-43340-43346	EAST CENTRAL DRAINAGE	9,726.77	394,055	219,466.12		
	602-43340-43409	WATER METERS	13,843.00	25,000	3,926.73		
	604-43200-42600	SUPPLIES	57.97	20,000	8,662.64		
	604-43200-42660	POSTAGE	696.06	9,000	3,973.82		
	604-43210-42700	TRAVEL CONFERENCE & DUES	155.00	1,500	1,273.00		
	604-43250-42500	REPAIRS	429.99	15,000	8,343.80-	Y	
	604-43250-42600	SUPPLIES	432.37	36,000	14,364.97		
	604-43250-42800	UTILITIES	524.22	37,000	13,645.33		
	604-43250-42910	BILLING OFFICE	298.90	9,000	2,869.66		
	604-43250-42916	NUISANCE ABATEMENT	75.00	1,000	475.00		
	604-43250-43315	EAST CENTRAL DRAINAGE	12,676.95	1,061,118	828,170.74		

\*\* G/L ACCOUNT TOTALS \*\*

YEAR	ACCOUNT	NAME	AMOUNT	=====LINE ITEM=====		=====GROUP BUDGET=====	
				ANNUAL BUDGET	BUDGET OVER AVAILABLE BUDG	ANNUAL BUDGET	BUDGET OVER AVAILABLE BUDG
	604-43250-43334	SANBORN-8TH TO 15TH	161,211.46	706,980	414,834.61		
	604-43250-43345	LOMA LINDA UTILITIES	100.00	87,324	87,224.00		
	612-43220-42200	CONTRACT-MILLENNIUM	2,767.80	0	12,869.85-	Y	
	612-43220-42800	UTILITIES	280.93	0	1,306.73-	Y	
	612-43230-42500	REPAIRS	1,620.68	7,000	1,472.10-	Y	
	612-43230-42600	SUPPLIES	1,507.93	25,000	246.87		
	612-43230-42650	UNIFORMS	39.28	1,600	560.66		
	612-43230-42660	POSTAGE	694.96	10,000	5,033.25		
	612-43230-42910	BILLING OFFICE	298.90	8,000	1,869.66		
	612-43240-42205	MONITOR GROUND WATER-OLD L	1,096.00	15,000	9,553.00		
	612-43240-42500	REPAIR AND MAINTENANCE	4,303.07	30,000	1,999.81		
	612-43240-42550	LAB FEES	1,851.00	23,000	8,149.35		
	612-43240-42600	SUPPLIES	277.44	50,000	26,811.12		
	612-43240-42650	UNIFORMS	315.45	2,500	1,496.90		
	613-34651	FESTIVAL-TICKET*NON-EXPENS	1,074.00	175,000-	167,494.00-		
	613-45650-42320	ADVERTISING/PRINTING	386.88	39,000	37,976.20		
	613-45650-42500	REPAIRS & MAINTENANCE	1,121.79	40,000	21,712.99		
	613-45650-42502	CONTRACT SERVICES	200.00	58,750	12,213.13		
	613-45650-42600	SUPPLIES & MATERIALS	558.76	40,000	26,635.60		
	613-45650-42610	COST OF GOODS SOLD	5,536.06	135,000	75,133.27		
	613-45650-42615	COGS-ALCOHOL	176.00	30,000	26,493.73		
	613-45650-42650	UNIFORMS	559.00	2,000	726.87		
	613-45650-42660	SHIPPING/POSTAGE	25.96	2,000	848.02		
	613-45650-42905	ENTERTAINMENT	28,500.00	215,000	185,000.00		
	614-45250-42200	GOLF PRO CONTRACT	6,942.89	66,000	20,828.48		
	614-45250-42300	PUBLISHING	200.00	2,000	1,340.00		
	614-45250-42600	SUPPLIES & MATERIALS	626.80	21,000	2,079.11		
	614-45250-42602	CHEMICALS	2,660.00	20,000	4,038.25		
	614-45250-42604	TREES & SOD	343.75	2,500	550.25		
	614-45250-42610	GAS & FUEL	726.58	10,000	4,422.88		
	614-45250-42650	UNIFORMS	28.00	400	227.04		
	614-45250-42800	UTILITIES	1,940.42	14,000	7,196.28		
	619-45220-42500	REPAIR & MAINTENANCE	239.90	10,000	7,342.87		
	619-45220-42800	UTILITIES	118.32	17,000	11,184.57		
	621-44600-42500	REPAIRS & MAINTENANCE	218.25	1,000	102.05		
	621-44600-42640	UNIFORMS	6.95	3,300	2,925.12		
	621-44600-42650	MINOR EQUIPMENT	372.99	5,610	1,868.12		
	621-44600-42800	UTILITIES	100.02	4,225	2,701.64		
	700-45300-42902	PARK	5,193.00	0	13,137.72-	Y	
	700-45300-42904	CORN PALACE GAMES	228.90	0	71,919.95-	Y	
	710-45000-42900	SIDEWALK CONSTRUCTION	17,977.05	0	69,620.70-	Y	
	724-45000-42900	PROJECT CONSTRUCTION	3,627.00	0	86,642.40-	Y	
**	2020-2021 YEAR TOTALS	**	1,335,253.09				



## \*\* DEPARTMENT TOTALS \*\*

ACCT	NAME	AMOUNT
101-1110	CITY COUNCIL	12.00
101-1410	ATTORNEY'S OFFICE	219.26
101-1440	HUMAN RESOURCES	882.45
101-1460	INSURANCE & BONDS	91.85
101-1920	MUNICIPAL BUILDINGS	1,104.62
101-1935	INFORMATION TECHNOLOGY	10,836.88
101-2110	POLICE DEPARTMENT	10,186.45
101-2130	TRAFFIC DEPARTMENT	3,382.27
101-2200	FIRE DEPARTMENT	10,527.28
101-3100	STREET DEPARTMENT	19,243.74
101-3110	PUBLIC WORKS ADMIN	105.32
101-3120	STREET & SIDEWALK CONST	156,766.91
101-3150	STORM DRAINAGE	549,085.09
101-3700	CEMETERY	2,769.78
101-4120	ANIMAL CONTROL	350.00
101-5500	LIBRARY	2,595.13
-----		
101 TOTAL	GENERAL	768,159.03
201-5110	RECREATION & AQUATICS	9,023.16
201-5140	RECREATION CENTER	8,686.26
201-5160	SPORTS COMPLEXES	20,412.37
201-5165	CADWELL CONCESSIONS	267.28
201-5210	PARKS	6,606.28
201-5220	SUPERVISION	1,631.09
-----		
201 TOTAL	PARK FUND	46,626.44
211-6311	ENTERTAINMENT TAX	79,027.96
-----		
211 TOTAL	ENTERTAINMENT TAX	79,027.96
214-3500	E-911	6,612.57
-----		
214 TOTAL	E-911 EMERGENCY	6,612.57
218-5140	MVP	13.14
218-5150	PALACE TRANSIT	24,332.14
218-5180	JVCC	890.64
-----		
218 TOTAL	COMMUNITY SERVICES	25,235.92

## \*\* DEPARTMENT TOTALS \*\*

ACCT	NAME	AMOUNT
219-5140	NUTRITION	7,045.02
-----		
219 TOTAL	NUTRITION	7,045.02
602-3330	WATER TREATMENT PLANT	1,899.96
602-3340	WATER DISTRIBUTION	129,245.56
-----		
602 TOTAL	WATER	131,145.52
604-3200	WASTE WATER TREATMENT	754.03
604-3210	WASTE WATER IND PRETREAT	155.00
604-3250	WASTE WATER COLLECTION	175,748.89
-----		
604 TOTAL	SEWER	176,657.92
612-3220	RECYCLING PROGRAM	3,048.73
612-3230	WASTE COLLECTION	4,161.75
612-3240	LANDFILL	7,842.96
-----		
612 TOTAL	SANITATION	15,053.44
613	NON-DEPARTMENTAL	1,074.00
613-5650	CORN PALACE	37,064.45
-----		
613 TOTAL	CORN PALACE	38,138.45
614-5250	GOLF COURSE	13,468.44
-----		
614 TOTAL	GOLF COURSE	13,468.44
619-5220	CAMPGROUND	358.22
-----		
619 TOTAL	CAMPGROUND	358.22
621-4600	EMS	698.21
-----		
621 TOTAL	EMERGENCY MEDICAL SERVICE	698.21

## \*\* DEPARTMENT TOTALS \*\*

ACCT	NAME	AMOUNT
700-5300	AGENCY FUNDS	5,421.90
-----		
700 TOTAL	AGENCY FUNDS	5,421.90
710-5000	97 SIDEWALK CONSTRUCTION	17,977.05
-----		
710 TOTAL	SPECIAL ASSESSMENT-710	17,977.05
724-5000	STREET CONST.	3,627.00
-----		
724 TOTAL	2011 STREET CONSTRUCTION	3,627.00
-----		
	** TOTAL **	1,335,253.09

## \*\*\* PROJECT TOTALS \*\*\*

PROJECT	LINE ITEM	AMOUNT
E01 5311-FY18/19	GAMAIN T Garage Maintenance	71.43
	GASUP Garage Supplies	107.76
	MAINT Maintenance/Repairs	269.06
	OFFSUP Office Supplies	302.56
	OFFUT Office Utilities	47.77
	SHAH Tablet/Radio Contract	23,233.56
	TRA Travel/Training	300.00
	** PROJECT E01 TOTAL **	24,332.14
H01 SPORTS COMPLEX EQUIPMENT	42500 REPAIR/MAINTENANCE	623.83
	42600 SUPPLIES/MAINTENANCE	16.99
	** PROJECT H01 TOTAL **	640.82
H02 CADWELL STADIUM	42500 REPAIR/MAINTENANCE	1,339.31
	42600 SUPPLIES/MATERIALS	326.54
	42800 UTILITIES	525.48
	** PROJECT H02 TOTAL **	2,191.33
H03 OLD SOCCER FIELDS	42600 SUPPLIES/MATERIALS	128.91
	** PROJECT H03 TOTAL **	128.91

## \*\*\* PROJECT TOTALS \*\*\*

PROJECT	LINE ITEM	AMOUNT
H04 BASEBALL	43300 CAPITAL IMPROVEMENTS	12,141.00
	** PROJECT H04 TOTAL **	12,141.00
H05 SOFTBALL	42600 SUPPLIES/MATERIALS	146.63
	** PROJECT H05 TOTAL **	146.63
H06 ARENA-NORTH RINK	42600 SUPPLIES-MATERIALS	2,560.54
	42800 UTILITIES	613.56
	** PROJECT H06 TOTAL **	3,174.10
H07 PEPSI COMPLEX	42500 REPAIR/MAINTENANCE	301.74
	42600 SUPPLIES/MATERIALS	217.08
	** PROJECT H07 TOTAL **	518.82
H08 PATTON YOUNG PARK	42500 REPAIR/MAINTENANCE	17.58
	** PROJECT H08 TOTAL **	17.58
H12 DOG PARK	42500 REPAIR/MAINTENANCE	406.31
	42600 SUPPLIES/MATERIALS	27.97
	** PROJECT H12 TOTAL **	434.28
H13 ARENA-SOUTH RINK	42600 SUPPLIES-MAINTENANCE	239.98
	42603 SMALL EQUIPMENT	755.00
	42800 UTILITIES	23.92
	** PROJECT H13 TOTAL **	1,018.90
H50 PARKS EQUIPMENT	42500 REPAIR/MAINTENANCE	1,293.17
	42600 SUPPLIES/MATERIALS	105.44
	42610 GAS/FUEL	1,643.73
	** PROJECT H50 TOTAL **	3,042.34
H51 PARK SHOP	42600 SUPPLIES/MATERIALS	180.98
	** PROJECT H51 TOTAL **	180.98
H52 FORESTRY	42604 TREES	300.00
	** PROJECT H52 TOTAL **	300.00
H56 HITCHCOCK PARK	42600 SUPPLIES/MATERIALS	2,177.64
	** PROJECT H56 TOTAL **	2,177.64

## \*\*\* PROJECT TOTALS \*\*\*

PROJECT	LINE ITEM	AMOUNT
H60 NORTHRIDGE PARK	42800 UTILITIES	23.03
	** PROJECT H60 TOTAL **	23.03
H65 AMPHITHEATER	42800 UTILITIES	46.67
	** PROJECT H65 TOTAL **	46.67
H66 CAMP ARROYA	42500 REPAIR/MAINTENANCE	395.24
	42600 SUPPLIES/MATERIALS	100.91
	** PROJECT H66 TOTAL **	496.15
H67 DAY CAMP	42600 SUPPLIES/MATERIALS	121.34
	** PROJECT H67 TOTAL **	121.34
H74 PUBLIC BEACH	42600 SUPPLIES/MATERIALS	42.00
	** PROJECT H74 TOTAL **	42.00
H77 SPORTSMANS CLUB	42800 UTILITIES	53.03
	** PROJECT H77 TOTAL **	53.03
H79 LAKE PARK ACCESS AREAS	42800 UTILITIES	10.16
	** PROJECT H79 TOTAL **	10.16
H87 PATTON YOUNG	42800 UTILITIES	78.93
	** PROJECT H87 TOTAL **	78.93
J02 INDOOR AQUATIC CTR	ELE/GAS UTILITIES-ELECTRIC/GAS	4,455.75
	RM-EQUIP REPAIR/MAINT-EQUIPMENT	54.90
	RM-PLUMB REPAIR/MAINT-PLUMBING	357.75
	SM-EQUIP SUPPLIES/MATERIAL-EQUIPMENT	78.00
	SM-OFFIC SUPPLIES/MATERIALS-OFFICE	170.00
	SM-PLUMB SUPPLIES/MATERIALS-PLUMBING	328.59
	** PROJECT J02 TOTAL **	5,444.99
J03 REC CTR-WELLNESS/FITNESS	RM-EQUIP REPAIR/MAINTENANCE-EQUIPMENT	220.00
	SM-EQUIP SUPPLIES/MATERIAL-EQUIPMENT	101.95
	** PROJECT J03 TOTAL **	321.95
J04 REC CTR-PROGRAMS	REFUND REFUND MEMBERSHIP	40.00
	SM-OFFIC SUPPLIES/MATERIAL-OFFICE	31.09
	** PROJECT J04 TOTAL **	71.09



## \*\*\* PROJECT TOTALS \*\*\*

PROJECT	LINE ITEM	AMOUNT
J05 REC CTR CONCESSIONS	CONC SUP CONCESSION SUPPLY	465.66
	** PROJECT J05 TOTAL **	465.66
J06 REC CTR-GENERAL BLDG	SM-GENER SUPPLIES/MATERIAL-GENERAL	60.31
	SM-HVAC SUPPLIES/MATERIAL-HVAC	14.99
	SM-JANIT SUPPLIES/MATERIAL-JANITORIAL	130.62
	** PROJECT J06 TOTAL **	205.92
J08 REC CTR PUBLISHING	KMIT PUBLISHING-KMIT	932.00
	** PROJECT J08 TOTAL **	932.00
J09 REC CTR UTILITIES	ELE/GAS UTILITIES-ELECTRIC/GAS	1,233.67
	** PROJECT J09 TOTAL **	1,233.67
J50 OUTDOOR AQUATIC CENTER	CONCESS CONCESSIONS	2,752.84
	RM-EQUIP REPAIR/MAINT-EQUIPMENT	439.26
	RM-PLUMB REPAIR/MAINT-PLUMBING	5,311.92
	SM-JANIT SUPPLIES/MATERIAL-JANITORIAL	50.40
	SM-OFFIC SUPPLIES/MATERIAL-OFFICE	200.43
	SM-PLUMB SUPPLIES/MATERIAL-PLUMBING	20.32
	** PROJECT J50 TOTAL **	8,775.17
J51 P&A YOUTH PROGRAMS	SM-EQUIP SUPPLIES/MATERIAL-EQUIPMENT	46.91
	SM-OFFIC SUPPLIES/MATERIAL-OFFICE	31.08
	** PROJECT J51 TOTAL **	77.99
J52 P&A ADULT PROGRAMS	SM-OFFIC SUPPLIES-MATERIAL-OFFICE	170.00
	** PROJECT J52 TOTAL **	170.00
W07 CORN PALACE FESTIVAL-2020	42905 ENTERTAINMENT	25,500.00
	** PROJECT W07 TOTAL **	25,500.00
W08 PRESTURGIS 2020	42905 ENTERTAINMENT	3,000.00
	** PROJECT W08 TOTAL **	3,000.00
X04 DECORATING	42500 REPAIRS/MAINTENANCE	87.93
	42600 SUPPLIES	34.95
	** PROJECT X04 TOTAL **	122.88

NO ERRORS

\*\* END OF REPORT \*\*