

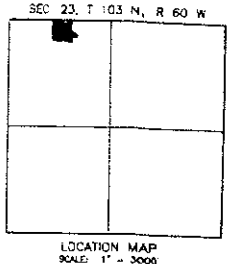
GRAPHIC SCALE



(IN FEET)
1 inch = 100 ft.

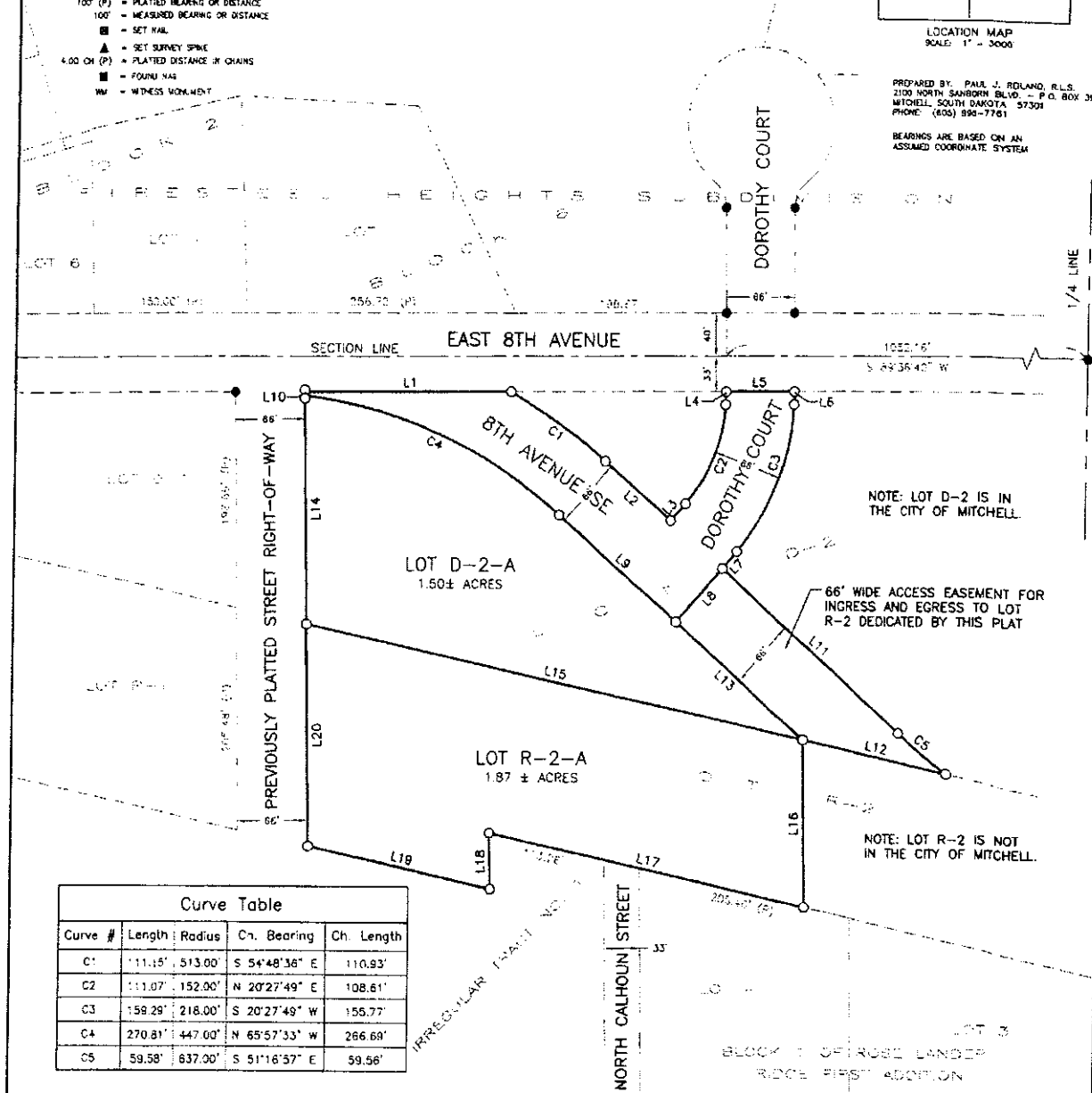


- LEGEND**
- - FOUND IRON MONUMENT
 - - SET 5/8" X 18" REBAR WITH PLASTIC CAP NO. 8702
 - 100' (P) - PLATTED BEARING OR DISTANCE
 - 100' - MEASURED BEARING OR DISTANCE
 - - SET NAIL
 - ▲ - SET SURVEY SPIKE
 - 4.00 CH (P) - PLATTED DISTANCE IN CHAINS
 - - FOUND NAIL
 - WM - WITNESS MONUMENT



PREPARED BY: PAUL J. REILAND, R.L.S.
2100 NORTH SANBORN BLVD. - P.O. BOX 398
MITCHELL, SOUTH DAKOTA 57301
PHONE: (605) 996-7761

BEARINGS ARE BASED ON AN ASSUMED COORDINATE SYSTEM



NOTE: LOT D-2 IS IN THE CITY OF MITCHELL.

66' WIDE ACCESS EASEMENT FOR INGRESS AND EGRESS TO LOT R-2 DEDICATED BY THIS PLAT

NOTE: LOT R-2 IS NOT IN THE CITY OF MITCHELL.

Curve Table				
Curve #	Length	Radius	Ch. Bearing	Ch. Length
C1	111.15'	513.00'	S 54°48'36" E	110.93'
C2	111.07'	152.00'	N 20°27'49" E	108.61'
C3	159.29'	218.00'	S 20°27'49" W	155.77'
C4	270.81'	447.00'	N 65°57'33" W	266.69'
C5	59.58'	637.00'	S 51°16'57" E	59.56'

Line Table		
Line #	Length	Direction
L1	196.60'	N 89°36'50" E
L2	81.56'	S 48°36'11" E
L3	20.73'	N 41°23'49" E
L4	1.88'	N 00°28'11" W
L5	66.00'	N 89°31'49" E

Line Table		
Line #	Length	Direction
L6	1.88'	S 00°28'11" E
L7	20.73'	S 41°23'49" W
L8	66.00'	S 41°23'49" W
L9	147.56'	N 48°36'11" W
L10	3.47'	N 00°52'04" W

Line Table		
Line #	Length	Direction
L11	228.46'	S 48°36'11" E
L12	141.95'	N 77°35'10" W
L13	163.78'	N 48°36'11" W
L14	210.23'	S 00°52'04" E
L15	485.27'	S 77°35'10" E

Line Table		
Line #	Length	Direction
L16	154.08'	S 00°52'04" E
L17	307.63'	N 77°34'59" W
L18	51.47'	S 01°19'45" E
L19	178.08'	N 77°38'03" W
L20	205.48'	N 00°52'04" W

A PLAT OF LOT D-2-A OF RISING SUN FIRST ADDITION, 8TH AVENUE SE AND DOROTHY COURT IN LOT D-2, AND LOT R-2-A OF RISING SUN FIRST ADDITION IN LOT R-2, ALL IN THE NW 1/4 OF SECTION 23, T 103 N, R 60 W OF THE 5th P.M., PORTIONS OF WHICH LIE IN THE CITY OF MITCHELL, DAVISON COUNTY, SOUTH DAKOTA.

SPN & Associates
Engineers, Planners and Surveyors
2100 North Sanborn Blvd. - P.O. Box 398 Mitchell, South Dakota 57301
Phone: (605) 996-7761 Fax: (605) 996-0015

