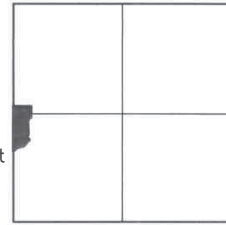




1 Inch = 100 Feet



LOCATION MAP
SCALE: 1" = 3000'

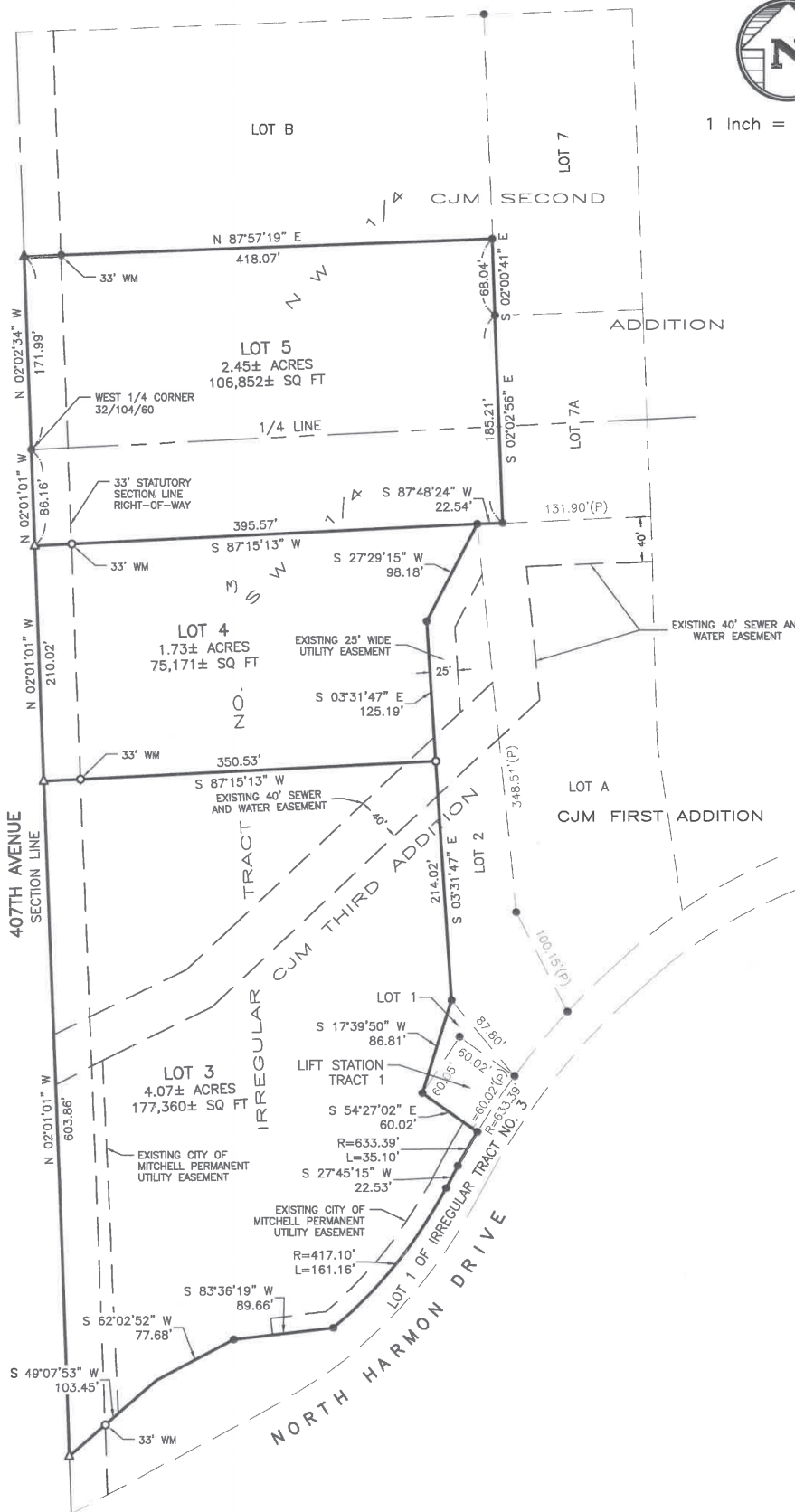
LEGEND

- = FOUND IRON MONUMENT
- = SET 5/8" x 18" REBAR WITH PLASTIC CAP NO. 13714
- 100' (P) = PLATTED BEARING OR DISTANCE
- 100' = MEASURED BEARING OR DISTANCE
- = SET NAIL
- △ = SET SURVEY SPIKE
- 4.00 CH (P) = PLATTED DISTANCE IN CHAINS
- = FOUND NAIL
- ◇ = SET 3/8" x 12" SPIKE W/WASHER JAW-13714
- WM = WITNESS MONUMENT

PREPARED BY: JEREMY A. WOLBRINK, R.L.S.
2100 NORTH SANBORN BLVD. - P.O. BOX 398
MITCHELL, SOUTH DAKOTA 57301
PHONE: (605) 996-7761

COORDINATE SYSTEM IS SOUTH DAKOTA SOUTH ZONE,
STATE PLANE - NORTH AMERICAN
DATUM 1983 - GEOID 12B.
GRID BEARINGS AND GROUND DISTANCES ARE SHOWN.

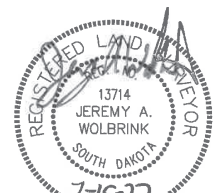
NOTE:
THIS SURVEY WAS PERFORMED WITHOUT
THE BENEFIT OF A TITLE REPORT OR TITLE
COMMITMENT. EASEMENTS OF RECORD WERE
NOT RESEARCHED AND ARE NOT SHOWN
UNLESS OTHERWISE NOTED.



A PLAT OF LOTS 3, 4 AND 5 OF CJM THIRD ADDITION, A SUBDIVISION OF THE NW 1/4 AND OF IRREGULAR TRACT NO. 3 IN THE SW 1/4 OF SECTION 32, T 104 N, R 60 W OF THE 5TH P.M., DAVISON COUNTY, SOUTH DAKOTA

SPN

& Associates
Engineers, Planners and Surveyors
2100 North Sanborn Blvd. - P.O. Box 398 Mitchell, South Dakota 57301
Phone: (605) 996-7761 Fax: (605) 996-0015



A PLAT OF LOTS 3, 4 AND 5 OF CJM THIRD ADDITION, A SUBDIVISION OF THE NW 1/4 AND OF IRREGULAR TRACT NO. 3 IN THE SW 1/4 OF SECTION 32, T 104 N, R 60 W OF THE 5TH P.M., DAVISON COUNTY, SOUTH DAKOTA

SURVEYOR'S CERTIFICATE

I, Jeremy A. Wolbrink, the undersigned, do hereby certify that I am a Registered Land Surveyor in and for the State of South Dakota. At the request of the owner as listed in the Owner's Certificate, Dedication and Agreement of Protection of Water, and under its direction for purposes indicated therein, I did on or prior to July 8, 2022, survey those parcels of land described as follows: LOTS 3, 4 AND 5 OF CJM THIRD ADDITION, A SUBDIVISION OF THE NW 1/4 AND OF IRREGULAR TRACT NO. 3 IN THE SW 1/4 OF SECTION 32, T 104 N, R 60 W OF THE 5TH P.M., DAVISON COUNTY, SOUTH DAKOTA.

In my professional opinion and to the best of my knowledge, information and belief, the within and foregoing plat is true and correct.
 Dated this 15TH day of July, 2022.


 Registered Land Surveyor #SD13714



OWNER'S CERTIFICATE, DEDICATION AND AGREEMENT OF PROTECTION OF WATER

KNOW ALL MEN BY THESE PRESENTS that Charles J. Mauszycki, Jr., the undersigned, hereby certifies that CJM Consulting, Inc., a South Dakota corporation, is the absolute and unqualified owner of all of the land included in the within and foregoing plat (proposed Lots 3, 4 and 5 of CJM Third Addition); the plat is of a parcel of ground located in THE NW 1/4 AND OF IRREGULAR TRACT NO. 3 IN THE SW 1/4 OF SECTION 32, T 104 N, R 60 W OF THE 5TH P.M., DAVISON COUNTY, SOUTH DAKOTA; that the plat has been made at the request of CJM Consulting, Inc., a South Dakota corporation, and under its direction for the purposes indicated therein; which said property as so surveyed and platted shall hereafter be known as LOTS 3, 4 AND 5 OF CJM THIRD ADDITION, A SUBDIVISION OF THE NW 1/4 AND OF IRREGULAR TRACT NO. 3 IN THE SW 1/4 OF SECTION 32, T 104 N, R 60 W OF THE 5TH P.M., DAVISON COUNTY, SOUTH DAKOTA, as shown by this plat; and CJM Consulting, Inc., a South Dakota corporation, hereby dedicates to the public, for public use forever as such, the streets and alleys, if any, as shown and marked on said plat; and that development of the land included within the boundaries of said Lots 3, 4 and 5 shall conform to all existing applicable zoning, subdivision, erosion, sediment control and drainage regulations and ordinances; further that there now exists 407th Avenue. Pursuant to SDCL 11-3-8.1 and 11-3-8.2 the developer of the property described within this plat shall be responsible for protecting any waters of the state located adjacent to or within such platted area from pollution from sewage from such subdivision and shall, in prosecution of such protections conform to and follow all regulations of the South Dakota Department of Agriculture and Natural Resources relating to the same. Additionally, the developer of the property described within this plat shall be liable for any pollution that occurs from failure to execute such protections or follow such regulations.

IN WITNESS WHEREOF, I have hereunto set my hand this _____ day of _____, 2022.

 Charles J. Mauszycki, Jr., Vice President of CJM Consulting, Inc.,
 a South Dakota corporation

CORPORATION ACKNOWLEDGMENT

STATE OF SOUTH DAKOTA)
)SS
 COUNTY OF DAVISON)

On this, the _____ day of _____, 2022, before me, _____, the undersigned officer, personally appeared Charles J. Mauszycki, Jr., of CJM Consulting, Inc., a South Dakota corporation, and that he, as such Vice President, being authorized so to do, executed the foregoing instrument for the purposes therein contained, by signing the name of the corporation by himself as Vice President.

IN WITNESS WHEREOF, I hereunto set my hand and official seal.

 Notary Public, South Dakota
 My Commission Expires: _____

A PLAT OF LOTS 3, 4 AND 5 OF CJM THIRD ADDITION, A SUBDIVISION OF THE NW 1/4 AND OF IRREGULAR TRACT NO. 3 IN THE SW 1/4 OF SECTION 32, T 104 N, R 60 W OF THE 5TH P.M., DAVISON COUNTY, SOUTH DAKOTA

RESOLUTION OF CITY PLANNING COMMISSION

WHEREAS, the plat of LOTS 3, 4 AND 5 OF CJM THIRD ADDITION, A SUBDIVISION OF THE NW 1/4 AND OF IRREGULAR TRACT NO. 3 IN THE SW 1/4 OF SECTION 32, T 104 N, R 60 W OF THE 5TH P.M., DAVISON COUNTY, SOUTH DAKOTA, prepared by Jeremy A. Wolbrink, duly licensed Land Surveyor in and for the State of South Dakota, heretofore filed in the office of the City Finance Officer of Mitchell, South Dakota, has been submitted to the City Planning Commission of the said City of Mitchell, South Dakota; and

WHEREAS, the City Planning Commission, in regular meeting assembled, had duly considered said plat and finds as a fact that said plat is in conformity and does not conflict with the Master Plan for the City of Mitchell, South Dakota, heretofore adopted by this Commission;

NOW THEREFORE, be it resolved by the City Planning Commission of Mitchell, South Dakota, that the plat of LOTS 3, 4 AND 5 OF CJM THIRD ADDITION, A SUBDIVISION OF THE NW 1/4 AND OF IRREGULAR TRACT NO. 3 IN THE SW 1/4 OF SECTION 32, T 104 N, R 60 W OF THE 5TH P.M., DAVISON COUNTY, SOUTH DAKOTA, prepared by Jeremy A. Wolbrink, a Land Surveyor, be and the same is hereby approved and its adoption by the City Council of the City of Mitchell, South Dakota, is hereby recommended.

The undersigned does hereby certify that the foregoing resolution was passed by the City Planning Commission of Mitchell, South Dakota, at a meeting thereof held on the _____ day of _____, 2022.

Chairperson/Vice Chairperson of the City Planning Commission: _____

RESOLUTION OF CITY COUNCIL

WHEREAS, it appears that the City Planning Commission of the City of Mitchell, South Dakota, did duly consider and did recommend the approval and adoption of the hereinafter described plat, at its meeting held on the _____ day of _____, 2022; and

WHEREAS, it appears from an examination of the plat of LOTS 3, 4 AND 5 OF CJM THIRD ADDITION, A SUBDIVISION OF THE NW 1/4 AND OF IRREGULAR TRACT NO. 3 IN THE SW 1/4 OF SECTION 32, T 104 N, R 60 W OF THE 5TH P.M., DAVISON COUNTY, SOUTH DAKOTA, as prepared by Jeremy A. Wolbrink, a duly licensed Land Surveyor in and for the State of South Dakota, that said plat is in accordance with the system of streets and alleys set forth in the Master Plan adopted by the City Planning Commission of the City of Mitchell, South Dakota, and that such plat has been prepared according to law;

THEREFORE, be it resolved by the City Council of Mitchell, South Dakota, that the plat of LOTS 3, 4 AND 5 OF CJM THIRD ADDITION, A SUBDIVISION OF THE NW 1/4 AND OF IRREGULAR TRACT NO. 3 IN THE SW 1/4 OF SECTION 32, T 104 N, R 60 W OF THE 5TH P.M., DAVISON COUNTY, SOUTH DAKOTA, prepared by Jeremy A. Wolbrink, be and the same is hereby approved and the description set forth therein and the accompanying surveyor's certificate shall prevail.

The undersigned does hereby certify that the foregoing resolution was passed by the City of Mitchell, South Dakota, at a meeting held on the _____ day of _____, 2022.

Finance Officer/Deputy Finance Officer: _____

RESOLUTION OF COUNTY PLANNING COMMISSION

WHEREAS, the plat of LOTS 3, 4 AND 5 OF CJM THIRD ADDITION, A SUBDIVISION OF THE NW 1/4 AND OF IRREGULAR TRACT NO. 3 IN THE SW 1/4 OF SECTION 32, T 104 N, R 60 W OF THE 5TH P.M., DAVISON COUNTY, SOUTH DAKOTA, prepared by Jeremy A. Wolbrink, duly licensed Land Surveyor in and for the State of South Dakota, heretofore filed in the office of the County Auditor of Davison County, South Dakota, has been submitted to the County Planning Commission of the said County of Davison, South Dakota; and

WHEREAS, the County Planning Commission, in regular meeting assembled, had duly considered said plat and finds as a fact that said plat is in conformity and does not conflict with the Master Plan for the County of Davison, South Dakota, heretofore adopted by this Commission;

NOW THEREFORE, be it resolved by the County Planning Commission of Davison County, South Dakota, that the plat of LOTS 3, 4 AND 5 OF CJM THIRD ADDITION, A SUBDIVISION OF THE NW 1/4 AND OF IRREGULAR TRACT NO. 3 IN THE SW 1/4 OF SECTION 32, T 104 N, R 60 W OF THE 5TH P.M., DAVISON COUNTY, SOUTH DAKOTA, prepared by Jeremy A. Wolbrink, a Land Surveyor, be and the same is hereby approved and its adoption by the Board of Commissioners of the County of Davison, South Dakota, is hereby recommended.

The undersigned hereby certifies that the foregoing resolution was passed by the County Planning Commission of Davison County, South Dakota, at a meeting thereof held on the _____ day of _____, 2022.

Chairperson/Vice-Chairperson of Davison County Planning Commission

RESOLUTION BY BOARD OF COUNTY COMMISSIONERS

Be it resolved by the Board of County Commissioners of Davison County, South Dakota, that the plat of LOTS 3, 4 AND 5 OF CJM THIRD ADDITION, A SUBDIVISION OF THE NW 1/4 AND OF IRREGULAR TRACT NO. 3 IN THE SW 1/4 OF SECTION 32, T 104 N, R 60 W OF THE 5TH P.M., DAVISON COUNTY, SOUTH DAKOTA, which has been submitted for examination pursuant to law, is hereby approved and the County Auditor is hereby authorized and directed to endorse on such plat a copy of this Resolution and certify the same.

Chairperson/Vice-Chairperson, Board of County Commissioners of Davison County



& Associates
Engineers, Planners and Surveyors
2100 North Sanborn Blvd. - P.O. Box 398 Mitchell, South Dakota 57301
Phone: (605) 996-7761 Fax: (605) 996-0015

