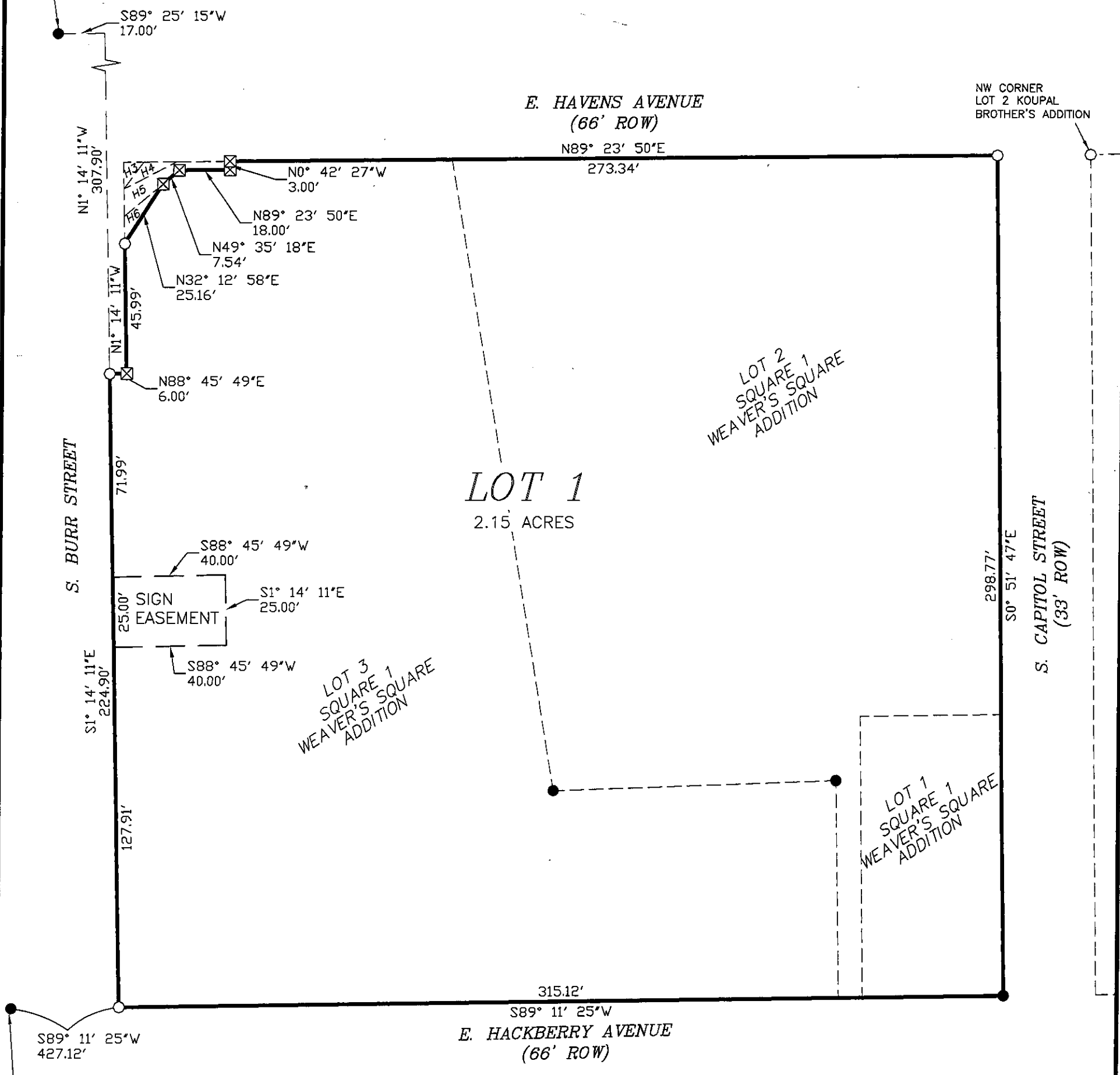
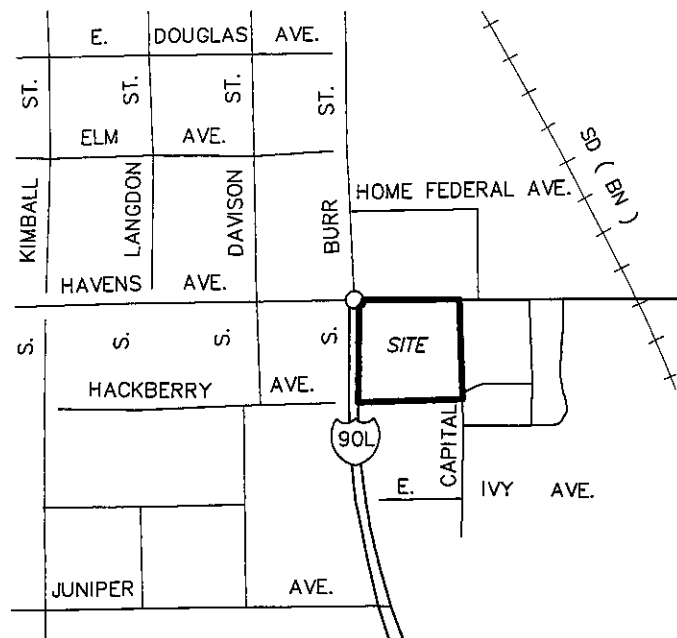


LOT 1 OF PLAIN'S ADDITION,
 IN SECTION 23, TOWNSHIP 103 NORTH, RANGE 60 WEST
 TO THE CITY OF MITCHELL, DAVISON COUNTY, SOUTH DAKOTA.

PROPERTY CORNER 83' SOUTH OF THE
 NORTHWEST CORNER OF LOT 1 OF
 IVERSON'S SECOND ADDITION



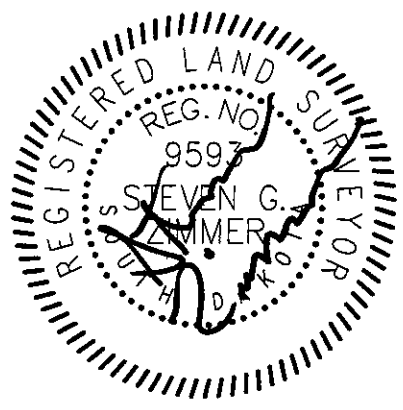
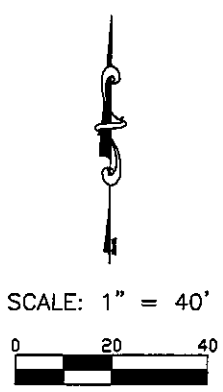
SW CORNER OF
 BLOCK 2, WEAVERS
 SQUARE ADDITION



LEGEND:

- FOUND MONUMENT
- SET 5/8" REBAR W/CAP #9593
- ⊠ NAIL IN ASPHALT

NOTES:
 BASIS OF BEARING IS UTM 14 NORTH, GROUND DISTANCE.



Brosz
 2309 W. 50th Street,
 Sioux Falls, S.D. 57105
 Ph. (605) 334-4882
 Fax (605) 334-5745

DATE: 12/7/2021	
CHECKED BY: SGZ	DRAWN BY: CHS
PROJ. NO.: 2104275	PAGE NO.: 1 OF 3

LOT 1 OF PLAIN'S ADDITION,

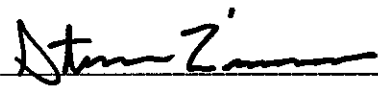
IN SECTION 23, TOWNSHIP 103 NORTH, RANGE 60 WEST
TO THE CITY OF MITCHELL, DAVISON COUNTY, SOUTH DAKOTA.

SURVEYOR'S CERTIFICATE

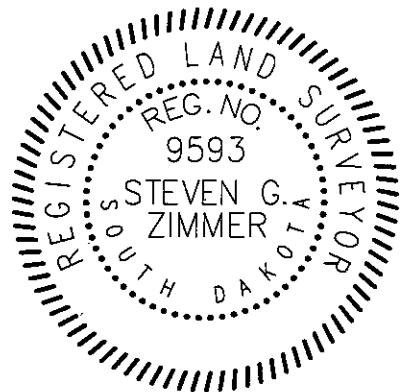
I, STEVEN G. ZIMMER, A REGISTERED LAND SURVEYOR OF THE STATE OF SOUTH DAKOTA, DO HEREBY STATE THAT I DID ON OR BEFORE NOVEMBER 5TH, 2021, SURVEY LOTS 1, 2, AND 3, SQUARE 1, WEAVER'S SQUARE ADDITION TO THE CITY OF MITCHELL, DAVISON COUNTY, SOUTH DAKOTA AND PLATTED THE SAME INTO LOT 1 OF PLAIN'S ADDITION IN SECTION 23, TOWNSHIP 103 NORTH, RANGE 60 WEST OF THE FIFTH PRINCIPAL MERIDIAN TO THE CITY OF MITCHELL, DAVISON COUNTY, SOUTH DAKOTA, CONTAINING 2.15 ACRES.

DATED THIS 7TH DAY OF DECEMBER, 2021.

REGISTERED LAND SURVEYOR


STEVEN G. ZIMMER

NO. 9593



OWNER'S CERTIFICATE

I, JILL LUQUE, EXECUTIVE VICE PRESIDENT OF PLAINS COMMERCE BANK, DO HEREBY CERTIFY THAT WE ARE THE OWNERS OF ALL LAND INCLUDED IN THE PLAT AND THAT SAID PLAT HAS BEEN MADE AT OUR REQUEST AND IN ACCORDANCE WITH OUR INSTRUCTIONS FOR THE PURPOSES OF LOCATING, MARKING, PLATTING AND/OR TRANSFER, AND THAT THE DEVELOPMENT OF THIS LAND SHALL CONFORM TO ALL EXISTING APPLICABLE ZONING, SUBDIVISION, DRAINAGE, AND EROSION AND SEDIMENT CONTROL REGULATIONS.

WE HEREBY DEDICATE TO THE PUBLIC FOR PUBLIC USE FOREVER, THE STREETS, ROADS, ALLEYS, PARKS AND PUBLIC GROUNDS, IF ANY, AS SHOWN ON SAID PLAT, INCLUDING ALL SEWERS, CULVERTS, BRIDGES, WATER DISTRIBUTION LINES, SIDEWALKS AND OTHER IMPROVEMENTS ON OR UNDER THE STREETS, ROADS, ALLEYS, PARKS AND PUBLIC GROUNDS, WHETHER SUCH IMPROVEMENTS ARE SHOWN OR NOT. WE ALSO HEREBY GRANT EASEMENTS TO RUN WITH THE LAND FOR WATER, DRAINAGE, SEWER, GAS, ELECTRIC, TELEPHONE OR OTHER PUBLIC UTILITY LINES OR SERVICES UNDER, ON OR OVER THOSE STRIPS OF LAND DESIGNATED HEREON AS EASEMENTS.

I, JILL LUQUE, EXECUTIVE VICE PRESIDENT OF PLAINS COMMERCE BANK, DO HEREBY CERTIFY THAT THIS REPLAT WILL NOT PLACE ANY EXISTING LOT OR BUILDING IN VIOLATION OF ANY APPLICABLE ORDINANCE, CODE, REGULATION, OR LAW INCLUDING BUT NOT LIMITED TO ZONING, BUILDING, SUBDIVISION, AND FLOOD PREVENTION.

I FURTHER CERTIFY THAT THIS PLATTING OF SAID DESCRIBED LOT 1 OF PLAIN'S ADDITION IN SECTION 23, TOWNSHIP 103 NORTH, RANGE 60 WEST OF THE FIFTH PRINCIPAL MERIDIAN TO THE CITY OF MITCHELL, DAVISON COUNTY, SOUTH DAKOTA DOES HEREBY VACATE THE FOLLOWING PLATTING:

LOT 1, SQUARE 1, WEAVER'S SQUARE ADDITION TO THE TOWN (NOW CITY) OF MITCHELL, SOUTH DAKOTA ON FILE AT THE REGISTER OF DEEDS OFFICE IN BOOK 3, PAGE 7 OF PLATS, AND LOT 2 IN SQUARE 1 OF WEAVER'S SQUARES ADDITION TO THE CITY OF MITCHELL, DAVISON COUNTY, SOUTH DAKOTA ON FILE AT THE REGISTER OF DEEDS OFFICE IN BOOK 13, PAGE 19 OF PLATS AND LOT 3 IN SQUARE 1 OF WEAVER'S SQUARES ADDITION TO THE CITY OF MITCHELL, DAVISON COUNTY, SOUTH DAKOTA ON FILE AT THE REGISTER OF DEEDS OFFICE IN BOOK 13, PAGE 26, SAID PLATS, HEREBY VACATED, BEING SITUATED WITHIN DESCRIBED LOT 1 OF PLAIN'S ADDITION TO THE CITY OF MITCHELL, DAVISON COUNTY, SOUTH DAKOTA.


JILL LUQUE
EXECUTIVE VICE PRESIDENT, PLAINS COMMERCE BANK

STATE OF SOUTH DAKOTA)

)SS

COUNTY OF DAVISON)

ON THIS _____ DAY OF _____, 2021, BEFORE ME, THE UNDERSIGNED OFFICER, PERSONALLY APPEARED JILL LUQUE WHO ACKNOWLEDGED HERSELF TO BE THE EXECUTIVE VICE PRESIDENT, RESPECTIVELY, OF PLAINS COMMERCE BANK, AND THAT SHE AS SUCH EXECUTIVE VICE PRESIDENT BEING AUTHORIZED SO TO DO, EXECUTED THE FORGOING INSTRUMENT FOR THE PURPOSES THEREIN CONTAINED, BY SIGNING THE NAME OF THE CORPORATION BY HERSELF AS EXECUTIVE VICE PRESIDENT, RESPECTIVELY.

IN WITNESS WHEREOF, I HAVE HEREUNTO SET MY HAND AND OFFICIAL SEAL THIS _____ DAY OF _____, 2021.

MY COMMISSION EXPIRES: _____

NOTARY PUBLIC
STATE OF SOUTH DAKOTA

**LOT 1 OF PLAIN'S ADDITION,
IN SECTION 23, TOWNSHIP 103 NORTH, RANGE 60 WEST
TO THE CITY OF MITCHELL, DAVISON COUNTY, SOUTH DAKOTA.**

RESOLUTION OF CITY PLANNING COMMISSION

WHEREAS, THE PLAT OF LOT 1 OF PLAIN'S ADDITION IN SECTION 23, TOWNSHIP 103 NORTH, RANGE 60 WEST OF THE FIFTH PRINCIPAL MERIDIAN TO THE CITY OF MITCHELL, DAVISON COUNTY, SOUTH DAKOTA, PREPARED BY STEVEN G. ZIMMER, DULY LICENSED LAND SURVEYOR IN AND FOR THE STATE OF SOUTH DAKOTA, HERETOFORE FILED IN THE OFFICE OF THE CITY FINANCE OFFICER OF MITCHELL, SOUTH DAKOTA, AND

WHEREAS, THE CITY PLANNING COMMISSION, IN REGULAR MEETING ASSEMBLED, HAD DULY CONSIDERED SAID PLAT AND FINDS AS A FACT THAT SAID PLAT IS IN CONFORMITY AND DOES NOT CONFLICT WITH THE MASTER PLAN FOR THE CITY OF MITCHELL, SOUTH DAKOTA, HERETOFORE ADOPTED BY THIS COMMISSION;

NOW THEREFORE, BE IT RESOLVED BY THE CITY PLANNING COMMISSION OF MITCHELL, SOUTH DAKOTA, THAT THE LOT 1 OF PLAIN'S ADDITION IN SECTION 23, TOWNSHIP 103 NORTH, RANGE 60 WEST OF THE FIFTH PRINCIPAL MERIDIAN TO THE CITY OF MITCHELL, DAVISON COUNTY, SOUTH DAKOTA, PREPARED BY STEVEN G. ZIMMER, A LAND SURVEYOR, BE AND THE SAME IS HEREBY APPROVED AND ITS ADOPTION BY THE CITY COUNCIL OF THE CITY OF MITCHELL, SOUTH DAKOTA IS HEREBY RECOMMENDED.

THE UNDERSIGNED DOES HEREBY CERTIFY THAT THE FOREGOING RESOLUTION WAS PASSED BY THE CITY PLANNING COMMISSION OF MITCHELL, SOUTH DAKOTA, AT A MEETING HELD ON THE

____ DAY OF _____, 2021

CHAIRPERSON/VICE CHAIRPERSON OF THE CITY OF MITCHELL
PLANNING COMMISSION

CITY FINANCE OFFICER'S CERTIFICATE

WHEREAS, IT APPEARS THAT THE CITY PLANNING COMMISSION OF THE CITY OF MITCHELL, SOUTH DAKOTA DID DULY CONSIDER AND DID RECOMMEND THE APPROVAL AND ADOPTION OF THE HEREINAFTER DESCRIBED PLAT, AT IS MEETING HELD ON THE ____ DAY OF _____, 2021;

AND

WHEREAS, IT APPEARS FROM AN EXAMINATION OF THE PLAT OF LOT 1 OF PLAIN'S ADDITION IN SECTION 23, TOWNSHIP 103 NORTH, RANGE 60 WEST OF THE FIFTH PRINCIPAL MERIDIAN TO THE CITY OF MITCHELL, DAVISON COUNTY, SOUTH DAKOTA, AS PREPARED BY STEVEN G. ZIMMER, A DULY LICENSED LAND SURVEYOR IN AND FOR THE STATE OF SOUTH DAKOTA, THAT SAID PLAT IS IN ACCORDANCE WITH THE SYSTEM OF STREETS AND ALLEYS SET FORTH IN THE MASTER PLAN ADOPTED BY THE CITY PLANNING COMMISSION OF THE CITY OF MITCHELL, SOUTH DAKOTA, AND THAT SUCH PLAT HAS BEEN PREPARED ACCORDING TO LAW;

THEREFORE, BE IT RESOLVED BY THE CITY COUNCIL OF MITCHELL, SOUTH DAKOTA, THAT THE PLAT OF LOT 1 OF PLAIN'S ADDITION TO THE CITY OF MITCHELL, DAVISON COUNTY, SOUTH DAKOTA, PREPARED BY STEVEN G. ZIMMER, BE AND THE SAME IS HEREBY APPROVED AND THE DESCRIPTION SET FORTH THEREIN AND THE ACCOMPANYING SURVEYOR'S CERTIFICATE SHALL PREVAIL. THE UNDERSIGNED DOES HEREBY CERTIFY THAT THE FOREGOING RESOLUTION WAS PASSED BY THE CITY OF MITCHELL, SOUTH DAKOTA, AT A MEETING HELD ON THE

____ DAY OF _____, 2021.

CHAIRPERSON/VICE CHAIRPERSON OF THE DAVISON
COUNTY PLANNING COMMISSION

RESOLUTION BY BOARD OF COUNTY COMMISSIONERS

BE IT RESOLVED BY THE BOARD OF COUNTY COMMISSIONERS OF DAVISON COUNTY, SOUTH DAKOTA, THAT THE PLAT OF LOT 1 OF PLAIN'S ADDITION TO THE CITY OF MITCHELL, DAVISON COUNTY, SOUTH DAKOTA, WHICH HAS BEEN SUBMITTED FOR EXAMINATION PURSUANT TO LAW, IS HEREBY APPROVED AND THE COUNTY AUDITOR IS HEREBY AUTHORIZED AND DIRECTED TO ENDORSE ON SUCH PLAT A COPY OF THIS RESOLUTION AN CERTIFY THE SAME.

DATED THIS ____ DAY OF _____, 2021.

CHAIRPERSON/VICE CHAIRPERSON OF THE DAVISON
COUNTY PLANNING COMMISSION

AUDITOR'S CERTIFICATE

THE UNDERSIGNED DOES HEREBY CERTIFY THAT THE ABOVE RESOLUTION WAS ADOPTED BY THE BOARD OF COMMISSIONER OF DAVISON COUNTY, SOUTH DAKOTA, AT A REGULAR MEETING HELD ON THE ____ DAY OF _____, 2021.

AUDITOR/DEPUTY AUDITOR OF DAVISON COUNTY

CERTIFICATE OF HIGHWAY AUTHORITY

THE LOCATION OF THE EXISTING APPROACHES ARE HEREBY APPROVED. ANY CHANGE IN THE LOCATION OF THE EXISTING APPROACHES SHALL REQUIRE ADDITIONAL APPROVAL.

HIGHWAY AUTHORITY

TITLE: _____

DATE: _____

COUNTY TREASURER'S CERTIFICATE

I, THE TREASURER OF DAVISON COUNTY, SOUTH DAKOTA, DO HEREBY CERTIFY THAT ALL TAXES WHICH ARE LIENS UPON ANY LAND SHOWN IN THE ABOVE PLAT AS SHOWN BY THE RECORDS OF MY OFFICE, HAVE BEEN PAID IN FULL.

THIS _____ DAY OF _____, 20____.

TREASURER
DAVISON COUNTY, SOUTH DAKOTA

COUNTY DIRECTOR OF EQUALIZATION CERTIFICATE

I, THE DIRECTOR OF EQUALIZATION OF DAVISON COUNTY, SOUTH DAKOTA, DO HEREBY CERTIFY THAT A COPY OF THE ABOVE PLAT HAS BEEN FILED IN MY OFFICE.

THIS _____ DAY OF _____, 20____.

DIRECTOR OF EQUALIZATION
DAVISON COUNTY, SOUTH DAKOTA

COUNTY REGISTER OF DEEDS

FILED FOR RECORD THIS ____ DAY OF _____, 20____, AT

____ O'CLOCK, ____ M., AND RECORDED IN BOOK _____ OF

PLATS ON PAGE _____.

REGISTER OF DEEDS
DAVISON COUNTY, SOUTH DAKOTA