



GRAPHIC SCALE

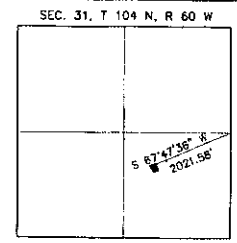


(IN FEET)
1 inch = 60 ft.

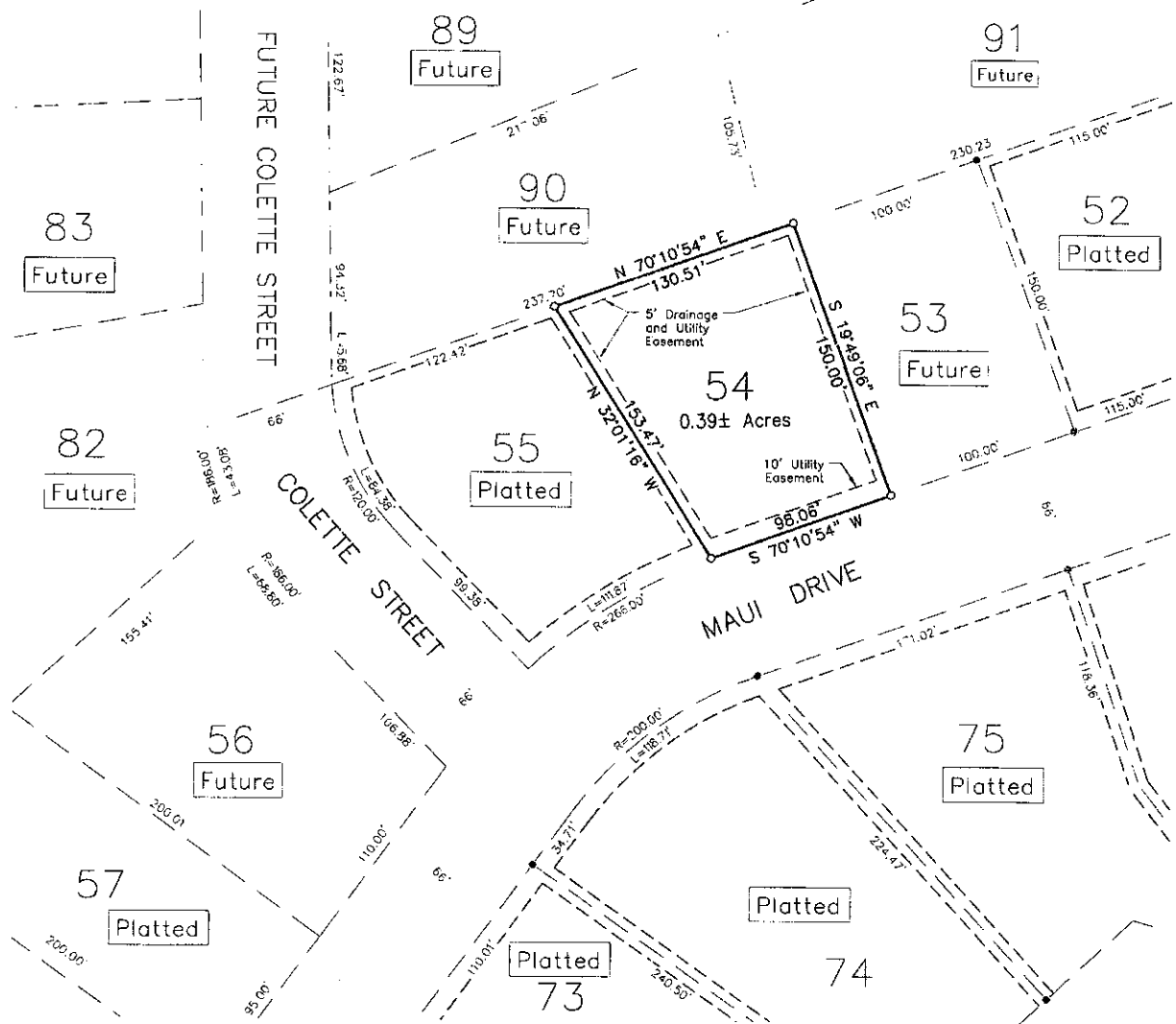
Easements within Lot 54 Dedicated by this Plat:

Rear and Sides = 5' Drainage and Utility Easement
Front Along Maui Drive = 10' Utility Easement

- LEGEND**
- = FOUND IRON MONUMENT
 - = SET 5/8" x 18" REBAR WITH PLASTIC CAP NO. 6702
 - 100' (P) = PLATTED BEARING OR DISTANCE
 - 100' = MEASURED BEARING OR DISTANCE
 - ⊠ = SET NAIL
 - ▲ = SET SURVEY SPIKE
 - 4.00 CH (P) = PLATTED DISTANCE IN CHAINS
 - = FOUND NAIL
 - ◇ = SET 3/8" x 12" SPIKE W/WASHER P.R.-6702
 - WSJ = WITNESS MONUMENT
- PREPARED BY: PAUL J. REILAND, R.L.S.
2100 NORTH SANBORN BLVD. - P.O. BOX 398
MITCHELL, SOUTH DAKOTA 57301
PHONE: (605) 996-7761
- BEARINGS ARE BASED ON AN ASSUMED COORDINATE SYSTEM USING GPS GRID BEARINGS/GROUND DISTANCES



LOCATION MAP
SCALE: 1" = 3000'



A PLAT OF LOT 54 OF MAUI FARMS SECOND ADDITION, A SUBDIVISION OF THE SE 1/4 OF SECTION 31, T 104 N, R 60 W OF THE 5TH P.M., CITY OF MITCHELL, DAVISON COUNTY, SOUTH DAKOTA

SURVEYOR'S CERTIFICATE

I, Paul J. Reiland, the undersigned, do hereby certify that I am a Registered Land Surveyor in and for the State of South Dakota. At the request of Maui Farms Inc., a South Dakota corporation, as owner, and under its direction for purposes indicated therein, I did on or prior to April 12, 2021, survey those parcels of land described as follows: LOT 54 OF MAUI FARMS SECOND ADDITION, A SUBDIVISION OF THE SE 1/4 OF SECTION 31, T 104 N, R 60 W OF THE 5TH P.M., CITY OF MITCHELL, DAVISON COUNTY, SOUTH DAKOTA.

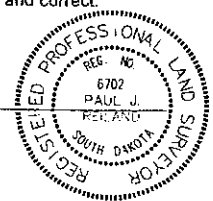
In my professional opinion and to the best of my knowledge, information and belief, the within and foregoing plat is true and correct.

Dated this _____ day of _____, 2021

Registered Land Surveyor #SD6702



& Associates
Engineers, Planners and Surveyors
2100 North Sanborn Blvd. - P.O. Box 398 Mitchell, South Dakota 57301
Phone: (605) 996-7761 Fax: (605) 996-0015



A PLAT OF LOT 54 OF MAUI FARMS SECOND ADDITION, A SUBDIVISION OF THE SE 1/4 OF SECTION 31, T 104 N, R 60 W OF THE 5TH P.M., CITY OF MITCHELL, DAVISON COUNTY, SOUTH DAKOTA

OWNER'S CERTIFICATE, DEDICATION AND AGREEMENT OF PROTECTION OF WATER

KNOW ALL MEN BY THESE PRESENTS that I, the undersigned, hereby certify that Maui Farms Inc., a South Dakota corporation, is the absolute and unqualified owner of all of the land included in the within and foregoing plat; the plat is of a parcel of ground located in THE SE 1/4 OF SECTION 31, T 104 N, R 60 W OF THE 5TH P.M., CITY OF MITCHELL, DAVISON COUNTY, SOUTH DAKOTA; that the plat has been made at the request of Maui Farms Inc., a South Dakota corporation, and under its direction for the purposes indicated therein; which said property as so surveyed and platted shall hereafter be known as LOT 54 OF MAUI FARMS SECOND ADDITION, A SUBDIVISION OF THE SE 1/4 OF SECTION 31, T 104 N, R 60 W OF THE 5TH P.M., CITY OF MITCHELL, DAVISON COUNTY, SOUTH DAKOTA, as shown by this plat; and Maui Farms Inc., a South Dakota corporation, hereby dedicates to the public, for public use forever as such, the streets and alleys, if any, as shown and marked on said plat; and that development of the land included within the boundaries of said Lot 54 shall conform to all existing applicable zoning, subdivision, erosion, sediment control and drainage regulations and ordinances; further that there now exists Maui Drive. Pursuant to SDCL 11-3-8.1 and 11-3-8.2 the developer of the property described within this plat shall be responsible for protecting any waters of the state located adjacent to or within such platted area from pollution from sewage from such subdivision and shall, in prosecution of such protections conform to and follow all regulations of the South Dakota Department of Environment and Natural Resources relating to the same. Additionally, the developer of the property described within this plat shall be liable for any pollution that occurs from failure to execute such protections or follow such regulations, exception being those lots in subdivisions that show documentation that wastewater drainage shall be connected to a municipal system.

IN WITNESS WHEREOF, I have hereunto set my hand this _____ day of _____, 2021.

Charles J. Mauszycki, Jr., Vice President of Maui Farms, Inc., a South Dakota corporation

CORPORATION ACKNOWLEDGMENT

STATE OF SOUTH DAKOTA)
)SS
COUNTY OF DAVISON)

On this, the _____ day of _____, 2021, before me, _____, the undersigned officer, personally appeared Charles J. Mauszycki, Jr., of Maui Farms Inc., a South Dakota corporation, and that he, as such Vice President, being authorized so to do, executed the foregoing instrument for the purposes therein contained, by signing the name of the corporation by himself as Vice President.

IN WITNESS WHEREOF, I hereunto set my hand and official seal.

Notary Public, South Dakota
My Commission Expires:

RESOLUTION OF CITY PLANNING COMMISSION

WHEREAS, the plat of LOT 54 OF MAUI FARMS SECOND ADDITION, A SUBDIVISION OF THE SE 1/4 OF SECTION 31, T 104 N, R 60 W OF THE 5TH P.M., CITY OF MITCHELL, DAVISON COUNTY, SOUTH DAKOTA, prepared by Paul J. Reiland, duly licensed Land Surveyor in and for the State of South Dakota, heretofore filed in the office of the City Finance Officer of Mitchell, South Dakota, has been submitted to the City Planning Commission of the said City of Mitchell, South Dakota; and

WHEREAS, the City Planning Commission, in regular meeting assembled, had duly considered said plat and finds as a fact that said plat is in conformity and does not conflict with the Master Plan for the City of Mitchell, South Dakota, heretofore adopted by this Commission;

NOW THEREFORE, be it resolved by the City Planning Commission of Mitchell, South Dakota, that the plat of LOT 54 OF MAUI FARMS SECOND ADDITION, A SUBDIVISION OF THE SE 1/4 OF SECTION 31, T 104 N, R 60 W OF THE 5TH P.M., CITY OF MITCHELL, DAVISON COUNTY, SOUTH DAKOTA, prepared by Paul J. Reiland, a Land Surveyor, be and the same is hereby approved and its adoption by the City Council of the City of Mitchell, South Dakota, is hereby recommended.

The undersigned hereby certifies that the foregoing resolution was passed by the City Planning Commission of Mitchell, South Dakota, at a meeting thereof held on the _____ day of _____, 2021.

Chairperson/Vice Chairperson of the City Planning Commission

SPN & ASSOCIATES
ENGINEERS, PLANNERS AND SURVEYORS
REGISTERED PROFESSIONAL LAND SURVEYOR
RECORDED DOCUMENT



& Associates
Engineers, Planners and Surveyors
2100 North Sanborn Blvd. - P.O. Box 398 Mitchell, South Dakota 57301
Phone: (605) 996-7761 Fax: (605) 996-0015

