



1 Inch = 100 Feet

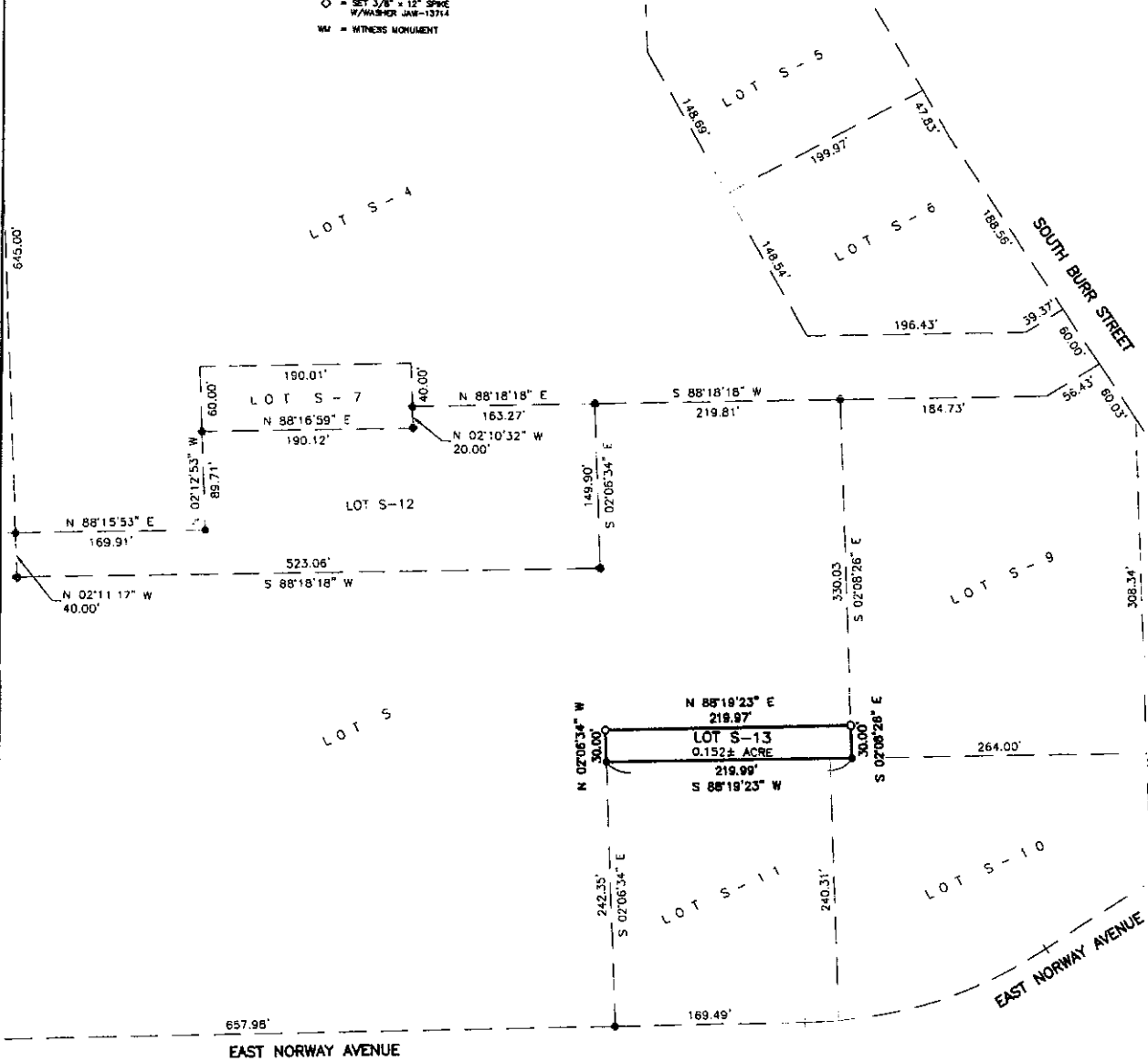
**LEGEND**

- = FOUND IRON MONUMENT
- = SET 3/8" x 18" REBAR WITH PLASTIC CAP NO. 13714
- 100' (P) = PLATTED BEARING OR DISTANCE
- 100' = MEASURED BEARING OR DISTANCE
- = SET NAIL
- △ = SET SURVEY SPIKE
- 4.00 CH (P) = PLATTED DISTANCE IN CHAINS
- = FOUND NAIL
- ◇ = SET 3/8" x 12" SPIKE W/WASHER JAW-13714
- WM = WITNESS MONUMENT

PREPARED BY: JEREMY A. WOLBRINK, R.L.S.  
2100 NORTH SANBORN BLVD. - P.O. BOX 398  
MITCHELL, SOUTH DAKOTA 57301  
PHONE: (605) 996-7761

COORDINATE SYSTEM IS SOUTH DAKOTA SOUTH ZONE, STATE PLANE - NORTH AMERICAN DATUM 1983 - GEOID 12B.

NOTE:  
THIS SURVEY WAS PERFORMED WITHOUT THE BENEFIT OF A TITLE REPORT OR TITLE COMMITMENT. EASEMENTS OF RECORD WERE NOT RESEARCHED AND ARE NOT SHOWN UNLESS OTHERWISE NOTED.



A PLAT OF LOT S-13, A SUBDIVISION OF THE REPLAT OF LOT S IN THE NW 1/4 OF SECTION 27, T 103 N, R 60 W OF THE 5TH P.M., CITY OF MITCHELL, DAVISON COUNTY, SOUTH DAKOTA

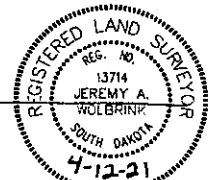
**SURVEYOR'S CERTIFICATE**

I, Jeremy A. Wolbrink, the undersigned, do hereby certify that I am a Registered Land Surveyor in and for the State of South Dakota. At the request of First Dakota National Bank, a South Dakota banking corporation, as owner, and under its direction for purposes indicated therein, I did on or prior to April 7, 2021, survey those parcels of land described as follows: LOT S-13, A SUBDIVISION OF THE REPLAT OF LOT S IN THE NW 1/4 OF SECTION 27, T 103 N, R 60 W OF THE 5TH P.M., CITY OF MITCHELL, DAVISON COUNTY, SOUTH DAKOTA.

In my professional opinion and to the best of my knowledge, information and belief, the within and foregoing plat is true and correct.

Dated this 12TH day of APRIL, 2021.

*Jeremy A. Wolbrink*  
Registered Land Surveyor #SD13714



**SPN**

**& Associates**  
Engineers, Planners and Surveyors  
2100 North Sanborn Blvd. - P.O. Box 398 Mitchell, South Dakota 57301  
Phone: (605) 996-7761 Fax: (605) 996-0015

# A PLAT OF LOT S-13, A SUBDIVISION OF THE REPLAT OF LOT S IN THE NW 1/4 OF SECTION 27, T 103 N, R 60 W OF THE 5TH P.M., CITY OF MITCHELL, DAVISON COUNTY, SOUTH DAKOTA

## RESOLUTION OF CITY COUNCIL

WHEREAS, it appears that the City Planning Commission of the City of Mitchell, South Dakota, did duly consider and did recommend the approval and adoption of the hereinafter described plat, at its meeting held on the \_\_\_\_\_ day of \_\_\_\_\_, 2021; and

WHEREAS, it appears from an examination of the plat of LOT S-13, A SUBDIVISION OF THE REPLAT OF LOT S IN THE NW 1/4 OF SECTION 27, T 103 N, R 60 W OF THE 5TH P.M., CITY OF MITCHELL, DAVISON COUNTY, SOUTH DAKOTA, as prepared by Jeremy A. Wolbrink, a duly licensed Land Surveyor in and for the State of South Dakota, that said plat is in accordance with the system of streets and alleys set forth in the Master Plan adopted by the City Planning Commission of the City of Mitchell, South Dakota, and that such plat has been prepared according to law;

THEREFORE, be it resolved by the City Council of Mitchell, South Dakota, that the plat of LOT S-13, A SUBDIVISION OF THE REPLAT OF LOT S IN THE NW 1/4 OF SECTION 27, T 103 N, R 60 W OF THE 5TH P.M., CITY OF MITCHELL, DAVISON COUNTY, SOUTH DAKOTA, prepared by Jeremy A. Wolbrink, be and the same is hereby approved and the description set forth therein and the accompanying surveyor's certificate shall prevail.

The undersigned does hereby certify that the foregoing resolution was passed by the City of Mitchell, South Dakota, at a meeting held on the \_\_\_\_\_ day of \_\_\_\_\_, 2021

\_\_\_\_\_  
Finance Officer/Deputy Finance Officer of the City of Mitchell

## CERTIFICATE OF COUNTY TREASURER

The undersigned does hereby certify that all taxes which would, if not paid, be liens upon any of the land included in the within and foregoing plat, as shown by the records of this office, have been fully paid.

\_\_\_\_\_  
Treasurer/Deputy Treasurer of Davison County

\_\_\_\_\_  
Date

## DIRECTOR OF EQUALIZATION

The undersigned does hereby certify that a copy of the plat of LOT S-13, A SUBDIVISION OF THE REPLAT OF LOT S IN THE NW 1/4 OF SECTION 27, T 103 N, R 60 W OF THE 5TH P.M., CITY OF MITCHELL, DAVISON COUNTY, SOUTH DAKOTA, has been received by me and is filed in this office.

\_\_\_\_\_  
Director of Equalization/Deputy Director of Equalization of Davison County

\_\_\_\_\_  
Date

## REGISTER OF DEEDS

STATE OF SOUTH DAKOTA)  
                                  )SS  
COUNTY OF DAVISON)

FILED for record this \_\_\_\_\_ day of \_\_\_\_\_, 2021, at \_\_\_\_\_, and recorded in Book \_\_\_\_\_ of Plats on Page(s) \_\_\_\_\_ therein and recorded on Microfilm Number \_\_\_\_\_.

\_\_\_\_\_  
Register of Deeds, Davison County

By \_\_\_\_\_  
Deputy



**& Associates**  
Engineers, Planners and Surveyors  
2100 North Sanborn Blvd. - P.O. Box 398 Mitchell, South Dakota 57301  
Phone: (605) 996-7761 Fax: (605) 996-0015

