

1 Inch = 200 Feet

NOTE: 5/8" x 1/8" REBAR WITH PLASTIC CAP NO. 6702 WILL BE SET AT ALL BLOCK CORNERS AND PROPERTY LINE BENDS.

NOTE: ALL LOTS SHOWN ARE PROPOSED

LEGEND

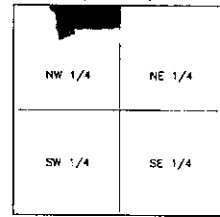
- = FOUND IRON MONUMENT
- = SET 5/8" x 1/8" REBAR WITH PLASTIC CAP NO. 6702
- ▲ = FOUND SURVEY SPIKE
- 100' (P) = PLATTED BEARING OR DISTANCE
- 100' = MEASURED BEARING OR DISTANCE
- WM = WITNESS MONUMENT

PREPARED BY: PAUL J. REILAND, R.L.S.
 2100 NORTH SANBORN BLVD. - P.O. BOX 398
 MITCHELL, SOUTH DAKOTA 57301
 PHONE: (605) 996-7761

COORDINATE SYSTEM IS SOUTH DAKOTA SOUTH ZONE, STATE PLANE
 NORTH AMERICAN DATUM 1983 - GEOID 128
 GRID BEARINGS AND GRID DISTANCES ARE SHOWN.

NOTE:
 THIS SURVEY WAS PERFORMED WITHOUT THE BENEFIT OF A TITLE
 REPORT OR TITLE COMMITMENT. EASEMENTS OF RECORD WERE NOT
 RESEARCHED AND ARE NOT SHOWN UNLESS OTHERWISE NOTED.

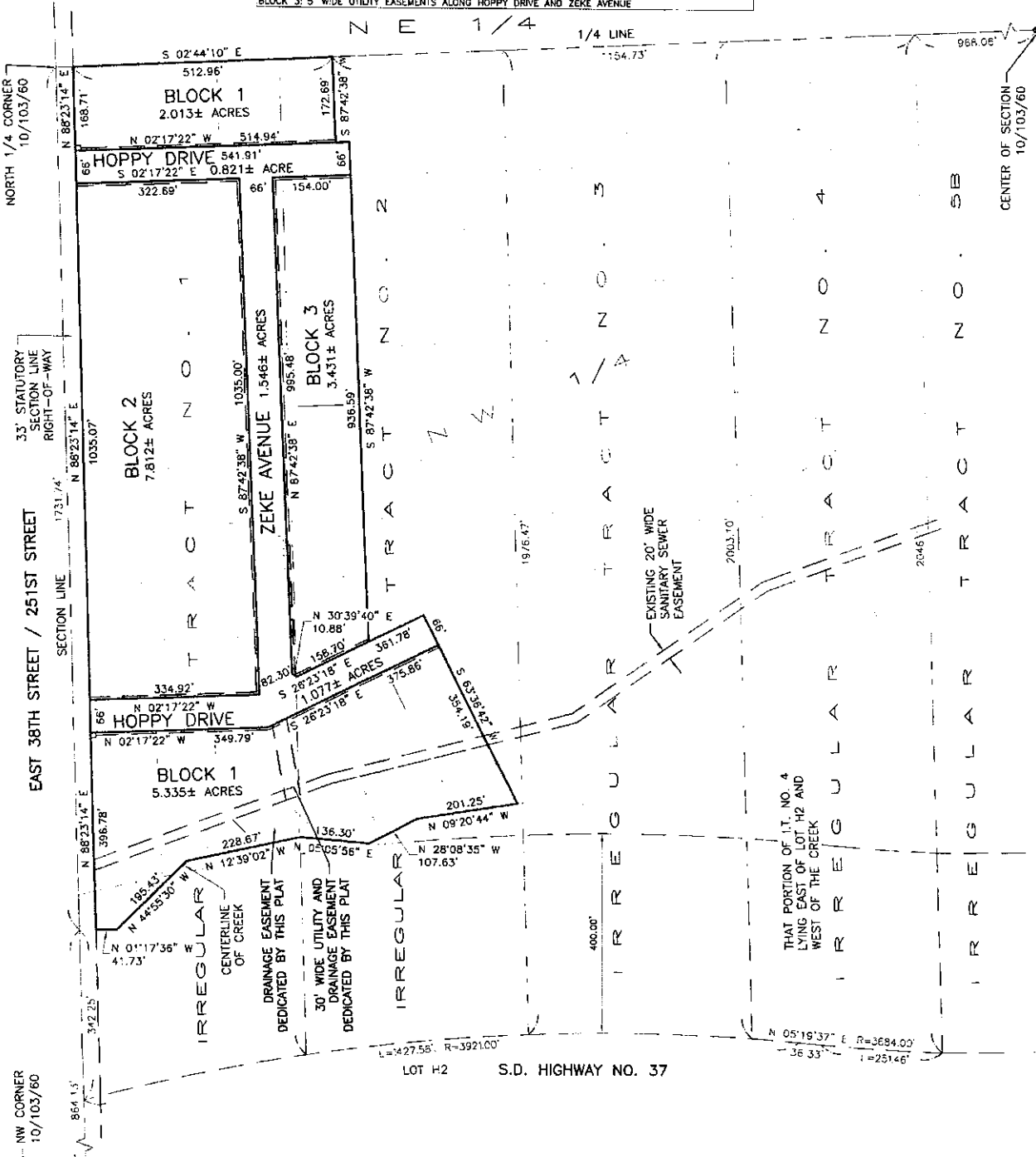
SEC. 10, T 103 N, R 60 W



LOCATION MAP
 SCALE: 1" = 3000'

EASEMENTS DEDICATED BY THIS PLAT:

- BLOCK 1: 5' WIDE UTILITY EASEMENTS ALONG HOPPY DRIVE
 30" WIDE UTILITY AND DRAINAGE EASEMENT
 VARIABLE WIDTH DRAINAGE EASEMENT FROM CREEK TO EXISTING SEWER EASEMENT
 10'x10' UTILITY EASEMENTS AT THE INTERSECTIONS OF HOPPY DRIVE AND EAST 38TH STREET
- BLOCK 2: 5' WIDE UTILITY EASEMENTS ALONG HOPPY DRIVE AND ZEKE AVENUE
- BLOCK 3: 5' WIDE UTILITY EASEMENTS ALONG HOPPY DRIVE AND ZEKE AVENUE



A PLAT OF BLOCKS 1, 2 AND 3, HOPPY DRIVE AND ZEKE AVENUE OF LAKERIDGE ADDITION, A SUBDIVISION OF IRREGULAR TRACTS NOS. 1 AND 2 IN THE NW 1/4 OF SECTION 10, T 103 N, R 60 W OF THE 5TH P.M., CITY OF MITCHELL, DAVISON COUNTY, SOUTH DAKOTA

SPN & Associates
 Engineers, Planners and Surveyors
 2100 North Sanborn Blvd. - P.O. Box 398 Mitchell, South Dakota 57301
 Phone: (605) 996-7761 Fax: (605) 996-0015



A PLAT OF BLOCKS 1, 2 AND 3, HOPPY DRIVE AND ZEKE AVENUE OF LAKERIDGE ADDITION, A SUBDIVISION OF IRREGULAR TRACTS NOS. 1 AND 2 IN THE NW 1/4 OF SECTION 10, T 103 N, R 60 W OF THE 5TH P.M., CITY OF MITCHELL, DAVISON COUNTY, SOUTH DAKOTA

RESOLUTION OF CITY PLANNING COMMISSION

WHEREAS, the plat of BLOCKS 1, 2 AND 3, HOPPY DRIVE AND ZEKE AVENUE OF LAKERIDGE ADDITION, A SUBDIVISION OF IRREGULAR TRACTS NOS. 1 AND 2 IN THE NW 1/4 OF SECTION 10, T 103 N, R 60 W OF THE 5TH P.M., CITY OF MITCHELL, DAVISON COUNTY, SOUTH DAKOTA, prepared by Paul J. Reiland, duly licensed Land Surveyor in and for the State of South Dakota, heretofore filed in the office of the City Finance Officer of Mitchell, South Dakota, has been submitted to the City Planning Commission of the said City of Mitchell, South Dakota; and WHEREAS, the City Planning Commission, in regular meeting assembled, had duly considered said plat and finds as a fact that said plat is in conformity and does not conflict with the Master Plan for the City of Mitchell, South Dakota, heretofore adopted by this Commission; NOW THEREFORE, be it resolved by the City Planning Commission of Mitchell, South Dakota, that the plat of BLOCKS 1, 2 AND 3, HOPPY DRIVE AND ZEKE AVENUE OF LAKERIDGE ADDITION, A SUBDIVISION OF IRREGULAR TRACTS NOS. 1 AND 2 IN THE NW 1/4 OF SECTION 10, T 103 N, R 60 W OF THE 5TH P.M., CITY OF MITCHELL, DAVISON COUNTY, SOUTH DAKOTA, prepared by Paul J. Reiland, a Land Surveyor, be and the same is hereby approved and its adoption by the City Council of the City of Mitchell, South Dakota, is hereby recommended. The undersigned does hereby certify that the foregoing resolution was passed by the City Planning Commission of Mitchell, South Dakota, at a meeting thereof held on the _____ day of _____, 2021.

Chairperson/Vice-Chairperson of Planning Commission, City of Mitchell, South Dakota

RESOLUTION OF CITY COUNCIL

WHEREAS, it appears that the City Planning Commission of the City of Mitchell, South Dakota, did duly consider and did recommend the approval and adoption of the hereinafter described plat, at its meeting held on the _____ day of _____, 2021, and WHEREAS, it appears from an examination of the plat of BLOCKS 1, 2 AND 3, HOPPY DRIVE AND ZEKE AVENUE OF LAKERIDGE ADDITION, A SUBDIVISION OF IRREGULAR TRACTS NOS. 1 AND 2 IN THE NW 1/4 OF SECTION 10, T 103 N, R 60 W OF THE 5TH P.M., CITY OF MITCHELL, DAVISON COUNTY, SOUTH DAKOTA, as prepared by Paul J. Reiland, a duly licensed Land Surveyor in and for the State of South Dakota, that said plat is in accordance with the system of streets and alleys set forth in the Master Plan adopted by the City Planning Commission of the City of Mitchell, South Dakota, and that such plat has been prepared according to law; THEREFORE, be it resolved by the City Council of Mitchell, South Dakota, that the plat of BLOCKS 1, 2 AND 3, HOPPY DRIVE AND ZEKE AVENUE OF LAKERIDGE ADDITION, A SUBDIVISION OF IRREGULAR TRACTS NOS. 1 AND 2 IN THE NW 1/4 OF SECTION 10, T 103 N, R 60 W OF THE 5TH P.M., CITY OF MITCHELL, DAVISON COUNTY, SOUTH DAKOTA, prepared by Paul J. Reiland, be and the same is hereby approved and the description set forth therein and the accompanying surveyor's certificate shall prevail. The undersigned hereby certifies that the foregoing resolution was passed by the City of Mitchell, South Dakota, at a meeting held on the _____ day of _____, 2021.

Finance Officer/Deputy Finance Officer, City of Mitchell

CERTIFICATE OF COUNTY TREASURER

The undersigned hereby certifies that all taxes which would, if not paid, be liens upon any of the land included in the within and foregoing plat, as shown by the records of my office, have been fully paid.

Treasurer/Deputy Treasurer, Davison County Date

DIRECTOR OF EQUALIZATION

The undersigned hereby certifies that a copy of the plat of BLOCKS 1, 2 AND 3, HOPPY DRIVE AND ZEKE AVENUE OF LAKERIDGE ADDITION, A SUBDIVISION OF IRREGULAR TRACTS NOS. 1 AND 2 IN THE NW 1/4 OF SECTION 10, T 103 N, R 60 W OF THE 5TH P.M., CITY OF MITCHELL, DAVISON COUNTY, SOUTH DAKOTA, has been received by me and is filed in my office.

Director of Equalization/Deputy Director of Equalization, Davison County Date

REGISTER OF DEEDS

STATE OF SOUTH DAKOTA))SS COUNTY OF DAVISON)

FILED for record this _____ day of _____, 2021, at _____, and recorded in Book _____ of Plats on Page _____ therein and recorded on Microfilm Number _____.

Register of Deeds, Davison County By _____ Deputy



& Associates Engineers, Planners and Surveyors 2100 North Sanborn Blvd. - P.O. Box 398 Mitchell, South Dakota 57301 Phone: (605) 996-7761 Fax: (605) 996-0015

