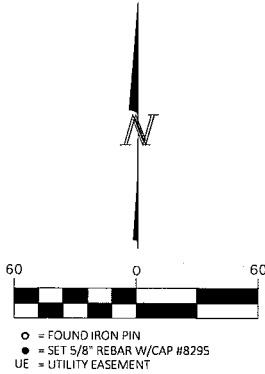
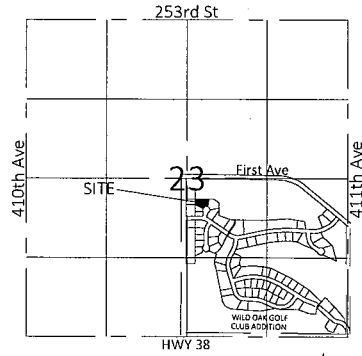


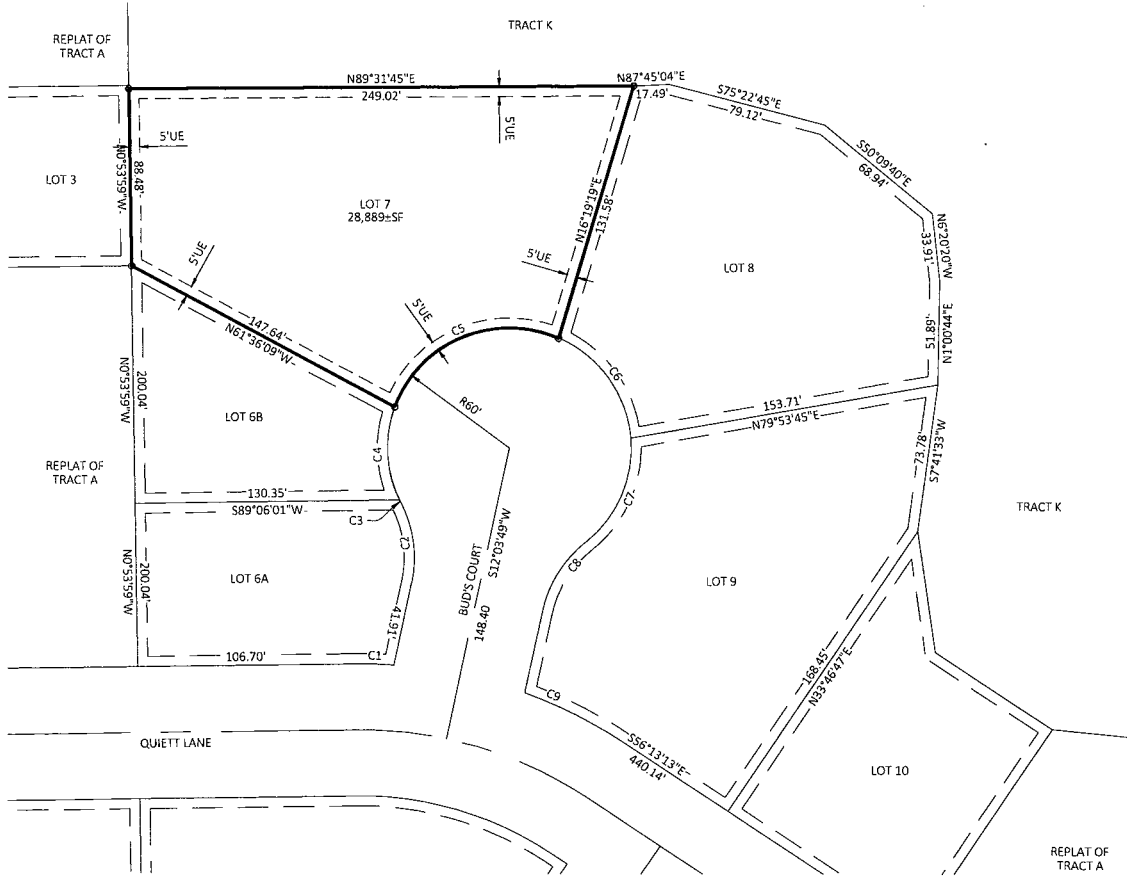
PLAT OF
**LOT 7 IN THE REPLAT OF TRACT A,
 WILD OAK GOLF CLUB ADDITION**
 TO THE CITY OF MITCHELL, DAVISON COUNTY, SOUTH DAKOTA



Curve Table					
Curve	Length	Radius	Delta	Chord Distance	Chord Bearing
C1	19.61'	233.00'	4°49'16"	19.60'	N88°29'21"W
C2	41.04'	60.00'	39°11'42"	40.25'	N7°32'02"W
C3	1.61'	60.00'	1°32'01"	1.61'	S26°21'53"E
C4	47.61'	60.00'	45°27'56"	46.37'	S2°51'55"E
C5	98.50'	60.00'	94°03'46"	87.81'	S66°53'56"W
C6	64.07'	60.00'	61°11'05"	61.07'	N35°28'38"W
C7	58.79'	60.00'	56°08'36"	56.47'	N23°11'12"E
C8	41.04'	60.00'	39°11'42"	40.25'	S31°39'39"W
C9	55.20'	233.00'	13°34'26"	55.07'	N63°00'26"W



VICINITY MAP
 SEC 23, T103N, R60W



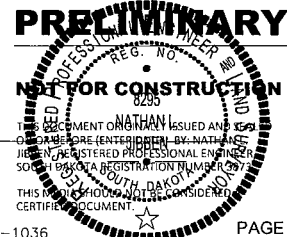
SURVEYOR'S CERTIFICATE

I, NATHAN L. JIBBEN, OF JSA CONSULTING ENGINEERS/LAND SURVEYORS, INC., A REGISTERED LAND SURVEYOR IN THE STATE OF SOUTH DAKOTA, DO HEREBY CERTIFY THAT I DID, ON OR BEFORE MARCH 14, 2021, SURVEY A PORTION OF THE REPLAT OF TRACT A, WILD OAK GOLF CLUB ADDITION, IN THE SE1/4 OF SECTION 23, T103N, R60W OF THE 5TH P.M., DAVISON COUNTY, SOUTH DAKOTA AS SHOWN ON THE ABOVE PLAT. THAT PORTION OF LAND SHALL HEREAFTER BE KNOWN AND DESCRIBED AS LOT 7 IN THE REPLAT OF TRACT A, WILD OAK GOLF CLUB ADDITION TO THE CITY OF MITCHELL, DAVISON COUNTY, SOUTH DAKOTA, CONTAINING 0.66 ACRES.

I FURTHER CERTIFY THAT TO THE BEST OF MY KNOWLEDGE THE ABOVE PLAT CORRECTLY REPRESENTS THE SAME, IS TRUE AND CORRECT AND THAT IT WAS MADE UNDER MY DIRECT SUPERVISION.

DATED THIS _____ DAY OF _____, 202__.

NATHAN L. JIBBEN, RLS 8295



PLAT OF
LOT 7 IN THE REPLAT OF TRACT A,
WILD OAK GOLF CLUB ADDITION
TO THE CITY OF MITCHELL, DAVISON COUNTY, SOUTH DAKOTA

RESOLUTION OF CITY PLANNING COMMISSION

WHEREAS, THE PLAT OF LOT 7 IN THE REPLAT OF TRACT A, WILD OAK GOLF CLUB ADDITION TO THE CITY OF MITCHELL, DAVISON COUNTY, SOUTH DAKOTA, HERETOFORE FILED IN THE OFFICE OF THE CITY FINANCE OFFICER OF MITCHELL, SOUTH DAKOTA, HAS BEEN SUBMITTED TO THE CITY PLANNING COMMISSION OF THE SAID CITY OF MITCHELL, SOUTH DAKOTA; AND

WHEREAS, THE CITY PLANNING COMMISSION, IN REGULAR MEETING ASSEMBLED, HAD DULY CONSIDERED SAID PLAT AND FINDS AS A FACT THAT SAID PLAT IS IN CONFORMITY AND DOES NOT CONFLICT WITH THE MASTER PLAN FOR THE CITY OF MITCHELL, SOUTH DAKOTA, HERETOFORE ADOPTED BY THIS COMMISSION;

NOW THEREFORE, BE IT RESOLVED BY THE CITY PLANNING COMMISSION OF MITCHELL, SOUTH DAKOTA, THAT THE PLAT OF LOT 7 IN THE REPLAT OF TRACT A, WILD OAK GOLF CLUB ADDITION TO THE CITY OF MITCHELL, DAVISON COUNTY, SOUTH DAKOTA, BE AND THE SAME IS HEREBY APPROVED AND ITS ADOPTION BY THE CITY COUNCIL OF THE CITY OF MITCHELL, SOUTH DAKOTA, IS HEREBY RECOMMENDED.

I, _____, CHAIRMAN OF THE CITY PLANNING COMMISSION FOR THE CITY OF MITCHELL, SOUTH DAKOTA, DO HEREBY CERTIFY THAT THE FOREGOING RESOLUTION WAS PASSED BY THE CITY PLANNING COMMISSION OF MITCHELL, SOUTH DAKOTA, AT A MEETING THEREOF HELD ON THE

_____ DAY OF _____, 20_____.

CHAIRMAN CITY PLANNING COMMISSION

RESOLUTION OF CITY COUNCIL

WHEREAS, IT APPEARS THAT THE CITY PLANNING COMMISSION OF THE CITY OF MITCHELL, SOUTH DAKOTA, DID DULY CONSIDER AND DID RECOMMEND THE

APPROVAL AND ADOPTION OF THE HERINAFTER DESCRIBED PLAT, AT ITS MEETING HELD ON THE _____ DAY OF _____, 20_____; AND

WHEREAS, IT APPEARS FROM AN EXAMINATION OF THE PLAT OF LOT 7 IN THE REPLAT OF TRACT A, WILD OAK GOLF CLUB ADDITION TO THE CITY OF MITCHELL, DAVISON COUNTY, SOUTH DAKOTA, THAT SAID PLAT IS IN ACCORDANCE WITH THE SYSTEM OF STREETS AND ALLEYS SET FORTH IN THE MASTER PLAN ADOPTED BY THE CITY PLANNING COMMISSION OF THE CITY OF MITCHELL, SOUTH DAKOTA, AND THAT SUCH PLAT HAS BEEN PREPARED ACCORDING TO LAW;

THEREFORE, BE IT RESOLVED BY THE CITY COUNCIL OF MITCHELL, SOUTH DAKOTA, THAT THE PLAT OF LOT 7 IN THE REPLAT OF TRACT A, WILD OAK GOLF CLUB ADDITION TO THE CITY OF MITCHELL, DAVISON COUNTY, SOUTH DAKOTA BE AND THE SAME IS APPROVED AND THE DESCRIPTION SET FORTH THEREIN AND THE ACCOMPANYING SURVEYOR'S CERTIFICATE SHALL PREVAIL.

I, _____, FINANCE OFFICER OF THE CITY OF MITCHELL, SOUTH DAKOTA, HEREBY CERTIFY THAT THE FOREGOING RESOLUTION WAS PASSED BY THE CITY OF MITCHELL, SOUTH DAKOTA, AT A MEETING THEREOF HELD ON THE _____ DAY OF _____, 20_____.

FINANCE OFFICER

COUNTY TREASURER'S CERTIFICATE

I, TREASURER/DEPUTY TREASURER OF DAVISON COUNTY, SOUTH DAKOTA, HEREBY CERTIFY THAT ALL TAXES WHICH ARE LIENS UPON ANY LAND SHOWN IN THE ABOVE PLAT AS SHOWN BY THE RECORDS OF MY OFFICE, HAVE BEEN PAID IN FULL.

DATE

TREASURER/DEPUTY TREASURER, DAVISON COUNTY, SD

DIRECTOR OF EQUALIZATION

I, DIRECTOR OF EQUALIZATION OF DAVISON COUNTY, SOUTH DAKOTA, DO HEREBY CERTIFY THAT A COPY OF THE ABOVE PLAT HAS BEEN FILED AT MY OFFICE.

DIRECTOR OF EQUALIZATION/DEPUTY DIRECTOR OF EQUALIZATION, DAVISON COUNTY, SD

REGISTER OF DEEDS

FILED FOR RECORD THIS _____ DAY OF _____, 20_____, AT _____ O'CLOCK, _____ M., AND RECORDED IN BOOK

_____ OF PLATS ON PAGE _____ THEREIN AND RECORDED ON MICROFILM NUMBER _____.

REGISTER OF DEEDS, DAVISON COUNTY, SD