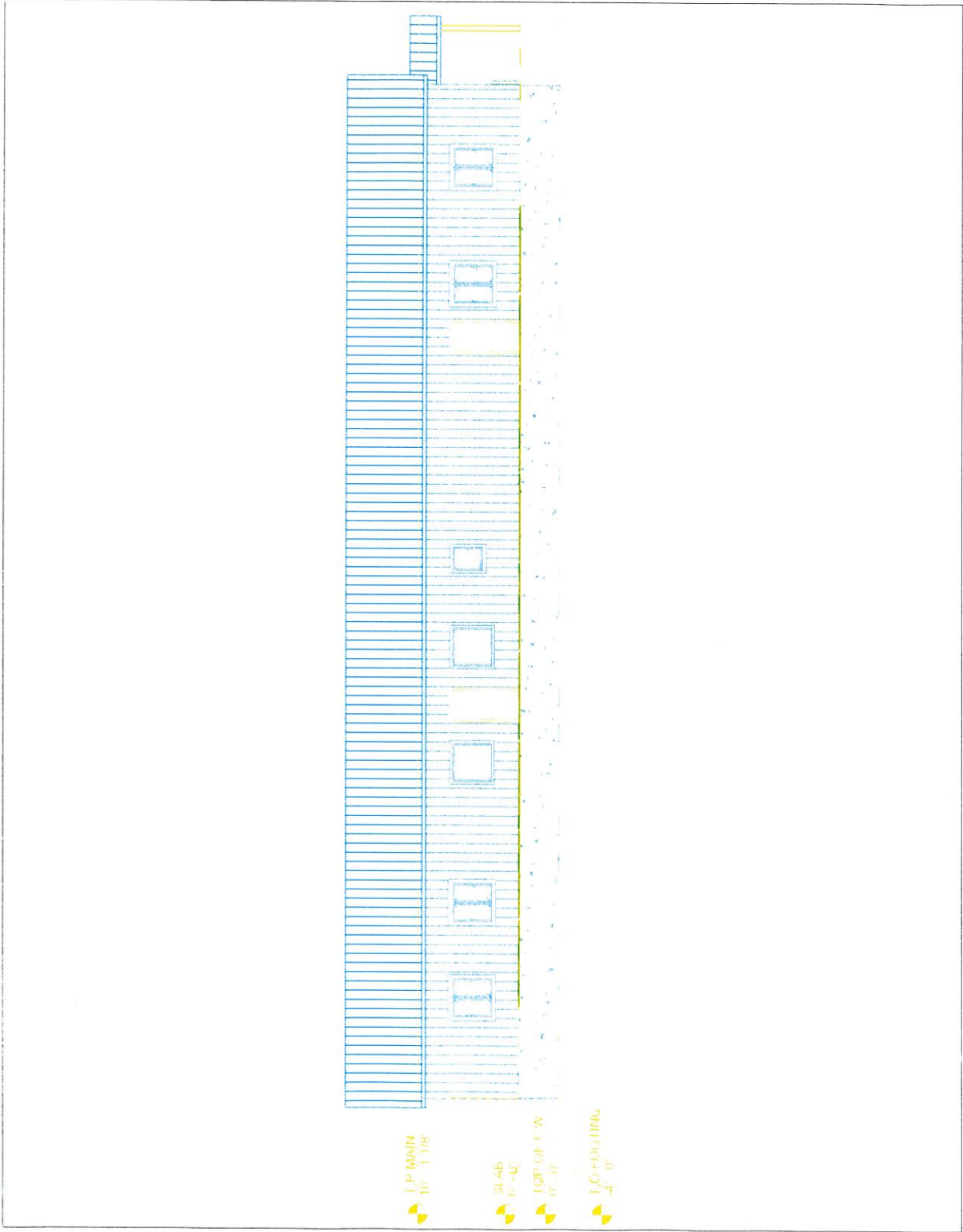


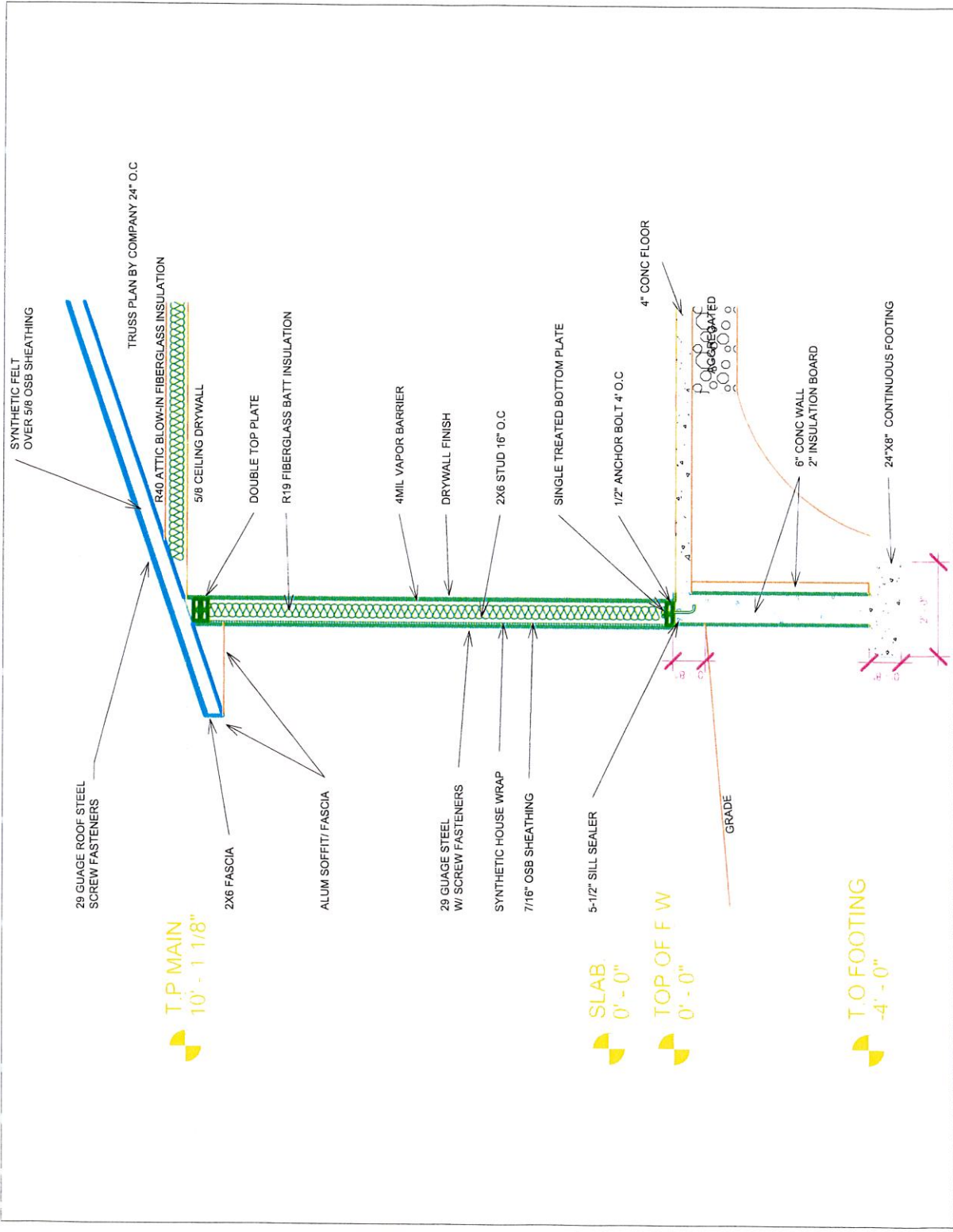
T.P. MAIN
10' - 1 1/8"

SLAB
0' - 0"

TOP OF F.W.
0' - 0"

T.O. FOOTING
-4' - 0"





SYNTHETIC FELT
OVER 5/8 OSB SHEATHING

29 GAUGE ROOF STEEL
SCREW FASTENERS

TRUSS PLAN BY COMPANY 24" O.C

T.P MAIN
10' - 1 1/8"

2X6 FASCIA

DOUBLE TOP PLATE

R19 FIBERGLASS BATT INSULATION

ALUM SOFFIT/ FASCIA

4MIL VAPOR BARRIER

DRYWALL FINISH

29 GAUGE STEEL
W/ SCREW FASTENERS

2X6 STUD 16" O.C

SYNTHETIC HOUSE WRAP
7/16" OSB SHEATHING

SINGLE TREATED BOTTOM PLATE

5-1/2" SILL SEALER

1/2" ANCHOR BOLT 4" O.C

SLAB
0' - 0"

TOP OF F W
0' - 0"

4" CONC FLOOR

GRADE

REGREAVED

6" CONC WALL
2" INSULATION BOARD

24"X8" CONTINUOUS FOOTING

T.O FOOTING
-4' - 0"

2' - 0"